

# Yosemite

Spring 1989  
Volume 51  
Number 2

A Journal for  
Members of the  
Yosemite Association

## 1988 Annual Review

*Editor's note: The Yosemite Association is proud to announce that it has just published a biography of Carl Sharsmith entitled Mountain Sage and authored by Elizabeth O'Neill. The following is an excerpt from the book which tells the life story of one of Yosemite's most beloved and respected naturalists.*

**Summer, 1885**, in Tuolumne Meadows. And Carl is in his tent, the same tent he has been occupying every summer for years on end.

God knows, it isn't much of a tent. On the table, a red oilcloth and a small reading light with flexible neck and metal shade. A stack of books supports an open volume he has been reading — maybe poetry, maybe geology.

There are a sink, refrigerator, wood stove and woodpile, a few pans hanging on nails. Unpainted shelves hold his scanty larder: canned soup and beans, bags of potatoes and onions, plastic jars of flour, sugar, coffee, a can of tobacco, a sack of homemade soap. His easy chair, a recycled frame with worn plastic-covered cushions.

In the back room stand two iron cots with bare mattresses, a few boxes, a bar across one corner for hanging clothes, an unfinished pine dresser with brush and comb on top. The brush belonged to his mother. On his bed a sleeping bag is laid open for airing. And thereby hangs a tale.

This year, driven to it by sternest necessity, he has a new sleeping bag. He patched and mended the old one religiously for thirty years and, when he could mend no more, he bought a new one for thirty dollars in an army surplus store. He has neatly stitched in a sheet liner, then a second layer under the head, and made an invisible patch over a blemish by the zipper. The feathers from the old bag were retrieved for pillows.

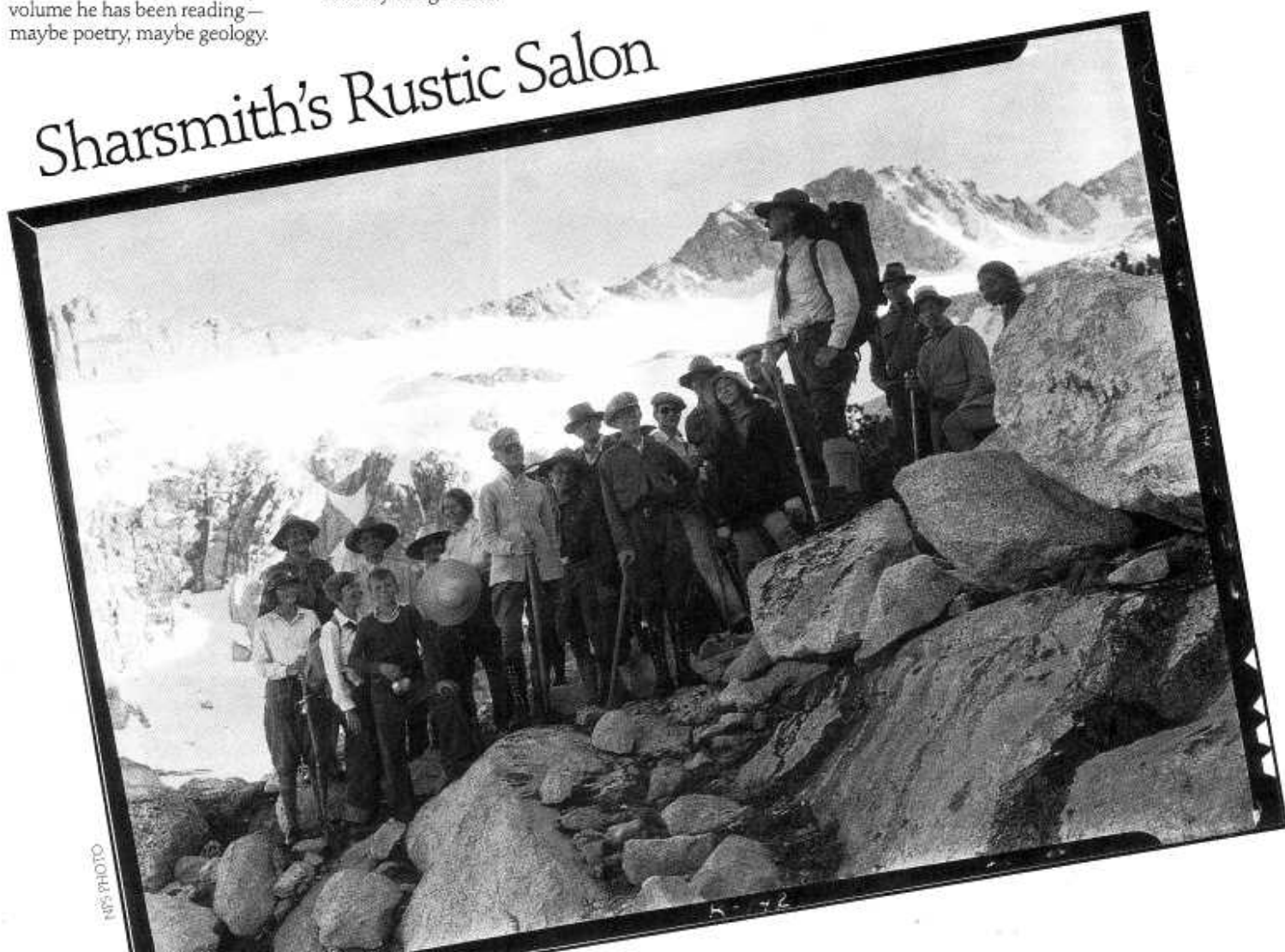
No, it's not much of a tent, but it's Sharsmith's tent, and in it he holds his rustic salon. He has shrunk a little now and is slightly stooped. His parchment face is

pinched into a long nose and pointed chin, and surmounted by ungreayed brown hair chopped short in a self-administered crew-cut. He wears much-mended ranger pants, a voluminous grey wool shirt, and tennis shoes with leather patches. In his oversized, capable hands, an old pipe.

And because it's Sharsmith's tent, it becomes a crossroads. Hundreds pass through in a season, thousands in a decade. Any casual visitor is dazzled by the variety, and soon joins the multitude for coffee and talk.

One evening Nelson Nies, a healthy white-haired old Trailfin-

## Sharsmith's Rustic Salon



NIES PHOTO

## A Little History

der, arrives with his wife, all agog to tell Carl about a recent trip to Patagonia, "but there weren't any pine trees."

Carl is mildly indignant. "Of course there weren't any pine trees! They hardly appear in the southern hemisphere. Why, the farthest south they go is Borneo."

Tim Palmer, river-runner, backpacker on the Pacific Crest Trail, and devoted biographer of America's wild rivers, finds his way to the tent to talk about the Sierra, and spends a long evening, blond head bent over his notes as he listens to Carl and learns about his mountains.

It is growing late, and a knock is heard at the open door. "Come in!" Carl calls, then starts up to greet a burly young man. "Why, Sweet Pea, where have you been for so long?"

Sweet Pea, a tough horse-packer, is one more of Carl's friends. They talk late into the night about his adventures, his photography, and the flowers and trees that Sweet Pea loves. About horses, too, and the panther with the six foot tail he saw near Wawona, the glaciers of Alaska, the old days in the meadows, the Wind River Range in Wyoming, the Grand Canyon, the wide and wonderful world. Carl's eyes sparkle. He listens and responds like an eager kid.

Dee, who knew Carl when she was a child, has stayed in his tent for several days. Now with grown children of her own, she has hiked the Muir Trail seven times in seven summers with one Sierra Club cup, a few heat tabs, and no tent. If it rains she rolls up her sleeping bag and sits hunched under a plastic trashbag for the night. On a cloudy morning Dee leaves to walk twenty-two miles down to Yosemite Valley. Afterwards Carl discovers some figbars on the shelf. "I wanted to cook her breakfast, but she wouldn't let me. If only I had stuffed these cookies in her pocket!"



NPS PHOTO

In fact, Carl never lacks for female companionship. The women who visit him are the independent ones. "The girls nowadays are worth twice what the boys are," he asserts. "They've got more gumption, more get-up-and-go." Young women rangers come by to borrow his hat for a skit or check out a flower or a point of Yosemite history. A willow girl in flowered skirt and soft voice appears. Carl embraces her fondly and asks her name. "You won't remember me," she explains, "but I'm Barbara. I was on a walk with you, and you said if I had a question I could come see you at your tent."

"I'm so glad you've come," says Carl simply. Barbara stays for an hour talking about flowers and

Without the aid of carabiners, Carl demonstrates his rappelling technique. Note pipe in his mouth.

A portrait of a young Carl Sharsmith.

Shakespeare. Then he takes her for a walk in the meadow to look at the golden sedge, "which I never saw here before this year, and suddenly it's everywhere!"

Walter and Nan St. Goar, Carl's doctor friends from Harvard, stop to pass the time of day. Walter likes to fish, and Nan is keen on botany. Shortly afterwards Fiona from his Alaska days, now a Harvard medical student, breezes in from a backpack with a friend, and they make French toast and everyone talks at once.

Now Ann and Cathy appear, tired but exultant from climbing

Mount Lyell. They are faithful followers and frequent tent-visitors. At the end of each season when the staff at the meadows leaves, Carl and Ann take a little trip, usually east of the Sierra to look at the Great Basin flowers. He urges Ann to drive up narrow roads into the Inyo Mountains, or lickety-split across Nevada, and when night comes they make camp among the scented pinon pines and junipers under the stars. One evening when it clouded over and a few drops came down, Carl laughed. "It's nothing to worry about, Ann," he murmured as they dropped off to sleep in their sleeping bags. "It's a dry rain."

Ann remembers the day Carl invited her for "a bowl of good



NPS PHOTO

soup," in the tent. He bustled around chopping onions and potatoes and pouring meat stock he'd saved in a jar. Soon it was done, and smelled delicious. Ann took a big spoonful. "That's funny," she thought, and pulled something hard and sharp out of her mouth. It was a nail. She slid it under the bowl and tried again. Two nails this time.

"Carl," she ventured, "there are nails in this soup."

"Really?" He dipped up a spoonful and saw it was full of nails. He puzzled a moment and then began to laugh. He giggled,

***He gives himself to people with the quiet steady glow of an unquenchable flame. Others may be preoccupied, self-absorbed, careless of those around them, but Carl is open, he is there when they need him.***

he chortled, he howled until he had to wipe his eyes. "You see, Ann," he finally explained, "I had this left-over ham stock, and I poured it into a bottle I had on the shelf. Only," he had to laugh again, "the bottle was full of nails!"

A blue-eyed Cherokee woman has gone on several of Carl's Tuolumne walks. Awed and warmed by the wisdom of "The Grandfather," she gives a pipe ceremony one afternoon in his honor. Sitting among the boulders below his cabin she talks about the symbolism of the pipe, its handmade soapstone bowl, and the eagle feathers that adorn it. She stuffs it with sweet herbs, holds it up to the four cardinal directions, to the heavens and toward the earth, and says a prayer for each direction. Then she lights the pipe and passes it around the circle of friends who have gathered. Each one takes a puff and makes a silent prayer. Afterwards she talks about The Grandfather and his place in the cosmos, and gives him the eagle feathers from the pipe and some minerals in token of the ceremony. Carl thanks her with simple Indian dignity and grace.

Peter (who will spend the following summer with Carl in Switzerland), a Swiss landscape architecture student and volunteer park naturalist for the summer, produces a *Cryptantha* to be identified. A geologist brings his latest paper on glaciation. An archeologist shows an unusual obsidian point. Rangers Sarah and Ken have a new baby Carl must see — perhaps in the covert hope that he will lay upon it his wordless blessing. An official from the National Park Service asks his opinion about the preservation of the meadows. Art from the Merced Canyon Committee talks of the fate of the Merced River. A friendly nurse takes his pulse. An admiring photographer takes his picture. Susie gives a French horn concert.



NPS PHOTO

The veteran ranger relaxes in camp.

And there are the food offerings, which arrive at Carl's tent as regularly as if he were a yellow-robed monk with a begging bowl. His food budget, already modest by habit, is minuscule because of the largesse poured upon him. Toni brings breakfast. Toby and Nobi come laden with German beer and thick steaks to cook on his old wood stove. A mysterious stranger comes bearing a five pound box of bacon-ends, one of Carl's delicacies, from Bishop. A cake or a pie materializes out of thin air, melons and peaches from the San Joaquin Valley are heaped on his refrigerator alongside a brace of trout and a loaf of home-

attention. Each anecdote is related as though for the first time.

Carl moves easily among human moods. A joke brings a deep prolonged belly-laugh. A sad tale can evoke a tear. He is outraged by callousness or stupidity. He is playful. On a walk among spring-green horsetails he takes a handful, cuts them into different lengths, and blows a tune like the great god Pan himself. He is Christian and pagan; he is human. "Hath not a Jew eyes?" he quotes from Shakespeare, "hath not a Jew hands, organs, dimensions, senses, affections, passions? . . . If you prick us, do we not bleed? If you tickle us, do we not laugh?" And in that moment he is the anguished Shylock.

Yes, he knows the world is not all good. Yet, despite an occasional grumble against times that are out of joint, he is profoundly optimistic and forward-looking. He doesn't think of death and decay, he thinks of spring and growth. He talks little of his own demise, and much of what he will do tomorrow or next year. He doesn't look at the youth around him through a long tube like a remote astronomer, but rather he borrows youth's eyes and sees each flower as though for the first time.

Where do his breadth and depth and timelessness come from? Mysteriously as mycorrhizal filaments in soil that burst into flamboyant fruiting and are said to make a forest possible, Carl has grown his personality; his tree of life, silently and richly. As a tree with spread branches, he stands with open hands giving nourishment and love to all who touch him.

made bread. People feed Carl, not because he is starving, but because they want to give back something for all he has given to them. And then, as Benjamin Franklin said of old mistresses, he appreciates it so much.

Thus is life in Sharsmith's tent — an ordinary ranger's tent with an extraordinary inhabitant. And in the great parade, the frankincense and myrrh of friendship offered and received, Carl's gift becomes evident. He gives himself to people with the quiet steady glow of an unquenchable flame. Others may be preoccupied, self-absorbed, careless of those around them, but Carl is open, he is there when they need him. Each question posed is pondered and answered with all his

# The Forest Service View of Park Expansion

*Editor's note: In response to a proposal by Congressman Rick Lehman to expand the boundaries of Yosemite National Park, the U.S. Forest Service issued the following memorandum to the public on October 21, 1988. Authored by Forest Supervisor James L. Boynton, the memo is reprinted in its entirety.*

On January 6, 1987, Congressman Richard Lehman, 18th Congressional District, California, introduced HR361, an Omnibus California National Parks bill. One provision of this legislation contains "skeleton" language to consider expansion of Yosemite National Park.

The expansion of the Park would include National Forest System lands on the Sierra, Stanislaus, Inyo and Toiyabe National Forests. The proposal looks at doubling the size of Yosemite National Park.

HR361 proposes the transfer of 153,000 acres of Sierra National Forest System lands to the Park Service. If that transfer would occur, we can anticipate the following changes in management:

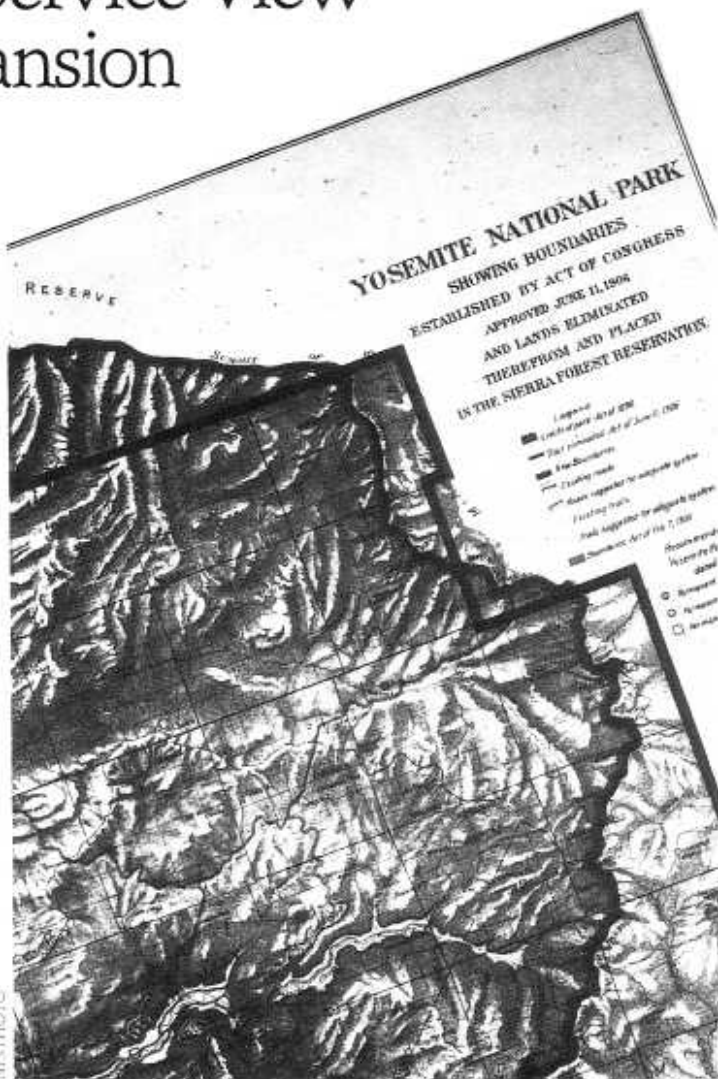
## Recreation Management

Hunting will no longer be allowed under National Park jurisdiction. The 77 Corral area provides some of the best remote deer hunting opportunities on the Sierra National Forest.

National Parks do not allow dogs in the backcountry. Currently, the Forest Service permits visitors to travel with their dogs.

No firearms are allowed in the National Park. National Forests allow individuals to have firearms.

Current special use permittees will lose their permits. The Yosemite Park and Curry Company has exclusive rights to all concessionaires (sic) in the National Park. The Sierra National Forest has 6 special use permittees that would lose their permits.



NPS PHOTO

Current Off Highway Vehicle trails would be closed and travel restricted. Off Highway Vehicle routes that would be closed due to the expansion of the Park include Green Mountain, Cabin Mountain, Hites Cove, Iron Lakes, Star Lakes, and Grizzly Creek.

## Wilderness Management

Most of the Sierra National Forest proposed for transfer to Yosemite National Park is already in Wilderness status. The management philosophy and administration of this area would not significantly change because both agencies are directed to manage Wilderness areas under the 1964 Wilderness Act.

The Forest Service currently manages more wilderness acres than any other agency. Most of the current wilderness management research is being conducted by the Forest Service research stations.

Map showing the boundaries of Yosemite National Park before and after 1906.

## Economics

The Park Service would not permit timber harvesting, personal use woodcutting and gathering, and mining.

Madera and Mariposa Counties could be affected by the loss of jobs that are supported by the timber and mining industry. In addition, the counties would lose a portion of their 25 percent receipts; these funds are generated from timber harvesting, grazing, and recreation fees on the National Forest. The counties use the dollars for schools and roads.

The policy of the Park Service is to acquire private lands within a National Park, when the use (on private land) may not be compatible with the philosophy of the area. Approximately 340 acres of private land is located within the proposed Park expansion area.

## Wildlife and Resource Management

The National Park Service management philosophy with regards to cattle grazing is to look at the existing use and determine if it is compatible with other ongoing uses. If the Park Service determines that cattle grazing is not compatible, the existing cattle permittee, Jim McDougald, would lose a portion of his grazing allotment (Jackass Range Allotment). To eliminate this portion of his allotment would probably make the remaining area too small to manage as a single allotment. Cattle trespass into the Park would be a continual problem without a substantial amount of fence construction and maintenance.

The State of California would lose the authority to manage wildlife populations on the Federal lands administered by the Park.

The current Forest Service Spotted Owl Habitat Network would be reduced.

The management of the habitat of San Joaquin Deer Herd would be divided between two Federal agencies.

I hope this information helps you understand the differences in the management philosophies of the Park Service and the Forest Service and the different types of uses that are permitted.

If you have any questions on the Yosemite National Park expansion, or would like additional information on the management of the Sierra National Forest, please contact me or your local District Ranger.

James L. Boynton  
Forest Supervisor  
Sierra National Forest

# Past and Future Uplift (Revised)



Jeffrey Schaffer

*Editor's note: During 1987, Mr. Schaffer authored a three-article series on Sierra Nevada uplift which appeared in this journal. His conclusions were somewhat controversial and prompted letters from geologists at the U.S. Geological Survey.*

During my first semester back at UC Berkeley (I'm working toward a PhD in Physical Geography) I did some individual research on Sierra Nevada uplift, reading about 100 papers. While scrutinizing Lindgren's "classic" 1911 paper, I discovered a piece of evidence that scuttled my basic hypothesis on Sierra Nevada uplift.

It only takes one hard piece of evidence to destroy the most passionately argued hypothesis. In the southern Sierra, around the headwaters of Onion Valley Creek, there are Eocene non-marine sediments in the Sawpit Flat gold district. These are part of the north fork of the Tertiary Yuba River. Today they range just above and below the 6000-foot elevation. Since these were very likely deposited near sea level, then in this locale there must have been close to 6000 feet of uplift. My model indicates only about 500 feet of uplift, and that this uplift occurred only during the last one million years. In my model, I attributed the discrepancy between my figures and those of others to erosion, since my model gives net uplift after erosion, while others give total uplift before erosion. But surely there wasn't about 5500 feet of erosion during this relatively short time!

From this I must conclude that my basic premise—no significant Sierran uplift until the Juan de Fuca plate has passed north of the area—is untenable. Huber's, Lindgren's, Matthes' work—which all suggest substantial uplift before the passage of the plate margin—appear to be valid conclusions. Still, Huber, Matthes, and Slemmons *et al*



NIS PHOTO

show increasing rates of uplift in late Cenozoic time, more or less as my model shows. I therefore take the collective evidence to imply that uplift began with the creation of the Juan de Fuca plate, which began to subduct beneath the Sierra Nevada roughly 30 million years ago. Then, once the plate's trailing margin left the area, the Sierra Nevada rose at a faster pace, starting in the south and working north, as discussed in my model. Perhaps as Hay suggested, a change in subduction geometry could also have had an effect on the rate of uplift.

If there's any consolation in the demise of my model, it's that likely my model is not the only one to fall. Perhaps all the plate-tectonic and geophysical models are also seriously damaged by the validation of the classic studies. Like mine, all assumed uplift

didn't begin until about 10 million years ago.

In retrospect, if I had read more on Cascade Range tectonics, I wouldn't have eagerly accepted the idea that the Juan de Fuca plate's subduction beneath the Sierra Nevada was reliably uniform through time and space, as it superficially appears to be in the Oregon Cascades. The tectonics involved to cause the uplift of the Sierra Nevada may be as complex as those now operating in Washington. Therefore, I cannot say when Sierran uplift began nor when it will end.

How does all this affect the three articles I wrote for the Yosemite Association? Well, the model could never predict past or future uplift to the nearest foot, as the article reads, and now I can

be no more specific than Huber and others: uplift appears to have been going on at a faster rate in the last few million years than it was 10-30 million years ago. The Yosemite landscape will continue to rise, but when the rate will begin to slacken (if it hasn't begun already) is anyone's guess. The same goes for when the range will top out. My model assumed it had done so along the Sequoia National Park crest, but perhaps Mt. Whitney and other 14,000' peaks are still rising. So, in Yosemite, the land will likely continue to rise, future glaciations are likely to occur, and the canyons will certainly deepen. My specifics are wrong, but the general evolution of the landscape appears to be acceptable.

## The Fate of the Master Plan

### The National Park Service

recently announced that a major re-examination of the 1980 Yosemite General Management Plan (GMP) is being undertaken to study all of the problems that will affect the future of Yosemite National Park. Such a review was prompted by a feeling on the part of NPS officials that certain objectives of the plan are unrealistic or unattainable given present funding levels and changed circumstances.

Notice of this study came on the heels of the recent controversy surrounding the proposal to build new housing facilities at Yosemite Lodge so that a total of 452 employees of the Yosemite Park & Curry Co. could be accommodated there. Supporters of the idea argued that to build the housing in El Portal (as called for in the GMP) was not feasible given the perceived paucity of buildable land in that community. They also suggested that building the dormitories outside Yosemite

Valley would result in increased air pollution and traffic congestion caused by the new commuters, and in inconvenience for the concessioner and its employees who work split shifts.

A number of observers opposed the housing development on the grounds that it violated the GMP as they read it. The plan calls for reducing employee housing and general development in Yosemite Valley. Reportedly, about 40 letters in opposition to the proposal were received by the NPS as part of the environmental review process.

As the controversy grew, the National Park Service made the decision to delay consideration of the Yosemite Lodge employee housing and to address it in the context of the broader GMP review. A *Draft Yosemite General Management Plan Examination Report* will be completed in May and then released for public comment. That document should give a strong indication of what the future holds for Yosemite and for its General Management Plan.

# Yosemite Viewpoints

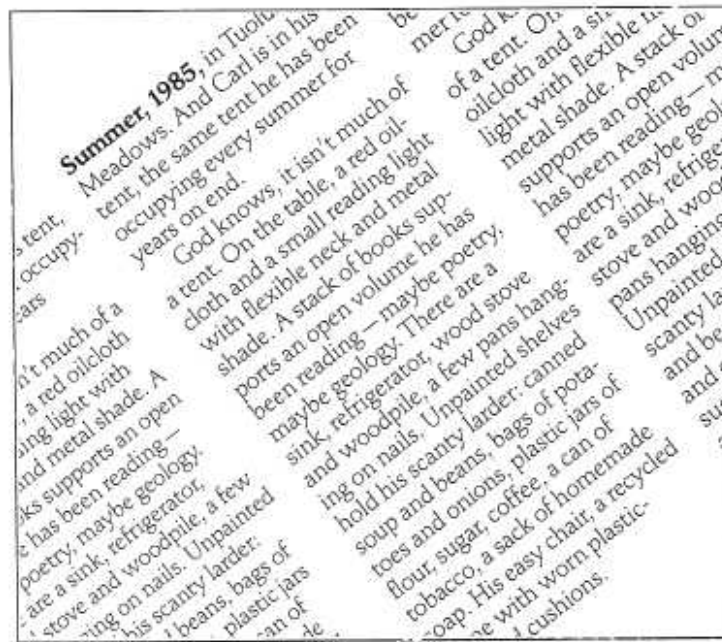
## Save Bodie

The old frontier mining town of Bodie, the best known and most interesting ghost town in the American West, is threatened by a major gold mining proposal. Galactic Resources Ltd. of Vancouver, Canada is behind the effort. There are strong indications that they will develop an open pit mine and remove the entire ridge behind the town. The cyanide leaching process typically used would enable them to extract gold from some 25 million tons of low-grade ore. Friends of Bodie fear that this massive industrial enterprise will permanently destroy Bodie's natural environment and ruin the hauntingly quiet, stark, and lonely setting of the state historic park.

Once a wild and woolly boom town of some 10,000 people, Bodie has survived fire, weather, and other threats for more than a century. Today it is protected in a state of arrested decay by the California Department of Parks and Recreation. But Bodie's setting in a natural basin, high in the eastern Sierra, is an integral and important part of Bodie's meaning to present and future generations. And even the old buildings within the town itself could be destroyed by the confusion, vandalism, constant truck traffic, and 24-hour-a-day blasting that are part of a major open pit mining operation.

A disturbing indication of Galactic's environmental attitude is contained in an investment research report prepared by Kitcat, Aitken & Company for distribution to prospective investors in Galactic Resources Ltd. This report states that if a cyanide leach plant is not permitted by California, "Galactic has a contingency plan whereby ore could be transported by conveyor across the Nevada state line where the environmental lobby is not so strong."

The *Save Bodie!* committee of the California State Park Rangers Association needs your help. If



you love the Sierra and its past, our history and heritage, let your feelings be known. If you want to help, write us and we will provide further information. Mobilize your organization through its newsletter. Write letters to the Governor, your local legislators, and the Mono County Board of Supervisors, who will be issuing the mining permits. (We'd like copies for our records, too.) Tell everyone you know of the threat to Bodie. Funds to carry on the fight are also needed. Please write *Save Bodie!* PO Box 28366, Sacramento, California 95828-0366.

People love Bodie, and working together, we can save it. Please help.

Donald Murphy  
President, California State Park  
Rangers Assoc.

Donna Pozzi  
Chair, *Save Bodie!* Committee

## Our Typesize too Small?

You have many young members and maybe many "senior" members. Certainly there are more seniors traveling than any others.

But—the tiny print the bulletin is now using discourages many from reading it with the result

that they lose interest—and so you lose their support for your wonderful projects. Could you cut some of it shorter and use larger print?—and increase your audience.

Barbara Montgomery

Calimesa

*Editor's note: If any other members share this concern, please let us know. We certainly would like to know if small print is a big deal.*

## Why the Violation of the Sequoias?

We have been receiving *Yosemite* since we were in your beautiful park two years ago. Having never visited the west in the past we were most anxious to see California but especially Yosemite. We travelled from San Francisco down to the valley across the state of Yosemite. We were particularly impressed with the change of scenery. The scraggy hills surrounding San Francisco; through the vegetable basket and over the yellow-gold grasses before the entrance to Yosemite. Then suddenly, a few miles before El Portal, the landscape changed dramatically and a new world began. It was startling.

The purpose of this letter is our impression of the state of things in the Park itself. Even though we were most pleasantly surprised at the rest of the park, the area of real shock, if you will, was around the giant sequoias. We were aghast at the care around these tender trees even though they are so big. The flagrant violation of the areas immediate to the trees was of particular concern. We simply couldn't understand why the park officials would allow so many cars over the root system/ecology and the trekking of so many feet day in and day out. It would appear to us (being novices) that we would regret our loss of integrity to this beautiful natural resource and that sometime in the future we would pay for our mistrustment of the trees.

Of course, we were among the people who paraded but still we think that the least all of us could do is not to be so close to the base of these trees.

Naturally, it was good to see that at last man is starting to think that there may be a day not too distant that he will regret the blundering into things he knows not too much about. With good care and with much thought nature will always treat (some pun intended) us as we treat her.

Maybe we will have to prevent such mobility in the park and resort (God forbid) to tour busses or some-like manner so that everyone can enjoy this marvel. We are extremely glad that at last someone (what took them so long... we always knew) is starting to think of the consequences (shades of Yellowstone).

Thank you.  
Donald and Betty Newton  
Olney, MD



BRIAN LROGAN/NTS

Annual reports tend to be trite and full of the usual glowing descriptions of impressive goals reached during the year. Such accounts are so universally exaggerated that it sometimes is difficult to distinguish the puffery from the substance.

Having made that observation I must now somehow express in credible terms that 1988 was the best year in the history of modern man for the Yosemite Association. We sold the most books, made the most money, and accomplished more than ever with our various programs. In so doing, we also benefitted Yosemite in bigger and better ways. We are pleased with what we achieved and satisfied with our contributions to the park.

As ever, our success depended on our thousands of members, donors, suppliers, volunteers, friends, neighbors and other affiliates. We express our deep thanks to each and every one of you. Please take the report that follows with a grain or two of salt (we too are given to hyperbole), but at the same time take pride in what you have helped us accomplish during the past year.

Steven P. Medley, *President*

1 9 8 8

*Association membership held strong with 4,604 active members*

## Board of Trustees

Because no nominations for board candidacy were made at the annual members' meeting, the board nominees for the three seats to be filled were declared elected without a vote, as provided in the Association bylaws. Serving new six year terms will be incumbents Tom Shephard, Ed Hardy and Dan Wolfus. Mr. Shephard, Chairman of the Board of the Yosemite Association for many years, is an attorney in private practice in Stockton. His contributions to the organization and his exemplary leadership have been invaluable.

Ed Hardy is President of the Yosemite Park & Curry Company, Yosemite's largest concessioner. His knowledge of park operations and his willingness to work cooperatively with YA have greatly benefitted us. Dan Wolfus has been active with both the Association and the Yosemite Fund. The President of Hancock Savings & Loan in Los Angeles, he owns a home in Wawona and regularly visits the park.

1988 Park-to-Park Exchange Ranger, Felicity Savage, from Queensland, Australia, worked in Yosemite as part of the Yosemite Association grants program.



BRIAN GROGAN/UNES

## Membership

Yosemite Association membership held strong in 1988 with 4,604 active members in the following categories: Regular 3,084, Supporting 486, Contributing 318, Sustaining 102, Life 549, and Participating Life 65.

YA members had a great selection of activities to choose from this past year. In April, approximately 300 members arrived for the Annual Spring Open House and attended lively slide shows and talks on search and rescue, the backcountry, fire management, rock slides, and other behind the scenes activities.

Later in the year, the Thirteenth Annual Members' Meeting was held on a beautiful fall weekend in Wawona. Patricia Schifferle, Regional Director of the Wilderness Society, was the featured speaker, and Park Superintendent Jack Morehead led a wide-ranging question and answer period. Members also enjoyed walks and talks, a raffle, barbecue dinner and barn dance.

During the summer months, a dozen dedicated members staffed a new Museum Gallery and also an information booth in Yosemite Valley, where they answered visitor enquiries and signed up new members for the Association. Enthusiastic YA members also participated in two Work Trips last summer which tackled major cleanup projects parkwide. The cooperative program was sponsored by the Yosemite Association, the Yosemite Institute, the Yosemite Park & Curry Co, and the National Park Service.

Previous page: The 1988 Yosemite fire season was a fairly quiet one. Fire crews are preparing themselves for dry conditions in 1989 brought on by a third year of light winter precipitation.



1 9 8 8

*For the first time in the Association's history, gross sales exceeded \$1 million*

## Sales/Publications

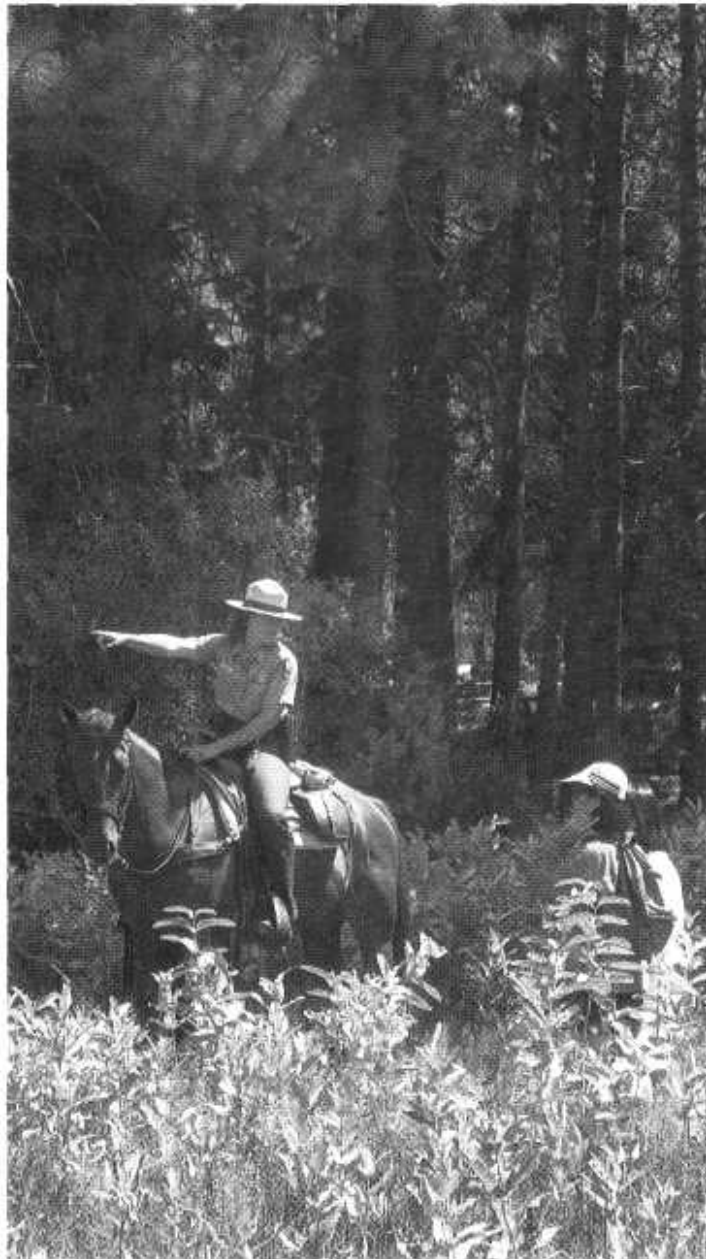
Another healthy year was experienced by sales in 1988. For the first time in YA's history, gross sales exceeded \$1 million. This represented an increase of 18% over last year's figures. This improvement was due in part to an enlargement of sales space at the Yosemite Valley Visitor Center, extended hours of operation, and increased coverage utilizing additional sales registers. A new inventory system for the smaller sales stations also improved efficiency.

The number of different publications and sales items offered to the public increased to 1,200, which included several new Association products and reprints. New notecards by William Neill and William Alsop were developed and proved to be popular with park visitors. Reprints included "Discovering Sierra Reptiles and Amphibians," "Yosemite Indians," Sequoias of Yosemite National Park, and "Yosemite Wildflower Trails."

At the biennial meeting of the Conference of National Park Cooperating Associations, the Yosemite Association received two awards for excellence in publishing. "The Yosemite Fun Book" by Michael Ross received an honorable mention in the children's book category, while Stephen Lyman's "Uzumati" poster, co-published with the Greenwich Workshop, earned an honorable mention as a joint production.

In 1988, rangers on horseback patrolled throughout the park. In 1989, the horse patrol program is in danger due to inadequate funding.

BRIAN CROGAN/INES



## Contributions to the NPS

The Yosemite Association was the first cooperating association and was originally formed to accept a donation for the construction of the Yosemite Museum. Through the years we have been helping visitors enjoy their

national park experiences through our contributions, services, publications, and programs. This year was no exception with contributions of \$152,600 to N.P.S. and \$22,970 to individual scientists and researchers. The 1988 donation figure combined with previous years' totals equals \$1,494,073 spent in gifts to the National Park Service over the last 20 years.

## Contributions

Interpretive Program	\$ 49,002
Museum Acquisitions	28,703
Research Library	8,827
Free Publications	27,335
Sales & Information	
Clerks	21,539
Art Activity Center	350
Warehouse	1,270
Administration/Public	
Relations	10,823
Teacher interns	4,751
Total for Year	\$152,600

## Grants Program

A formal Yosemite Association grants program was implemented during 1988 with a total of \$22,970 committed to a variety of research projects. The five grants ranged in their topics from pollen analysis to white-tailed ptarmigan to the history of Ostrander Lake Ski Hut. The program is under the supervision of the National Park Service and will be expanded each year as the budget allows.

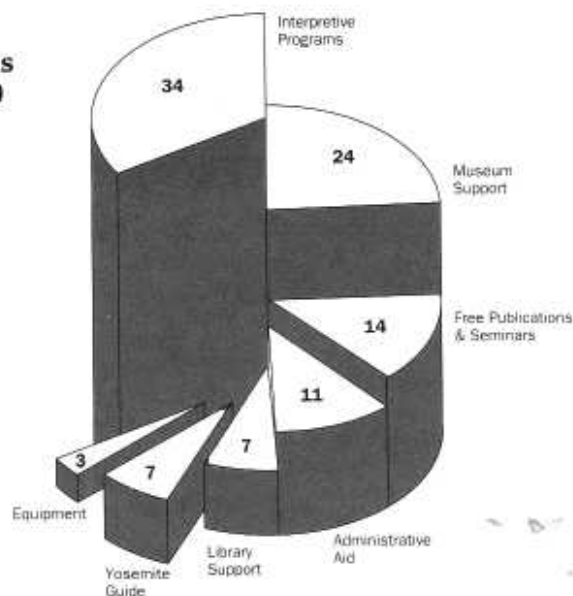
Park to Park Exchange	\$ 3,500
David Gaines Award	500
Ostrander Lake/ 50 Years	3,000
Peregoy Meadow Research	7,500
White-tailed Ptarmigan Research	3,645
Swamp Lake Research	1,550
Mountain Beaver Research	3,275
Total for Year	\$22,970

# 1 9 8 8

## Balance Sheet, December 31, 1988

	<i>Operating Fund</i>	<i>Restricted Funds</i>	<i>Plant Fund</i>	<i>Total All Funds</i>
<b>Assets</b>				
Cash	\$129,241	\$100,844		\$230,085
Accounts receivable	\$35,743			35,743
Prepaid expense	60			60
Inventories at cost	330,980	5,706		336,686
Equipment			\$97,890	97,890
Accumulated depreciation			(45,769)	(45,769)
<b>Total Assets</b>	<b>496,024</b>	<b>106,550</b>	<b>52,121</b>	<b>654,695</b>
<b>Liabilities</b>				
Accounts payable	25,209			25,209
Grants payable	10,985			10,985
Loan payable	12,500			12,500
Accrued taxes	5,273			5,273
Accrued payroll	4,155			4,155
Vacation payable	6,034			6,034
Deferred restricted gifts		106,550		106,550
<b>Total Liabilities</b>	<b>64,156</b>	<b>106,550</b>		<b>170,706</b>
<b>Fund Balances</b>				
Invested in equipment			52,121	52,121
Unappropriated	431,868			431,868
<b>Total Fund Balances</b>	<b>\$431,868</b>		<b>\$52,121</b>	<b>\$483,989</b>
<b>Total Liabilities and Fund Balances</b>	<b>\$496,024</b>	<b>\$106,550</b>	<b>\$52,121</b>	<b>\$654,695</b>

**Total 1988 Donations to the NPS: \$152,660**



1 9 8 8

## Statement of Activity

	<i>Operating Fund</i>	<i>Restricted Funds</i>	<i>Plant Fund</i>	<i>Total All Funds</i>
<b>Support and Revenues</b>				
Publication sales	\$1,071,332			\$1,071,332
Seminars	94,916			94,916
Memberships	107,236			107,236
Gifts		\$11,583		11,583
Investment income	10,915			10,915
Theater	89,972			89,972
Revenue, auxiliary activities	85,630	55,984		141,614
<i>Total Revenues</i>	<b>1,460,001</b>	<b>67,567</b>		<b>1,527,568</b>
<b>Expenses</b>				
<i>Support services:</i>				
Management and general	226,674		\$ 8,591	235,265
Membership	59,510		25	59,535
<i>Cost of sales and expense of auxiliary activities:</i>				
Publication costs	689,107		2,578	691,685
Seminars	86,488		314	86,802
Theater	81,982			81,982
Auxiliary activities	96,057			96,057
<i>Total Expenses</i>	<b>1,239,818</b>		<b>11,508</b>	<b>1,251,326</b>
<b>Excess of Revenues Over Expenses</b>	220,183	67,567	(11,508)	276,242



1 9 8 8

*Variety and quality meshed for a very successful Theater Program—29,898 people attended.*

## Other Programs

**Art Activity Center.** Over 4,000 park visitors participated at the Art Activity Center in 1988, and each got a chance to work in oils, acrylics, watercolor, pen and ink, or some other medium. This program, which started eight years ago, continues to be acclaimed by all who stop by the center and become involved. The instructors seem to revel in their "working vacation" of teaching in beautiful Yosemite Valley. Thirty artist-teachers from all over California, Oregon, Colorado, and as far away as Virginia, spent one week each with an average class size of 25 participants. This program is co-sponsored with the Yosemite Park & Curry Co. and National Park Service.

**Sierra Loop Trips.** The greatest part of Yosemite is backcountry and the High Sierra loop trips cater to the visitor who wants a backcountry experience with some of the amenities of "home". The Yosemite Park & Curry Co. operates the high-country camps which provide bed and board, and the Association cooperates in providing trip leaders for groups of 20. Our instructors are seasonal or permanent interpreters, seminar instructors, and experts in biological fields, primarily from the local area. This year we ran 20 trips for 400 visitors.

**Yosemite Theater Program.** For six years the Association has shown that Yosemite visitors are willing to pay a fee for quality evening interpretive programs. This year we offered two programs by Lee Stetson on John Muir, one film and climbing equipment demonstration by Peter Kern, one personally-narrated film by Bob Roney, and a sing-along program of original songs by Gail Lynn Pyle. Variety and quality seem to have meshed for a very successful program. 29,898 people attended this year.



BRIAN GROGAN/NPS

## The Yosemite Fund

Early in 1988, the Yosemite Fund, the fundraising arm of the Yosemite Association, was separated from its parent organization and subsumed by the newly created Yosemite Foundation. At the request of the National Park Service, all funds and other assets of the Yosemite Fund were transferred to the Foundation. All fundraising for general improvements at Yosemite became the responsibility of the Foundation at that time.

The newly created corporation opened its offices in San Francisco in March with Susan Singer acting as its first Executive Director. The Foundation and the Association will remain loosely affiliated and will work together for the betterment of Yosemite.

Over 3.3 million people visited Yosemite during 1988. The Association's varied programs were enjoyed by a large percentage of them.



NPS PHOTO

1 9 8 8

*The Field Seminar Program increased its annual participation total to 916.*

## Field Seminars

A dry summer with drought conditions did not deter the many seminar participants in 1988 who came to Yosemite to enjoy and learn about this unique area. Highlights for the year were several new classes. "Return of the Bighorn" featured a search for the rarely-seen sheep and was a great success due to the tireless energy and dedication of Les Chow and Peggy Moore.

Tom Koerber's new class about insects at Crane Flat allowed students to observe insects in their natural environment and to learn about the subtle ways in which they shape Yosemite's landscape.

John Winter's birding courses encompassed identification, distribution, behavior and breeding of Sierra birds. The classes crossed the crest of the Sierra in search of many of Yosemite's winged creatures and found a wealth of subjects to observe and identify.

Backpackers flocked to beginner through advanced backpack trips. Every life zone was walked through and investigated by students and their trip leaders. Hetch Hetchy, Virginia Lakes, Glen Aulin, Yosemite Creek, Cloud's Rest, Benson Lake and the remarkable Matterhorn Canyon at the base of the Sawtooth Range were destinations for participants from the very young (children starting at age 1) to senior citizens in good shape.

The winter/spring seminar program increased enrollment over 1987 with a total of 323 skiers, spring botany students, and photo workshop participants. The summer/fall program had an increase of 2 participants over 1987, with a yearly total of 916. The goal in 1989 is to provide continued quality in our programs, offer new courses, to identify new areas for backpacks and to bring new instructors into the program.



BRIAN GIOGANNI/NPS

## Film Assistance Program

1988 saw the inauguration of a new YA program designed to assist individuals and companies engaged in film, video and still photography projects in Yosemite. The program objective is to provide guidance, interpretation, and logistical help to filmmakers while ensuring that NPS regulations are followed and that the environmental integrity of Yosemite is protected.

At least four different jobs were handled by the YA film assistance program during the year. The largest was working with Paramount Studios as they filmed segments of a new "Star Trek" movie in Yosemite. Our efforts were rewarded with a \$10,000 donation from Paramount.

## Ostrander Ski Hut

For the eighth straight year, the Yosemite Association handled the reservations for, and staffing of, the Ostrander Lake Ski Hut at the request of the National Park Service.

Ostrander was open from mid-December through mid-April and served approximately 2,700 nordic skiers during that time. The nightly fee of \$9.00 per person offset all expenses and maintenance costs that were incurred.

Yosemite Association sales exceeded \$1 million in 1988. We hope to grow further still in 1989.

*Special acknowledgements and thanks to our  
friends, volunteers and staff.*

#### 1988 Board of Trustees

Beverly Barrick  
Barbara DeWitt  
Carlo Fowler  
Edward C. Hardy  
Jeffrey C. Lapham  
E. H. McLaughlin  
Elvira Nishkian  
Richard C. Otter  
William Popejoy  
Richard Reitnauer  
Lennie Roberts  
David Robertson  
Anne Schneider  
Thomas Shephard  
Phyllis Weber  
Daniel Wolfus

#### Friends of the Association

Arvin & Linda Abbott  
Jeannie Adams  
Barbara Allen  
Martha Allensworth  
William Alsup  
Ansel Adams Gallery  
Connie Archer  
Don & Sue Armstrong  
Tom Armstrong  
Paula Artac  
Sue Austin  
Art Baggett  
Cindy Baker  
David Balogh  
Ruben Balzar  
Don & Rita Banta  
Kris Bardsley  
Craig Bates  
Sue Beatty  
Jon Beckmann  
Barbara Beroza  
Henry Berrey  
Otto Best  
Bob Binnewies  
Betty Blake  
Tom Borchardt  
Ron & Pat Bradley  
Kathleen Braun  
Marjorie Brooks  
Ed Brookins  
Bea Brownson  
Annabelle Cahn  
California Data Marketing  
H. Stuart Campbell  
Dan Card  
Scott Carpenter  
Walt Castle  
Cris Castro  
Les Chow  
Charles Clark  
Sandy Climan  
Dean Coffey  
Andy & Rachel Cohen  
Arnold & Carole Compolongo  
Copy Center  
Norma Craig  
Edie Christiansen  
Crown Printing  
Lisa Dapprich  
Eston & Ethel Davis  
Starr Davis  
Garrett DeBell  
Vivian Deland  
Tim DeWitt

John Dill  
Michael Dixon  
Karen Donaldson  
Dumont Printing  
George Durkee  
Judy Durr  
Rob DuVall  
Rafaello Dvorak  
Linda Eade  
Larry & Susan Early  
Bob Eckart  
Mel Efros  
Kathy Eidem  
El Portal Market  
Fred Elchlepp  
Jon Else  
Brian Empe  
Erna's Elderberry House  
Judy Ernest  
Steve Esson  
Linda Estes  
Don Fay  
Frank Finbrez  
Bruce Fincham  
Fred Fisher  
Roger Folk  
Janis Fogt  
Tom Fong  
David Forgang  
Billy Fouts  
Barbara Fox  
Don Fox  
Carol & William Frantz  
Ed Franzen  
Glenn Fredey  
Robert Fry  
Paul Gallez  
Denise Gedrimas  
Bill Germany  
Dean Glenn  
Jon Goodchild  
Greenwich Workshop  
Clarence Gregory  
B J Griffin  
Jim Grimes  
Helen Groenekamp  
Brian Grogan  
Roland Haas  
Richard Hadley  
Joyce Halley  
Eldora & Ted Halliday  
Ann Harding  
Jack Harman  
Rob Harper  
Larry Harris  
Michael Harrison  
Tom Hauck  
Jack Hicks  
Merrie Hinson  
Shirley Hoaglin  
Malcolm Holser  
N King Huber  
Don Hukari  
Fiona Humphrey  
Ardeth Huntington  
Paula Ingalls  
Milt Irvine  
Tom Jackson  
Les James  
Bob Jennings  
Dan Jensen  
Bob Johnson  
Bill Johnston  
Virginia Kammer  
Vince Kehoe

Peter Kern  
Herb Kinney  
Dorothy Kirkpatrick  
Carlene Kostin  
Ben Kudo  
Matt Kuzins  
Marla LaCass  
Louis Lanzer  
Earlene Lawhon  
Vicki Jo Lawson  
Herb Lee  
Linda Lee  
Martha J Lee  
William LeRoy  
Marlene Luna  
Stephen Lyman  
Ron Mackie  
Mike Maderious  
Burrell Maier  
Michael Mann  
Robin Martin  
Len McKenzie  
Kaye McKinzie  
Tom Meagher  
Nancy Menken  
Karl Merrill  
Martha Miller  
Mono Lake Committee  
Gary Moon  
Peggy Moore  
Andy Moran  
John M. Morehead  
Olga Morris  
Tom Morton  
Jill Mueller  
Joseph Mundy  
Laurel Munson  
Sally Murray  
Marianne Mustelli  
Bill Neill  
Elizabeth O'Neill  
Michael Osborne  
Michael Osborne Designs  
Barbara Nell  
Connie Newton  
Richard & Ellen Niello  
Jeff Nicholas  
Karen Nilsson  
Nick Nixon  
Lawrence Ormsby  
Kathleen Orr  
John Palmer  
Paragraphics  
Paramount Studios  
Robert Pavlik  
Cherry Payne  
Vicki Pearson  
Magda Peregrine  
Joyce Perkins  
Lyman Peterson  
Carole Platt  
Polaroid Corporation  
Tino Pontrelli  
Larry Prussin  
Gail Lynn Pyle  
Sam Racina  
Robert Redford  
Jason Reid  
Jackie Reis  
Horst Remmling  
Ann Reynolds  
David Rice  
David Riggle  
James Robertson  
Joanna Rodriguez

Bob Roney  
Gene Rose  
Michael Ross  
Glen Rothell  
Roger Rudolph  
Leroy Rust  
Tony Safford  
Margaret Sanborn  
Raye Santos  
Savages Trading Post  
Ken Saunders  
Susan Schaefer  
Wolf Schaefer  
Jeffrey Schaffer  
Patricia Schifferle  
Keith Schiller  
Nancy Howard Schulenberg  
Wendy Schwartz  
Scope Enterprises  
Meredith Sender  
Cindy Sharp  
Dean Shenk  
Mark Shepard  
Sherron Sheppard  
Susan Singer  
Louis H Smaus  
Mallory Smith  
Jim Snyder  
Steve Spohn  
Will Staple  
David Starkweather  
Harry Steed  
Lee Stetson  
Lisa Strong-Aufhauser  
Sundance Institute  
Charisse Sydorak  
Techniprint  
Susan Taylor  
Carole Thickstun  
Billy Thomas  
Jean Thompson  
Karen & J R Tomasovic  
Triad  
Cary Trout  
Jim & Kim Tucker  
Neil Tuthill  
John Ulmer  
Unisource  
David Usher  
ValPrint  
Linda Vanderwater  
Steering VanWagenen  
Jan VanWagendonk  
John VanWinkle  
Dennis Vasquez  
Mary Vocolka  
Sharon Walker  
Al Walter  
Howard Weamer  
Mike Webb  
Bea Weiss  
Steve Wight  
Norma Willingham  
Jim & Lynn Wilson  
Oscar Whittington  
Eelco Wolf  
Jim Wurgler  
Bill Wymore  
Yosemite Bank  
Yosemite Institute  
Yosemite Park & Curry Co.  
Yosemite Winter Club  
Zellag  
Zephyr River Expeditions, Inc.

#### 1988 EMPLOYEES

Mike Allenger  
Greg Archer  
Mike Archer  
Annie Boucher  
Judith Braeu  
Ginger Burley  
Steve Botti  
Dietra Balogh  
Christina Condon  
Melissa Carter  
Patricia Darcy  
Dick Ewart  
Earthmother Freeborn  
Diana Francis  
Bob Fry  
Sharon Giacomazzi  
Harriet Gordon  
Beverly Gregory  
Rosa Guinn  
Judy Griffin  
Dianne Gillmore  
B G Godfrey  
Diane Haley  
Sandy Halasz  
Phillip Johnson  
Cam Jacobi  
Linda Jacobi  
Jack Johnson  
Amy Kim  
Therese Lalonde  
Sharon Law  
Joan Mayer  
Edna Michener  
Ann Mendershausen  
Roger McGehee  
Gary Moon  
Kimberly Miller  
Bill Neill  
Ron Orici  
Mark Protti  
David Riggle  
Raye Santos  
Ann Steed  
Wendy Schwartz  
Jeff Smith  
Lisa Strong-Aufhauser  
Allen Schoenherr  
Fermun Salas  
Paul Todd  
Howard Weamer  
Rita Wallden

# Summer Volunteer Opportunities in Yosemite

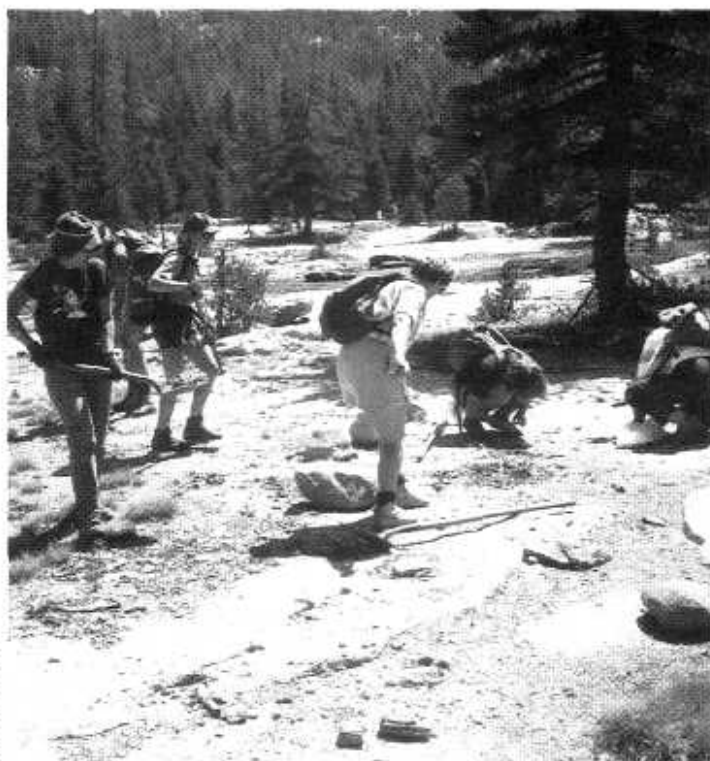
**To spend a summer** in Yosemite can be a great experience — beautiful, long days amidst wonderful scenery. Most volunteers return year after year and plan each summer around their time in the Park.

This summer, YA volunteers in the Valley will split their days between the new Museum Gallery and the outdoor Membership Booth. In the booth, they will answer lots of visitor questions as well as sign up new YA members (last year's group signed up 300 new members!). Living accommodations are campsites, and volunteers are paid \$6.00/working day with a schedule usually of 4 days on and 3 days off. Most volunteers stay one month or longer. The schedule for this summer is fairly complete, but there are often last minute shifts. If you are interested in more information, please contact Holly or Gail in the YA office, 209-379-2646.

In addition to the YA openings, there are some additional volunteer possibilities with the National Park Service for this summer.

**Two positions** are available at Tuolumne Meadows in interpretation. Volunteers will prepare and present interpretive programs and campfire talks on natural history topics. Duties also include visitor center operation and roving interpretive contacts. Tuolumne is the largest subalpine meadow in the Sierra, known for its spectacular natural scenery. Staff live in shared "tent cabins" which are provided free, and receive a uniform plus \$6.00/working day. The work week is 40 hours; candidates need to be available from June 18–September 4.

**One volunteer position** in interpretation/resources management is available in the Crane Flat area of the park. This volunteer will monitor activities of a pair of Great Grey Owls nesting in a meadow. He or she will also talk to visitors attempting to see the birds to prevent intrusion upon their nesting area. Accommoda-



ANN HARRINGTON

Among the jobs of the YA members during the work trips was fire ring removal and obliteration.

tions have not been firmed up at this time, but may be as rudimentary as a campsite in a nearby campground. A uniform and \$6.00/working day are provided. The work week is 40 hours; candidates need to be available from June 18–September 4.

For more information on either the Tuolumne or Crane Flat positions, please contact Cherry Payne at 209-372-0338.

**Four to six volunteers** with an interest in interpreting history are needed to perform costumed living history roles at the Pioneer Yosemite History Center, an assemblage of restored historic structures at Wawona. Shared housing, a subsistence allowance of \$6.00/working day, and costumes are provided. The work week is 40 hours; applicants must be available June 18–September 4. For more information, contact Sue Austin or Lisa Myers at 209-375-6391.

## Summer Work Trips Being Planned

### "A Wonderful Experience.

Thank you." So wrote a participant in one of last summer's YA Member Work Trips. "It was wonderful to be with a group of people who simply had Yosemite's care in their best interest and who were all so eager," commented another person. In July and August of 1988, two groups of energetic members were part of crews who cleaned up trails and rivers, pulled up exotic plants, and worked on dismantling illegal fire rings in various parts of the park.

Similar Work Trips are now in the planning process for this coming summer. There will be two trips, probably one in the Tuolumne area and one in Wawona. Trip participants will probably be camping in a group site, and projects will be organized in the immediate area. The nature of the projects to be tackled by the volunteers will be determined by the NPS District Ranger for each area. YA will provide one of its talented leaders to head up each group.

"I have waited four years for the opportunity to take part in such a program . . .," said another worker, "how many others are there out there like me?" If you are one of those people who'd like to spend a week in Yosemite giving time and energy, contact Holly or Gail (209-379-2646) for more information. As one enthusiastic member summed it up, "It's nice to have an opportunity to give something back to the park."

**Salaried position.** A blacksmith, or someone interested in learning the craft, is needed to demonstrate and interpret blacksmithing skills at the Pioneer Yosemite History Center. Pay is \$5.30/hour but is negotiable. The work week is 40 hours; employment dates are June 18–September 4. For more information, contact Sue Austin or Lisa Myers at 209-375-6391.

**The Mather District Fee Management Operation** is currently looking for individuals interested in working as volunteer campground hosts for the 1989 summer season. The position involves living in the campground, providing visitor information and assisting the campground ranger. Positions are available at Crane Flat, White Wolf, Yosemite Creek, Porcupine Flat, and Tenaya Lake Campgrounds. No hook ups are available for RV's. Uniforms will be provided. For more information please contact Kristin Bardsley at (209) 372-0354.

# Ask The Superintendent

John M. "Jack" Morehead



**Q: Will there be anyone at Glacier Point during the summer of 1989 to explain the mystery of the High Sierra sunset phenomenon?** — *Gerald Kroghman, Auburn*

**A:** Although budget erosion this year will necessitate a sharp cutback (more than 50%) in interpretive seasonal staffing, thereby reducing interpretive services, we plan to assign two seasonal interpreters (a decrease from four) to Glacier Point this summer. We will continue to offer sunset talks, but perhaps not every evening.

**Q: During our last visit to Yosemite, we saw a coyote with a red tag in his ear, wandering down the road. What is the significance of the ear tag? Would it be beneficial to the park rangers if sightings of tagged animals were reported?** — *Robert Porec, San Diego*

**A:** Ear tags are one method used by wildlife biologists in Yosemite to mark animals so that individuals can be identified and data on their movements and behavior can be collected. This data gives biologists a better understanding of animal ecology in Yosemite. This is especially important in the management of animals whose behavior has been influenced by human contact to the point that they are a threat to visitor safety. Animals suspected of causing problems are often marked, and reports of marked animals by park visitors add important information about their current location and behavior.

At this time we are monitoring the behavior of several coyotes that have started "begging" for food along roadsides. This undesirable behavior probably began when coyotes foraging near the road were fed from vehicles by park visitors to lure them closer for photographs, in violation of

park regulations. The coyotes quickly learned that people are an easy source of food and have continued to beg as visitors have continued to provide food. Coyotes with this behavior pose a threat to park visitors by causing unsafe traffic tie-ups. People in Yosemite have also been directly injured by coyotes that have lost their natural wariness of humans. Unfortunately, animals that are such a clear danger to people must, as a last resort, be destroyed, and ear tags ensure that only the most severely conditioned individuals are removed.

Begging coyotes are only one aspect of a large problem concerning park animals accidentally or

intentionally given access to human food. Bears and deer that learn to associate humans with food are similarly a threat to visitor safety and are, therefore, placed in jeopardy. All visitors to Yosemite must know and obey the park regulations that prohibit the feeding of animals and require proper food storage. Only then can we enjoy observing wildlife behaving naturally as important parts of the Yosemite ecosystem.

*Please send any questions that you would like answered by the Superintendent to: Ask the Superintendent, Yosemite Association, P. O. Box 230, El Portal, CA 95318.*

## Superintendent Moves to New Job

**Jack Morehead**, Superintendent of Yosemite National Park since March of 1986, has been named Associate Director of Operations for the National Park Service in Washington, D.C.

Morehead, 56, began his NPS career in Yosemite as a seasonal ranger in 1954. During the early 1970's, he served as Yosemite's Chief Ranger. Before returning to Yosemite most recently, he worked as Superintendent at both Isle Royale and Everglades National Parks.

The new job is considered the Service's number three position and involves the operation, interpretation and maintenance of all the nation's parks. Morehead will assume his new post in late May. Until a successor is appointed, B.J. Griffin, the park's Assistant Superintendent, will serve as Acting Superintendent.

## Yosemite Youth Writing Contest Winners

**The award winners** in the first Yosemite Junior-Senior Ranger Writing Contest have been named, and the results of their efforts reflect great creativity and talent. Entrants were asked to write a song, poem or story about Yosemite and to incorporate such topics as Galen Clark, John Muir, conservation, preservation, nature, national parks and rangers.

Winners from the Junior Ranger (ages 8 and 9) and Senior Ranger (ages 10 through 12) categories received a letter of recognition from the Park Superintendent and a gift from the Yosemite Association.

Junior Ranger winners were Daniel Dillinger of Escondido and Andrew Brown of Encinitas. Christopher Patterson, Deborah Dillinger of Escondido, and Cynthia Fears of San Diego were honored in the Senior Ranger division.

## Galen Rowell to Speak at Members' Meeting



**Noted outdoor photographer** Galen Rowell is scheduled to be the guest speaker at the Yosemite Association annual Members' Meeting on September 16 in Tuolumne Meadows. Mr. Rowell's appearance will coincide with the publication of a new centennial edition of John Muir's "The Yosemite" to be illustrated with the photographer's beautiful color images reproduced in a large format. Besides addressing the membership, Mr. Rowell will be available to sign books and socialize a bit.

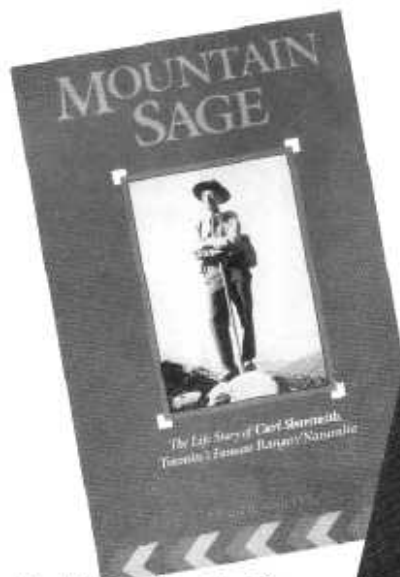
Members interested in attending the September meeting should watch for information in the next issue of this journal. As well, a mailing will be sent which will include registration and housing materials. For additional information, call Gail or Holly at 209-379-2646.



# THE Yosemite

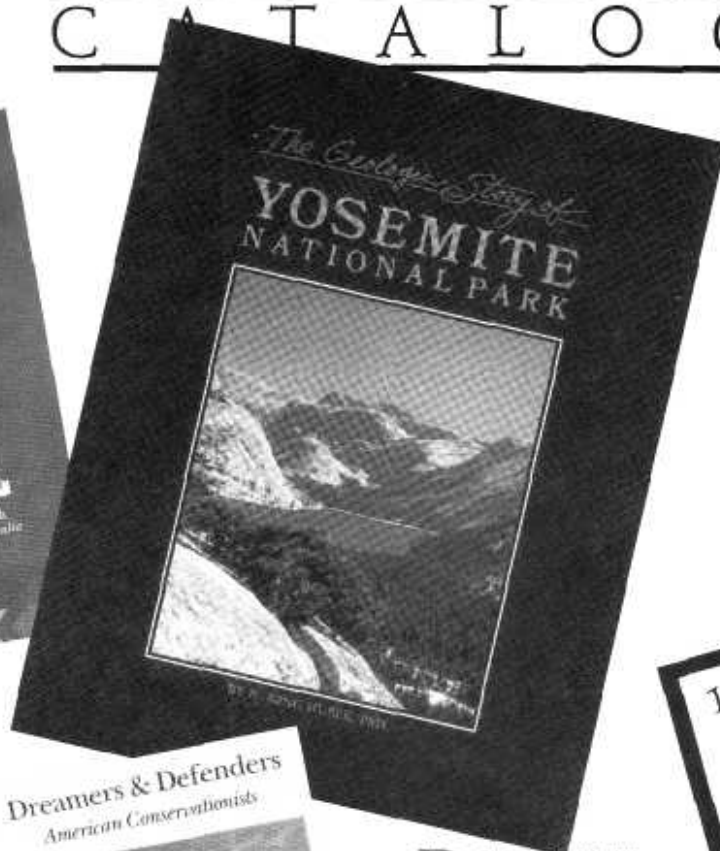
## CATALOG

All items  
**15% DISCOUNT**  
MEMBER



**A** *Mountain Sage: The Life Story of Carl Sharsmith* by Elizabeth O'Neill. At last, here is the long-awaited biography of Yosemite's ranger-naturalist legend, Carl Sharsmith. Following his life from childhood to his work in the woods to his botanizing and his employment as a ranger, the author paints a delightful picture of this complex, fascinating and important man. Fans and admirers of Carl will find this an entertaining and enlightening volume. Yosemite Association, 1989. #550 (paper): \$7.95.

**B** *The Geologic Story of Yosemite National Park* by N. King Huber. The Yosemite Association has recently reprinted this comprehensive geologic study of the natural processes that have created—and are still creating—the stunning terrain we know as Yosemite. We believe it is the best Yosemite geology book available today. Illustrated with numerous color photographs and featuring a generalized multi-color geologic map of Yosemite park and a larger scale Yosemite Valley map, it is written for the layman in understandable, non-technical language. Yosemite Association, 1989. #395 (paper): \$7.95.



**Dreamers & Defenders**  
*American Conservationists*

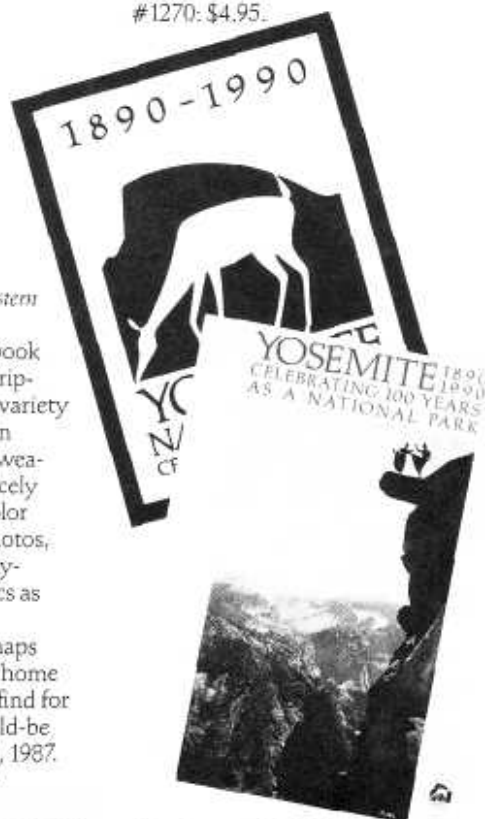


**C** *Dreamers & Defenders: American Conservationists* by Douglas H. Strong. This is a collection of biographies of twelve environmentalists from Henry David Thoreau to Barry Commoner. Combined they form the dramatic and ongoing story of the conservation movement in America. Of particular interest are chapters on John Muir, Stephen Mather and Aldo Leopold. Environmental history at its best. University of Nebraska Press, 1988. #9455 (paper): \$9.95.

**D** *Skywatch: The Western Weather Guide* by Richard A. Keen. This book goes beyond mere descriptions of the fascinating variety of weather to provide an understanding of how weather actually works. Nicely illustrated with both color and black and white photos, maps and drawings, Skywatch covers such topics as fronts, jets, cyclones, whirlwinds, weather maps and building your own home weather station. A real find for weather buffs and would-be weather buffs. Fulcrum, 1987. #16230 (paper): \$13.95.



**E** *Yosemite Centennial Logo Poster* by Michael Osborne Design. This eye-catching design was developed to serve as the official logo for Yosemite's centennial as a national park in 1990. It's printed on a heavy, textured, tan recycled paper in green and rust. The poster is a cooperative publication of Ansel Adams Gallery, Michael Osborne Design and the Yosemite Association, and sales will benefit the centennial event. 18" x 24". #1270: \$4.95.



**F** *Centennial Celebration Poster* from a photograph by George Fiske. This poster image of two daring women performing high kicks on Glacier Point's Overhanging Rock circa 1890 captures the spirit of celebration which will be part of Yosemite's centennial next year. It is printed on heavy, white coated stock as a sepia-colored duotone with green lettering. Its size is 18" x 24". #1155: \$6.95.

# THE Yosemite CATALOG

**G** Yosemite Association Cap. Complete your outdoor wardrobe with this trendy item from the Association collection! It's the perfect hat for a hot, sunny day in the great outdoors—mesh fabric to keep a cool head, a generous bill to shade your face, and adjustable strap in the back to insure a good fit for everyone. All of this plus the Yosemite Association patch to let everyone know what your favorite organization is! Brown with white accent. #1600, \$6.00.

**H** Yosemite Association Mug. This distinctive and functional white ceramic mug has our logo and name imprinted in brown. Holds eight ounces of your favorite beverage. #1625, \$5.00.

**I** Ostrander Lake T-shirts. Become affiliated with an elite Yosemite ski club with one of our fashionable "Ostrander Lake Ski Club" t-shirts. Available in both long-sleeve (light blue) and short-sleeve (white) models, the Ostrander shirts are heavyweight 100% cotton printed in four colors. Short-sleeve (S,M,L,XL), \$10.50. #1670  
Long-sleeve (S,M,L,XL), \$15.00. #1674



**J** Yosemite Enamel Pin. Designed especially for the Association, our enamled metal pin is a work of art. Each of the 10 different glazes is hand placed and separately fired. The result, from William Spear Design, is an eye-catching and colorful piece. The metal enamel pins are relief engraved in a 1/8" x 2" size. #1695, \$11.95.



**K** Pelican Pouch, Wilderness Belt Bag. The Pelican Pouch is not only perfect for carrying field guides, but also offers instant access to all the small items that are usually buried in your pack—pocket camera, lenses, maps, or your favorite trail mix! The Pouch is designed with front snap fasteners on the straps. This allows comfortable positioning on your belt—even between belt loops; no need to take your belt off first. The material is high quality Cordura pack cloth with a waterproof coating on one side. Beige with the dark brown and white Yosemite Association patch, the Pelican Pouch measures 8 x 5 x 2 1/2 inches. #1690, \$11.95.



## Yosemite Association

**L** Yosemite Association Decals and Patches. Our association logo, depicting Half Dome is offered to our members in these two useful forms. Help announce your affiliation with our organization to others by purchasing and using Yosemite Association patches and decals. Patch #1635, \$1.50; Decal #1636, \$1.00.

**M** Black Bear Hand Puppet. Here's a soft and cuddly pet who becomes animated at your whim. By manipulating his moveable head and legs, you can involve him in serious conversation or simply amuse the kids (who love to stow their pajamas inside him). A favorite of young and old alike. He is 11 inches tall and hand washable. #50200, \$28.00. **Special Sale Price: \$16.95.**



### Order Form

Credit card orders call: (209) 379 2648 Monday-Friday, 8:30am-4:30pm

Item #	Qty.	Size	Description	Price Each	Total
1					
2					
3					
4					
5					
6					
7					
8					
9					

Subtotal:	
Less 15% Member's Discount:	
<b>Subtotal A:</b>	
6% Sales Tax (CA customers only)	
Shipping charge	\$ 1.50
<b>Total enclosed</b>	

Ordered by: \_\_\_\_\_  
 Name: \_\_\_\_\_  
 Address: \_\_\_\_\_  
 City: \_\_\_\_\_ State: \_\_\_\_\_ Zip: \_\_\_\_\_  
 Membership Number: \_\_\_\_\_



NPS PHOTO

# 1988 Park Highlights

## January

**The Wilderness Management Plan** for the park was completed.

## February

The new Museum Exhibit Gallery was opened to the public.

## March

**Eleven bighorn sheep** were reintroduced into Lee Vining Canyon, bringing the herd size to 33 sheep.

**A GAO report** stated that Yosemite needs \$76 million in construction money to bring park facilities up to acceptable standard.

## April

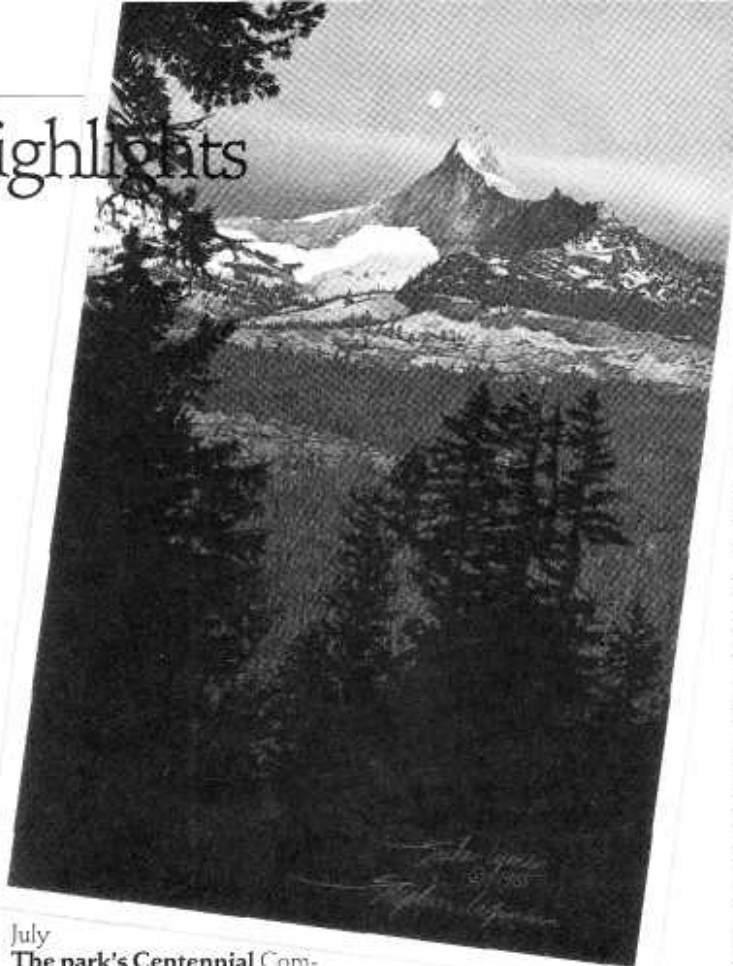
Styrofoam plastic products purchase and use phased out by NPS and Yosemite Park & Curry Co. **The Tioga Road** opened on April 29.

## May

**"Flag Over Yosemite"** stamp dedicated by the US Postal Service.

## June

**The Walker Fire**, one of four fires started by lightning, created major smoke problems and closed one campground.



## July

**The park's Centennial Committee** was appointed and plans for the 1990 celebration started. **CBS filmed** for its program "48 Hours" in the park during the July 4th weekend.

## September

**Paramount Studios** began filming "Star Trek V" in the park.

## October

**The 50th anniversary** of the Civilian Conservation Corps was held in the park.

## November

**The Tioga Road** closed on November 14.

**A black oak restoration** project was begun near Yosemite Falls.

## December

**Long-time Chief** of Resources Management, Dick Reigelhuth, died unexpectedly.

## Greenwich Workshop Donates Lyman Prints

**The Greenwich Workshop**, our fine friend from the east coast, has made another generous contribution to the Yosemite Association. This time it is in the form of 900 fine art prints of Mt. Clark by artist Stephen Lyman. Entitled "Colors of Twilight," the prints are 11" x 15" in size and printed on high-quality white matte stock. The predominant colors are blues, tans and pinks, and they combine to produce a stunning image which measures 6 1/2" x 11". A raised bevel and a silver accent line frame the image and add a truly elegant touch.

On the way to Yosemite from the Greenwich Workshop, the prints made a stop in Sandpoint, Idaho, where Stephen Lyman hand signed each and every print. While this run of prints cannot technically be called a limited edition, no other versions or copies of "Colors of Twilight" will be printed or sold.

The Yosemite Association is deeply appreciative of the continued generosity of both the Greenwich Workshop and Stephen Lyman. Last year, we were the fortunate beneficiaries of two posters produced especially for the Association by the Greenwich Workshop of Lyman's wildlife art. The commitment to the environment, to wildlife, and to the work of the Yosemite Association demonstrated by both David Usher, the Workshop's President, and Stephen Lyman, is impressive and commendable. We send them many thanks.

If you would like to purchase a copy of this special print, please use the order form at the back of this journal. The price is \$19.95 and the item number is 1170.

## New Members

### Regular Members

Laurie Linfoot, Phyllis & Norman Graff, Sherryl Taft, Rebecca Ward, Mike Ignatius & Carla Shatz, Sandra Taft, Tom Childress, Ed & Bobbi Kendig, Gary Wells, Scott Holtslander, Ginny Sumner, Theodosia Benjamin, Stephen & Karen Underwood, M L Cruikshank, Helen Taylor, Marjorie Overland, Scott J Carlson, David Schneider, Norman Wakeman, Andrew Shoryer, Eleanor River, John Getz, Mrs Glorvayne Bryant, Richard Orthen, Alexandra Enders, Vernon Yee & Cecelia Town, Milton Krieger, Dennis Bennorth, Laura Post, Jerry Rinaud, Sandra Brye, Sharon Hendee, Sheri Schnabl, Robert Wilson, William E Southwick, Kim Jenson, Norman Beeson, Sam Hsu, Jeff & Lisa Timm, Mike Welch, Billie Louise Jones, N Gulambusein, Lyle Daehn, Nancy Ann Graves, Paul & Margery Peterson, Laura Lee, Genevieve & Lorenzo Cuevas, Michael Hayes,

Johng Kil Lee, Richard K. Moore, Pat Meehan, Adrienne Tripp, Judith Deberry, Adam Burk, Carol Caviness, William Giles, Sylvia Tsang, Tom Meagher, Stanley Clough, Pat Rickert, Dodge Hill, Cindy Werner, Ray Olver, Carol Bisson, Rick Workman, Kevin Wong, Judy Talley, Micah Babinski, Nathan Miller, Kathleen Hull, Topsy Jackson Araya, Nancy Quinn, Donna M Pardon, Dan & Michelle Horner, Alan & Erica Peterson, David Lann, Kirsten Blockhus, Stephen Shamberg, Edna Erismans, Conrad Masters, Mattos/Chandler, Chi Wong, Steven Sumnick & Kathryn Patenande, Diane Lawrence/Rummier, Herbert York, Robert Kelly, Laurel Koss, Lorna Taylor, JT Ciolino, Rick Dexter, Beverley Burr,

### Supporting Members

Beech & Louellen Hill, Mr & Mrs Harold Gotz, William Stout, Steven R Clemmens, Mr & Mrs Michael Hecker, Patricia Inouye, Robert Himisey, Dr Susan Harris, Ken Robin-

son & Nora Riley, Marianne Salamone, Chris Pieper, Robert Bruner, Craig & Angie Congdon, Philip Swan, Steve Spohn, Mervin Bruck, Norne Cerven, Leonard & Diane Hill, Bob & June Manly, Gene Mahn, Maria Teti.

### Contributing Members

Larry Hansen, Derek Deedivano, James Madden, Wayne Lee Perry, David & Aiko Fadness, Charles E L Bradbury, Mrs Patricia Ann Lange.

### Life Members

Mr & Mrs William R Cahill, Dan & Suzanne Jensen, Wendell Jones, Lee J Flory.

### Participating Life Members

Jeffrey Lapham, Henry Hill, Ron & Carrie Witt.



Yosemite Association  
Post Office Box 230  
El Portal, CA 95318.

Address correction requested  
Forwarding and return postage guaranteed

Non-profit Organization  
U.S. POSTAGE  
PAID  
Yosemite Association

## Join the Yosemite Association

**You can help support** the work of the Yosemite Association by becoming a member. Revenues generated by the Association's activities are used to fund a variety of National Park Service programs in Yosemite. Not only does the Yosemite Association publish and sell literature and maps, it sponsors field seminars, the park's Art Activity Center, and the Ostrander Lake Ski Hut.

A critical element in the success of the Association is its membership. Individuals and families throughout the country have long supported the Yosemite Association through their dues and their personal commitments. Won't

you join us in our effort to make Yosemite an even better place?

### Member Benefits

As a member of the Yosemite Association, you will enjoy the following benefits:

★ *Yosemite*, the Association bulletin, published on a quarterly basis;

★ A 15% discount on all books, maps, posters, calendars and publications stocked for sale by the Association;

★ A 10% discount on most of the field seminars conducted by the Association in Yosemite National Park;

★ The opportunity to participate in the annual Members' Meeting held in the park each fall, along with other Association activities;

★ A Yosemite Association decal; and

★ Special membership gifts as follows:

*Supporting Members:* Matted print from an illustration by Jane Gyer in "Discovering Sierra Trees";

*Contributing Members:* Full color poster of Yosemite's wildflowers by Walter Sydoriak;

*Sustaining Members:* A colorful enameled pin depicting a Yosemite waterfall by William Spear;

*Life Member:* Matted color photograph by Howard Weamer of a Yosemite scene; and

*Participating Life Member:* Ansel Adams Special Edition print, achivally mounted.

Membership dues are tax-deductible as provided by law.

## Yosemite Association

### Board of Trustees

Thomas J Shephard  
*Chairman*  
William Alsop  
Beverly Barrick  
Barbara DeWitt  
Carlo S Fowler  
Edward C Hardy  
William J Popejoy  
Richard Reitnauer  
Lennie Roberts  
David Robertson  
Anne Schneider  
Phyllis Weber  
Daniel Wolfus  
Leonard W McKenzie  
*NPS Representative*  
John M Morehead  
*NPS Representative*  
Jeffery C Lapham  
*Ex officio*  
Elvira Nishkian  
*Ex officio*  
Richard C Otter  
*Ex officio*

### President

Steven F Medley

### Sales

Patricia Wight  
*Manager*  
Rose Laughter  
*Assistant*

### Seminar

**Coordinator**  
Penny Otwell

### Bookkeeper/ Office Manager

Claire Haley

### Membership Coordinators

Gail Pyle  
Holly Warner

### Secretary/Cashier

Sandy Halasz

### Consultant

Henry Berrey

## Please enroll me in the Yosemite Association as a . . .

- Regular Member \$20.00     Contributing Member \$50.00     Life Member \$500.00  
 Supporting Member \$35.00     Sustaining Member \$100.00     Participating Life Member \$1,000.00  
 Spouse add \$5.00

Name (please print):

Phone Number:

Address:

City:

State/Zip:

Enclosed is my check or money order for \$ \_\_\_\_\_, or charge to my credit card

Bankamericard/VISA: Number

Expiration Date

MasterCard:

Number

Expiration Date

Mail to:

Yosemite Association, Post Office Box 230, El Portal, CA 95318. 209/379-2646

### For Office Use

Paid:      Card #      Exp. Date:      Gift:      File:      Comp:

## Moving?

If you are moving, or have recently moved, don't forget to notify us. You are a valued member of the Association, and we'd like to keep in touch with you.

# YoseMite

is published quarterly for members of the Yosemite Association, edited by Steven P. Medley, and designed by Jon Goodchild/Triad. Copyright ©1989 Yosemite Association. Submission of manuscripts, photographs and other materials is welcomed.



Digitized by  
Yosemite Online Library

<http://www.yosemite.ca.us/library>

Dan Anderson