

Yosemite

A JOURNAL FOR MEMBERS OF THE
YOSEMITE ASSOCIATION

Spring 2003 Volume 65 Number 2

A Year for Yosemite Anniversaries



2002
**ANNUAL
REPORT
INSIDE**

A Message from the President

AS SPRING ARRIVES IN YOSEMITE, all of us at the Yosemite Association are hard at work preparing for our 80th anniversary. On August 4, 1923, the Yosemite Museum Association was created to raise funds to build the Yosemite Museum. Eventually that organization became the present-day Yosemite Association, which is proud to claim you and nearly 9,000 others as members.

We initiated our commemoration of the event with several programs at our Spring Forum in March. Our Vice President, Beth Pratt, developed an informative display about the association's history, I gave a slide program on the same topic, and we asked forum attendees to make donations to kick off our "80 for 80" campaign. We hope to raise at least \$80,000 in our 80th anniversary year, and we're recognizing everyone who makes a donation of \$80 or more with a beautiful, enameled 80th anniversary pin.



That pin features our newly-developed logo that calls attention to our 80th birthday. It was designed by Michael Osborne Design of San Francisco, and besides highlighting the dates that we've existed, it updates and modernizes the logo that we've been using without any real modification for several decades. We also plan to develop other products (t-shirts, mugs, and more) that feature the new logo.

This issue of *Yosemite* celebrates at least two Yosemite anniversaries. One hundred years ago President Theodore Roosevelt visited the park in the company of conservationist John Muir. Much to the consternation of his official hosts, Roosevelt skipped out on all the events and ceremonies scheduled for his visit, and escaped with Muir for three nights of camping. Yosemite backcountry ranger Gary Koy has written an article detailing the significance of the event, and we also include an account of the camping trip by the civilian ranger who accompanied the president.

We also call attention to our own 80th anniversary with an article about one of Yosemite's notable naturalists, Doug Hubbard, and a piece on the serendipitous backcountry meeting that led to the funding and creation of the Yosemite Museum. Watch for an extended history of the Yosemite Association in our next issue.

Folded inside this copy of *Yosemite* is an envelope that we encourage you to use to make an 80th anniversary donation to the Yosemite Association. Donors of \$80 or more will receive the enamel logo pin described above, and donors of \$1,000 and \$5,000 will be invited to a private anniversary barbeque in Yosemite Valley later in the year.

I send regards from everyone at the Yosemite Association, thanks for your continuing support of our work, and advance appreciation for your 80th anniversary gifts. May you enjoy many pleasant days in Yosemite this year.

Sincerely,

Steven P. Medley

P.S.: If you've got comments or ideas for our 80th anniversary, please e-mail me at smedley@yosemite.org.



THEODORE ROOSEVELT AND JOHN MUIR: 100 YEARS AGO AND TODAY

Exactly one century ago, President Theodore Roosevelt joined John Muir in Yosemite, and their meeting and discussions proved to be among the key events in the park's history. On May 15, 1903, the twenty-sixth president arrived by train in Raymond, California. Unknown to most residents, and the press in particular, Roosevelt would not be traveling with the main entourage to the Wawona Hotel and on to the comforts of the Jorgensen home in Yosemite Valley as was officially planned. Despite the welcome and fanfare organized to celebrate the arrival of President Roosevelt to Yosemite National Park, the president was looking for peace and quiet. Roosevelt wanted nothing more than to "outskirt and keep away from civilization."

At the Mariposa Grove the president left his entourage behind, including the secret service agents assigned to protect him. Roosevelt, John Muir, Rangers Charles Leidig and Archie Leonard, and packer Jacher Alder ventured off on a four-day trek. Roosevelt had made confidential arrangements with Muir: "I want to drop politics absolutely for four days and just be out in the open with you."

The first night out the party camped near the Mariposa Grove. The second night was spent at Glacier Point where the party was blessed with a spring snow. Perhaps less of a blessing was the group of photographers that met them at the point. On arriving in Yosemite Valley the next morning the president exclaimed "We slept in a snow storm last night! This has been the grandest day of my life." Roosevelt rejected an

offer of more plush accommodations and chose to camp in the west valley. With the help of Ranger Leidig, his privacy was maintained and the solitude he sought secured. On May 18, the president rejoined his entourage, returned to his train in Raymond, and re-entered the world of politics.

What Muir and Roosevelt talked about is, for the most part, unknown. What is certain is that they talked for hours on end. Clearly Muir wanted to talk about preserving the sequoias and returning the Mariposa Grove of Big Trees and Yosemite Valley to the federal government as part of Yosemite National Park. Roosevelt talked of his hunting exploits and his interest in natural history. Perhaps most revealing was Leidig's observation that "there was some difficulty in their campfire conversation because both men wanted to do the talking."

One hundred years later it is interesting to ponder the significance of this event. To be sure, Theodore Roosevelt was the first sitting president to visit Yosemite. And it is clear that John Muir argued for making the Mariposa Grove and Yosemite Valley part of the greater Yosemite National Park (which recession was accepted by the federal government in 1906). But there is more to the story.

In 1903 the American frontier had just been "conquered," if only for thirteen years. The great herds of bison had been reduced from 60 million to 39. In the Northeast, huge stands of white pine had been decimated. On the Great Plains the open range had been destroyed through overgrazing. Railroads criss-crossed the continent. With increasing industrialization, America's incredible natural wealth was being spent at an ever-increasing rate. The frontier was dead, but the frontier notion of inexhaustible resources was alive and well.

Theodore Roosevelt had seen the degradation of the country's natural resources first hand and had often spoken for the wise use of nature's bounty. It would not go unnoticed by the American public or by business and social leaders that the president of the United States devoted four days to talking and camping with a renowned naturalist.

Many believe that this was a critical juncture in the birth of an environmental movement that continues to this day. Yosemite historian Carl P. Russell wrote that during the trip with Roosevelt, "conservation matters were discussed by Muir and the legislation which was to become famous as the Antiquities Act of 1906 was given some definition at this time." This legislation was not enacted immediately following Muir and Roosevelt's



Cover: President Theodore Roosevelt and John Muir at Glacier Point on May 16, 1903. This and all photos of Roosevelt courtesy of the Yosemite Research Library.



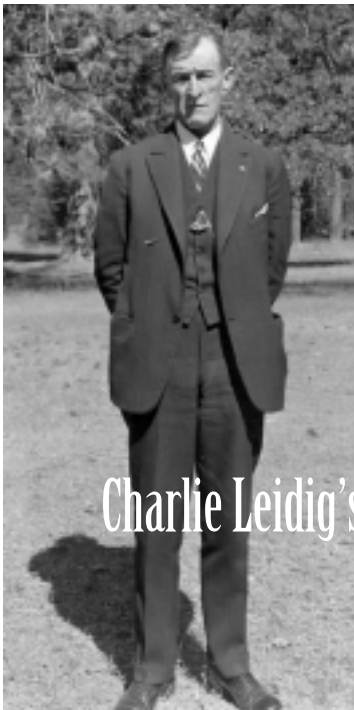
Roosevelt greets Willetta Hill and Estella Washburn at Hill's Studio in Wawona.

time together, but when it was, it proved to be a critical building block in American conservation.

While not creating a single park itself, the Antiquities Act enabled Roosevelt and his successors to proclaim “historic landmarks, historic or prehistoric structures, and other objects of historic or scientific interest” in federal ownership as national monuments. Over the years, this act has served as an important presidential tool and has been used to save many of America’s most valuable wild places. The development of the Antiquities Act is perhaps the greatest significance of those four days in May of 1903, when Muir and Roosevelt paused to think about us and those who will come after us.

How much influence John Muir exerted on Theodore Roosevelt is a matter of conjecture, but Roosevelt’s conservation record is remarkable. As the first modern activist president, Roosevelt signed legislation creating five national parks, eighteen national monuments, 150 national forests, and the first 55 federal bird sanctuaries

and wildlife refuges (the beginnings of what is now the U.S. Fish and Wildlife Service). He helped established the U.S. Forest Service and signed the Antiquities Act. What’s most impressive is that during Roosevelt’s administration, a total of



Charlie Leidig’s Report of President Roosevelt’s Visit to Yosemite in May, 1903

Editor’s note: The following account was provided by Charles Leidig, one of the civilian rangers to accompany Theodore Roosevelt during his 1903 visit. His recollections were recorded and filed in the Yosemite Research Library, which kindly supplied us a copy.

Charlie Leidig stated that John Muir and Abner Mann, who had a travel office at the Palace Hotel in San Francisco for the Yosemite Stage and Turnpike Co, arranged that Archie Leonard and he were to be guides and escorts for Theodore Roosevelt. Muir came from San Francisco on the train with the presidential party of eight, including Governor George C. Pardee of California, Benjamin Ide Wheeler, president of the University of California, and Roosevelt’s personal secretary Mr. Loeb. The group was placed in an eleven-pas-

some 230 million acres of public land was protected.

In 1913, Roosevelt wrote: “The civilized people of today look back with horror at their mediaeval ancestors who wantonly destroyed great works of art, or sat slothfully by while they were destroyed. We have passed that stage. We treasure pictures and sculptures. We regard Attic temples and Roman triumphal arches and Gothic cathedrals as of priceless value. But we are, as a whole, still in that low state of civilization where we do not understand that it is also vandalism wantonly to destroy or to permit the destruction of what is beautiful in nature, whether it be a cliff, a forest, or a species of mammal or bird. Here in the United States we turn our rivers and streams into sewers and dumping-grounds, we pollute the air, we destroy forests, and exterminate fishes, birds and mammals—not to speak of vulgarizing charming landscapes with hideous advertisements. But at last it looks as if our people were awakening.”

Today Americans can awaken and experience much of the wild beauty that John Muir and Theodore Roosevelt worked so hard to protect 100 years ago. These two leaders did their best to see that what was beautiful in nature was not vandalized while we slept. Will Americans in 2103 be able to look back at us and say the same thing?

Gary Koy is a backcountry ranger in Yosemite, where he oversees the Wilderness Center, the permit reservation system, and the bear canister rental program.

senger coach of which Bright Gulispse was the driver. Under Lieutenant Mays, thirty cavalymen escorted this stage from Raymond directly to the Grizzly Giant in the Mariposa Grove. There, the party was photographed especially by Underwood and Underwood. Leidig and Leonard were not in the picture.

After some preliminaries, President Roosevelt dismissed the troops, thanking them for their services and calling out after them as they departed, “God bless you.” The stage departed with all members of the president’s party, except Mr. Roosevelt, John Muir, Charlie Leidig, Archie Leonard, and an Army packer named Jacher Alder.

The president said to Charlie Leidig, “Leidig, please do not let anybody disturb me, because I am tired and want rest and sleep.” Charlie did the cooking. He said they had fried chicken and beefsteak for supper that night. The president drank strong, black coffee and went to bed early under the Grizzly Giant. The only cover provided for the president was a “shelter half” under which about

forty blankets were piled to serve as a bed. The president got just as deep into these as he wanted for warmth and comfort. Four mules were used to haul this gear.

On May 16, 1903, the group broke camp at the Mariposa Grove and were on horses by 6:30 a.m. The president directed Leidig to “outskirt and keep away from civilization.” Leidig led the party down the Lightning Trail. They crossed the South Fork at Greeley’s and hit the Empire Meadows Trail. They especially avoided approaching the Wawona Hotel for fear the president would be brought in contact with members of his own official party, which had remained for the night in Wawona. They had a cold lunch on the ridge east of



Above: Roosevelt arrives by stage at the Wawona Hotel.

Right: The presidential party poses before the Grizzly Giant in the Mariposa Grove. From left, two Secret Service agents; Secretary of the Navy William H. Moody; California Governor George Pardee; Roosevelt, Surgeon General Dr. Presley N. Rixie; Muir; Columbia University President Nicholas Murray Butler; Roosevelt’s private secretary William Loeb, Jr.; and University of California President Benjamin Ide Wheeler.



Empire Meadows. There was lots of snow as they crossed towards Sentinel Dome; they took turns breaking trail through deep snow. In the Bridalveil Meadows the party plowed through five feet of snow. The president mired down, and Charlie had to get a log to get him out. It was snowing hard and the wind was blowing.

Muir proposed that they camp on the ridge just back of Sentinel Dome. Leidig’s suggestion, however, that they travel down to the approximate location of existing campgrounds at Glacier Point, where water and better camping conditions in May could be found, prevailed. It snowed five inches during that night and everything was frozen in the morning.

Leidig remembered that around the campfire that night Roosevelt and Muir talked far into the night regarding Muir’s glacial theory of the formation of Yosemite Valley. They talked a great deal about the conservation of forests in general and Yosemite in particular, and discussed the setting aside of other areas in the United States for park purposes. Leidig recounted that during the trip Muir seemed to bother the president by picking twigs for Roosevelt’s buttonhole. He noted that some difficulty was encountered because both men wanted to do the talking.

On the morning of May 16, the party went down to Glacier Point for pictures that had been prearranged. As they left Glacier Point, the president rode in front followed by Leidig, Leonard, Muir, and the packer. They



President Roosevelt rides through Yosemite Valley with John Muir at his right and Charlie Leidig directly behind him. Note the rifle slung across Leidig's saddle.

were all dressed in civilian attire. The rangers wore blue overalls, chaps, and spurs. They rode into Little Yosemite Valley for lunch, where they encountered a considerable crowd of valley visitors, since it had been widely advertised in the papers that the president was visiting the park.

Leidig observed that many times during the trip President Roosevelt demonstrated his great love for birds by whistling, and the birds, many of which he was able to identify, would answer him.

There was considerable disagreement in the matter of plans for the presidential visit. Roosevelt wanted a roughing trip, and through Pardee, Wheeler, and Muir, such a trip had been worked out. On the other hand, John Stevens, Guardian of the Yosemite Grant under state administration, and certain of the commissioners, especially Jack Wilson of San Francisco, had made plans for a large celebration. The Chris Jorgensen studio home

had been set aside for the president's official use. A cook had been engaged from one of the best hotels in San Francisco to serve a banquet. The commissioners had arranged a considerable display of fireworks, which John Degan claimed amounted to some \$1,800 worth. Degan said he was to have had some part in touching this off for the president's benefit.

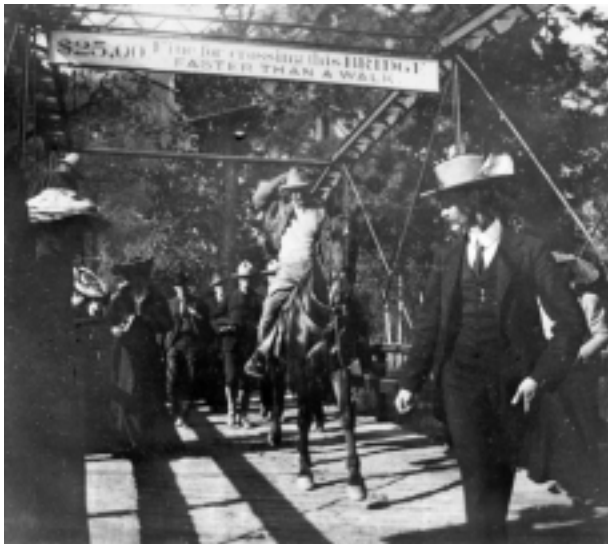
So there were a number of people awaiting the president at the top of Nevada Falls and in Little Yosemite Valley. Roosevelt requested that everyone be kept at a distance in order that he could carry out his desire for a "roughing trip;" accordingly the collected crowd was kept away from the presidential party.

When the group reached Camp Curry at 2 p.m., they found a big crowd of women in front of the camp. They had formed a big line across the road in an attempt to stop the president. They all wanted to shake hands with

him. Leidig was riding second in line carrying a Winchester rifle and six-shooter. His horse was a high-spirited animal. Roosevelt said, "I am very much annoyed, couldn't you do something?" Leidig replied, "Follow me." He gave spurs to his horse, and as he reared, women fell apart and the president's party went through the gap. Roosevelt waved his hat to the group as he headed off down the road.

At Sentinel Bridge, the guardian of the valley and some of the commissioners assembled with members of the presidential party to meet Roosevelt. The president dismounted, clearly tired, and Charlie Leidig stood by his horse. The official party escorted him to Chris Jorgensen's studio, where they all remained for fifteen minutes. Roosevelt went in and looked at Jorgensen's paintings, and the artist served him a glass of champagne. The president thanked the Jorgensens for their courtesy in offering their home and apologized for not accepting.

Accompanied by five or six members of his party, Roosevelt walked back across the Sentinel Bridge to his horse. Muir had joined the president at the Jorgensen studio. The original party of five mounted their horses and started down the valley to pick a camp site near Bridalveil Fall, where Muir had suggested they spend the last night in camp. As they left the bridge, the president saw Ellen Boysen standing by her mother on the ground holding a flag. He reached down, picked her up under her arms, and kissing her said, "God bless you, you little angel." Putting her down, he waved his party off and started down the valley.

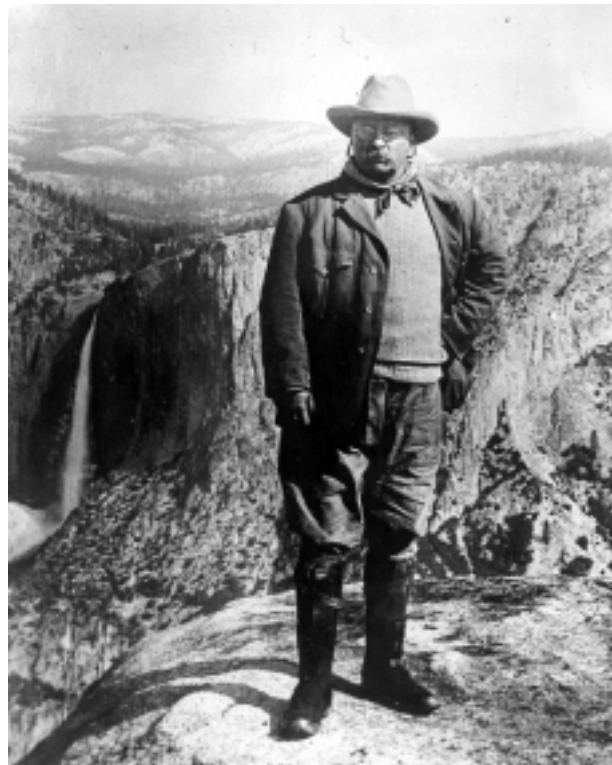


Charlie Leidig leads Roosevelt across a bridge in Yosemite Valley.

They went down the south side of the river followed by a big string of people on horseback, in buggies, in surries, and on foot. Leidig estimated that there must have been 300 or 500, or possibly 1,000 of them in the crowd, filling the Bridalveil Meadows. As they reached their camping places on a grassy slope just south of the present road through the meadow, the president said to Leidig, "These people annoy me. Can you get rid of them?" Leidig walked out and told the crowd that Roosevelt was very tired and asked them to leave. They went—some of them even on tiptoe, so as not to annoy their president.

When Leidig returned to the camp site, the president said, "Charlie, I am hungry as hell. Cook any damn thing you wish. How long will it take?" Leidig told him it would take about thirty minutes, so Roosevelt lay on his bed of blankets, went to sleep, and snored so loudly that Leidig could hear him even above the crackling of the campfire.

People came again in the morning. Crowds could be seen all through the brush. Leidig kept them away. The stage came down containing the president's official party. After breakfast, Roosevelt and Muir got into the stage, and as they left the president called Leidig and Leonard to him and said, "Boys, I am leaving you. Good-bye, and God bless you."



Roosevelt at Glacier Point in classic Underwood & Underwood photograph.

WHATEVER HAPPENED TO DOUG HUBBARD?

BY ALLAN SHIELDS



It is startling to realize that *Yosemite* readers younger than fifty years old are unlikely to know of Doug Hubbard's many contributions to Yosemite National Park, where he served from 1952 until 1966, most of that time as Chief Naturalist. From the Happy Isles Nature Center to the Pioneer Yosemite History Center, multiple park museum and educational programs in the park were created and influenced by this energetic and forward-thinking ranger.

Douglass Hopwood Hubbard is the son of well-educated parents; O. S. Hubbard served as the superintendent of Fresno, California, city schools from 1928-1937, and Margaret Hopwood Hubbard taught drama and home economics for many years. Doug graduated from Fresno's Roosevelt High School in 1935, attended Fresno State College from 1935-1937, then transferred to UC Berkeley, graduating in 1940 in zoology. In 1942, he completed his Master of Science degree at Agriculture

and Mechanical College, Texas, in wildlife management.

The Hubbard family made many trips to Yosemite, Sequoia, and other nearby wonderlands in the Sierra Nevada. Doug's first job in Yosemite was seasonal Museum Aide in the summer of 1936 (when he was barely nineteen years old) working under Chief Ranger-Naturalist Bert Harwell.

About the time Doug was completing his studies at Texas A & M,

he accepted a summer appointment as ranger-naturalist in Sequoia NP, where he immediately met Fran (Frances Jean) Christianson and almost as immediately became engaged to her. In the fall, Fran enrolled in Occidental College, while Doug entered the U. S. Border Patrol as an inspector. On October 17, 1942, they were married.

From the border patrol, Doug was commissioned as a Lieutenant (jg) in the U.S. Navy, serving active duty from

August 15, 1944, through June 10, 1946. His ship, the destroyer escort "Joseph E. Connolly," was off the coast of Japan when the war-ending atomic bomb was detonated.

From the border patrol, Doug transferred to permanent status with the National Park Service. His first position in a national park was as Chief Naturalist at Hawaii Volcanoes, where he worked from 1948 to 1952. In Hawaii, he established the Hawaii Volcanoes Natural History Association, comparable to the Yosemite Natural History Association, to gain public support, and designed and built an exemplary visitors' center. This experience whetted his appetite for his developing specialty: the conception, design, and execution of exhibits in visitor centers and museums in national parks.

The catalogue of Doug's achievements in Yosemite is a full one. Upon his arrival in 1952, he set to work on what would prove to be an impressive list of exhibits and projects. Perhaps the best known is the Pioneer Yosemite History Center in Wawona, which first opened in 1960. Thousands of visitors, perhaps millions, have enjoyed these rich cultural recreations of the nineteenth-century mountain life in Yosemite.

With great effort and dedication, original buildings (primarily cabins) were relocated from various sites in the park, arranged to comprise a kind of community, one which has been occupied seasonally by volunteer "pioneers" and actors pretending to be living in the nineteenth century, refusing to answer visitor questions out of their context. Over the years, they have baked fragrant bread in wood stoves, tended gardens and flocks of chickens, spun yarn on authentic spinning wheels, woven fabrics, and performed sundry other chores of daily life, exhibiting the quotidian experience of pioneer life.

Across the South Fork of the Merced, Doug assembled the impressive transportation exhibit of stage coaches, harnesses, etc., including a working blacksmith and wheelwright shop, the latter repairing spokes of stage coach wheels and sweating steel "tires" onto the wheels.

Before any of the above could be accomplished, Glenn Gordo, master craftsman and builder from Mariposa, engineered and wrestled the collapsing original covered bridge to the south side of the river, rebuilt it, then rolled it back into place. The stage coach ride behind a team of horses starting in the village, roaring and rattling across the covered bridge, around the Wawona Hotel grounds, and back, continues to be very popular. To this day, Doug is "most proud" of these accomplishments in Wawona.



Doug Hubbard at Hawaii Volcanoes NP with cannon ball from Kealakekua Bay.



Doug Hubbard was responsible for the development of the Pioneer Yosemite History Center in Wawona.

Doug recollected that moving the buildings was no easy chore: “Each of the buildings was a challenge. The log cabins had to be numbered, dismantled, dipped in [sodium] pentachlorophenol...and rebuilt. The stone jail had to be split in two and dragged up onto a trailer bedded with old tires. The Wells Fargo building was three feet too wide for the Wawona Tunnel, but Gordo realized that the main hall ran from front to back so he chainsawed three feet out and squeezed the building together. He set up a generator and strung lights all around it and one night after midnight we dragged it through the tunnel, scraping first on one side and then the other!” (Personal correspondence, Dec. 17, 2002.)

When the Fish and Game Commission of the State of California abandoned the Fish Hatchery building and ponds near Happy Isles, Yosemite was able to acquire the entire facility for a token dollar bill. Seizing this new educational opportunity, Doug went to work (with others) to design and install the highly-regarded nature-study center and exhibits. Retaining the pond and aquarium with resident fish was considered appropriate, so super fly-fisherman Glenn Gallison was dispatched to the high country to catch and race back with live golden trout. The ingenious hands-on exhibits, along with the spectacular, life-size photo-posters and wildlife drawings by fabled nature artist Bill Berry and others, cast a spell on young and old.

The list of accomplishments goes on. Doug shares credit with others for many team efforts, but his infamous, energetic leadership was the reason that most of the projects were completed. On his watch these improvements include renovation of the pioneer cemetery (near the Yosemite Museum), enhanced by a self-

guiding historical tour booklet written by Doug; placement of the Yosemite Chapel on the Historic American Buildings Survey list; new roadside vista plaques; greatly amplified color-slide and photo collection in the museum; an expanded program of articles by naturalists in the *Yosemite Nature Notes*; and development of the Yosemite Research Library and archives.

One project begun but never completed was the transportation exhibit at El Portal. Glenn (“he-can-do-anything!”) Gordo moved the old Bagby railroad station up the river to El Portal, where it now houses the Yosemite Association offices. The only steam locomotive used in Yosemite logging was relocated to tracks behind the Chevron Station.

Doug was especially proud of the live exhibit in the Yosemite Museum to demonstrate Native American basket making. Doug related: “One day, Julia Parker, mother of some of the little Indian kids who played with my kids came to me and told me that her children were troubled by the way television was showing American Indians as savages with no culture and did I know of something she could do to change this. After some thought, I asked her if she had considered doing basket weaving, an art that was almost completely lost. She liked the idea, spent many months locating, talking to, and learning from old basket weavers, gathering materials they told her to use, from the Sierra foothills to Mono Lake, then weaving [baskets] at the Yosemite Museum. She presented a basket to Queen Elizabeth, one to the Smithsonian, and one to me, which I recently gave back [to the museum].” Julia Parker hasn’t retired from her museum position yet.

Doug gives large credit to his wife of sixty years, Fran,

for much of his success. Often the entire Hubbard family participated together. For fourteen years, Doug and Fran (occasionally with their four children) were enthusiastic participants in the Bracebridge Dinner, the brainchild of their friend Ansel Adams.

Doug and Fran established their Awani Press in 1955, beginning with their first publication, *A Day with Tupi: An Indian Boy of Yosemite*, written by Fran. *Animal Friends of the Sierra*, also by Fran, followed. To this day, the Awani Press continues publishing occasional books, postcards, and museum documents in Texas.

Even with his many accomplishments, Doug did not escape criticism (or teasing). For example, the Pioneer Yosemite History Center at Wawona was dubbed “Doug’s Berry Farm” in mild derogation (a reference to the Southern California amusement park with a similar name). There had been good-natured fun poked at the furious activity that accompanied the project. What few knew was that Doug had been given a \$10,000 grant from the regional office of the NPS, but he had to “encumber” that amount before the end of the fiscal year, a period of just three months. He did. And Glenn Gordo did. And the regional office did. And Doug was glad. And on the seventh day he rested.

Other less popular developments under Doug’s administration included restrictions on parking and on

meadow walks; curtailment of the wildly popular nightly Fire Fall from Glacier Point; and cancellation of “dangerous” hikes in Tuolumne Meadows, including the famous three-day Mt. Lyell trip. In some instances Doug was simply implementing NPS policy (for example, the order from “on high” to utilize personnel with increased contact duties—read larger groups). The safer trip edict resulted from the fact that the federal government had been successfully sued for liability damages in a landmark tort claim.

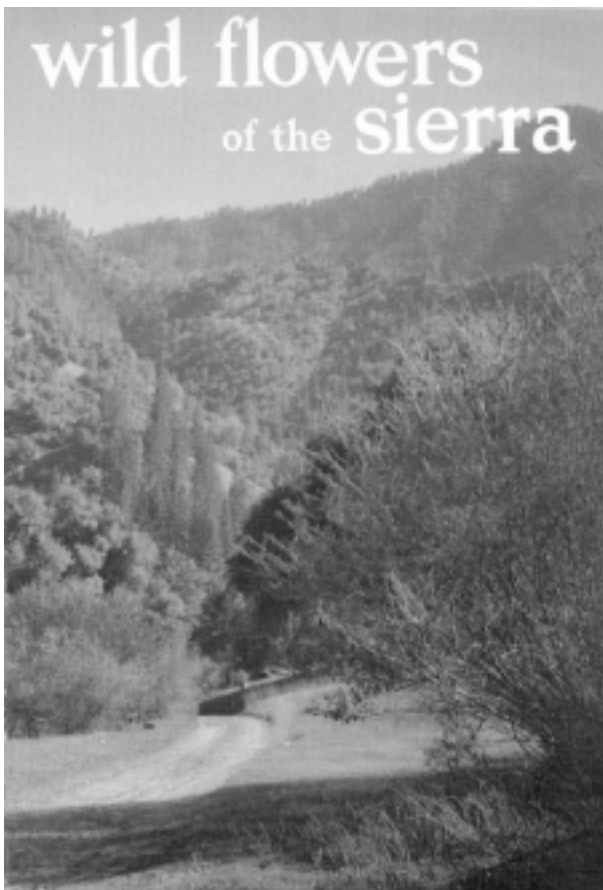
A further contribution of Doug Hubbard was as Chairman of the Working Committee at Yosemite for Mission 66. This was President Dwight Eisenhower’s ambitious service-wide program for major enhancements at national parks to be completed by 1966. The committee was charged with creating a prospectus of major improvements and renovations needed in Yosemite. The committee optimistically developed its list, only to be disappointed by the program’s outcome. Some of the recommendations were accomplished, but not by 1966. One Mission 66 success was the new Yosemite Valley Visitor Center, with auditoriums, exhibits, bookstore, information desk, and modern restrooms.

Doug was “called” to NPS Headquarters in Washington, D.C., in 1966, where he served with distinction as Chief of the Division of Interpretation and Visitor Services until 1969. From 1969-1970, his work brought increased responsibilities as Deputy Director of NPS Interpretive Planning. Detailed to Harper’s Ferry, West Virginia, he coordinated the construction and staffing of the Harper’s Ferry Design Center, then became its manager. He retired from that position in 1970 to begin a second career.

In 1968, Doug had been asked to assist President L. B. Johnson and wife Lady Bird in establishing two parks on the LBJ Ranch: The Lyndon B. Johnson Historical Park and the Lyndon B. Johnson National Historical Park. Following numerous trips commuting by jet between Washington and the LBJ Ranch, Doug became personally well acquainted with President Johnson and Lady Bird; his obvious talents and accomplishments became recognized by the Johnsons.

LBJ informed Doug that he had been trying to create some kind of memorial to honor Fleet Admiral Chester Nimitz, a Fredericksburg, Texas, native. Admiral Nimitz was a true hero of World War II in the eyes of millions of Americans—and especially in the eyes of LBJ. After many state occasions in the White House and on the LBJ Ranch, Doug was persuaded to resign from the NPS to assist the struggling Nimitz Museum project, which had been in process since the early 1960s.

Doug’s expertise in museum development, his Navy tour of duty in war time, and especially his native, diplo-



Hubbard authored this special issue of Yosemite Nature Notes during his time in Yosemite.



The Hubbard family in 1963 at Mirror Lake in Yosemite Valley.



Fran and Doug Hubbard receive a flowery greeting on one of the 60 cruises they've enjoyed.

matic gifts, made him the perfect candidate to direct the program of the Nimitz Museum. Over the years of growth, numerous public figures gave support: the L. B. Johnsons, Mrs. Nimitz, Bob Hope, Helen Hayes, Laurence Rockefeller, and many top-rank naval officers, including Japanese officers.

Once the exhibit space and grounds had expanded, Doug and many others traveled to Pearl Harbor, Hawaii, and the South Seas to retrieve WWII relics to enhance the museum. Museum materials poured in from many sources, making the collection grow exponentially with each passing year. The "Japanese Committee of Cooperation for the Nimitz Center" arranged for the gift of the Peace Garden on the museum grounds, a most welcome gift, one that necessitated three trips to Japan for Doug to make the complex arrangements, including bringing an entire Japanese construction team to build the garden to the exacting demands of the Japanese designers.

In 1983, the Nimitz Museum and Park were dedicated with a great parade, appropriate speeches by dignitaries, with proceedings masterfully directed (according to Lady Bird in a letter) by Doug. In later months, the museum provenance was extended to include more than a memorial to Admiral Nimitz, who had insisted that the memorial must be dedicated to all who served in the Pacific campaign. The program was expanded to cover the war in the Pacific, so that the name was changed to read, "The Museum of the Pacific War: Admiral Nimitz State Historical Park."

By 1985, more than fourteen years into his second career as museum designer-director, Doug felt ready to retire again, this time at age seventy-seven.

Doug and Fran have since literally embarked on a third career. They work as a lecturing team on cruise ships, each talk selected from nearly fifty carefully pre-

pared, slide-show topics. This continuing career has been very extensive, and is a continuation of their mutual, life-long dedication to educational ideals.

The Hubbards have presented programs on various cruise lines (Crystal, Cunard, and Holland America), with ports of call and destinations that have included England, Ireland, Scotland, Norway, Sweden, Mediterranean Sea ports, Greece, Turkey, West Indies, Alaska, South Sea Islands, South Africa, Great Wall of China (not a port), Australia, Fiji, Guadalcanal, Spain, Russia. Perhaps it would have been easier to list ports not visited! In January, 2003, they departed Texas to sail on the cruise ship, "Rotterdam," to ply the waters and those commodious locks of the Panama Canal for three more trips.

Having been gone from Yosemite for forty-six years, would Doug notice the changes in the park? Undoubtedly. But his enthusiasm for the place and its natural and historical resources wouldn't have diminished in the slightest. I have a feeling that if Doug were twenty years younger, say, a sexagenarian, he would plunge right into the mix of current Yosemite affairs, call the meeting to order, and get to work.

Editor's note: This article has been shortened from its original version, and an accompanying chronology has been omitted. The full article and chronology are available at the Yosemite Research Library, PO Box 577, Yosemite, CA 95389.

Allan Shields is a retired philosophy professor and a former naturalist at Yosemite. He now writes and publishes from his home in Clovis. He is a regular contributor to this journal.



A CHANCE ENCOUNTER, AN ASSOCIATION IS BORN

BY RALPH LEWIS



Editor's note: To aid the National Park Service and generate funds for the construction of the Yosemite Museum, Ansel Hall helped incorporate the Yosemite Museum Association in 1923. He had been hired as an "information ranger" in Yosemite in 1919. The NPS director at the time, Stephen T. Mather, was a strong proponent of museum developments in national parks, and encouraged the conversion of the old Jorgensen studio to a museum building in Yosemite. Hall was charged with outfitting this facility, which he did. Quickly realizing that the building was inadequate for the purpose to which it was being put (it was cramped and could not accommodate many visitors), Hall became a zealous advocate for the construction and occupation of a new Yosemite Museum. The following account describes the accidental meeting that led directly to the creation of the Yosemite Museum Association, the predecessor of today's Yosemite Association.

Ansel Hall became Yosemite's first park naturalist on July 1, 1921. The new title evidently did not carry with it an immediate workload of interpretation or supervision, for he soon left the park for a mountaineering expedition with his friend Francis P. Farquhar of the Sierra Club. On August 26 the two men became the first to reach the summit of the Middle Palisade in the Kings River region. Late the next day they

came upon and camped with Chauncey J. Hamlin and his party, who were working their way along an unfinished portion of the John Muir Trail.

The High Sierra encounter of Ansel Hall and Francis Farquhar with the Hamlin party may have been entirely fortuitous, although the party had apparently visited Yosemite briefly and met Hall en route to Sequoia. Hall and Farquhar evidently knew whose camp they were approaching. As Chauncey Hamlin remembered the occasion years later, he heard a voice calling out of the twilight, "Mr. Hamlin! Mr. Hamlin!" He then saw the two men coming toward the campfire. Hamlin did not recall that Hall expounded his hopes for a Yosemite museum better than the Jorgensen studio during their conversation that evening, but he opened doors and made an impression.¹ The nature of the man who in due course reacted to the impression is significant to the results.

Chauncey Jerome Hamlin, born in Buffalo in 1881, inherited adequate means to pursue his interests. At Yale he played football and won election to Phi Beta Kappa. Graduating in 1903, he studied law at Buffalo and was admitted to the bar in 1905. He went to the Mexican border with his National Guard regiment in 1916, rose to captain, and accompanied the regiment to France in 1918. Back in Buffalo in 1919 he decided that rather than reopen his law practice he would devote himself to some form of public service. His father-in-law, David Gray, had been a founder of the Buffalo Society of Natural Sciences, and Hamlin had served briefly on its board of managers before his mobilization. He resumed his seat, and the next year the society elected him president. He held the office 28 years during which he gave much of his time and some half-million dollars to the society's major undertaking, the Buffalo Museum of Science.²

Hamlin also became interested in parks. In 1920 he and his wife bought forty acres in the Giant Forest at Sequoia for donation to the park. If the Hamlins had not already met Stephen T. Mather, they soon did. Within a few months Director Mather paid a brief visit to Buffalo and declared the exhibits he saw in the society's museum "wonderfully informative."³ Mather also lent his support to the creation of Allegany State Park, in which Hamlin was deeply involved. The Buffalo Society of Natural Sciences published in its magazine articles by Mather and Farquhar on the proposed Sequoia-Roosevelt



Ansel Hall and Stephen T. Mather preside over the laying of the cornerstone for the Yosemite Museum. The event coincided with the dedication of the new park administration building (at rear) in November, 1924.



National Park Service Director Stephen T. Mather (l.) and Ansel Hall.

National Park, then made a nationwide distribution of reprints as a favor to the Park Service.⁴ Ansel Hall happened upon fertile ground well prepared for sowing the seed of his Yosemite Museum dream.

Hamlin did not forget about Yosemite's museum needs in the two years following his meeting with Hall. A personal matter took precedence, however. After the Hamlins' son graduated from preparatory school in 1923, his parents felt that he should travel extensively in Europe before entering college. They needed a suitable companion for him and picked Hall. Given a leave of absence from the Park Service, Hall left Yosemite at the end of August 1923 and did not return to the park until the following August. In his absence Hamlin marshaled support for the Yosemite museum project.⁵

Having become a member of the American Association of Museums in 1921, Hamlin found himself promptly made a vice president and chairman of the committee on association finances. Within two years he secured a matching grant that enabled the AAM to set up a permanent paid staff with offices in space offered rent-free by the Smithsonian Institution. After the association elected him its president in 1923, he had a strategic base for rallying supporters of museums in parks.

Association business took Hamlin to the offices of the Laura Spelman Rockefeller Memorial. While sitting with its director waiting for some papers to be fetched, he

spoke casually of Yosemite's museum needs. To his surprise the director expressed interest. Hamlin went straight back to Washington and set up an AAM Committee on Museums in National Parks, later called the Committee on Outdoor Education, with himself as chairman. Its membership included directors, curators, and scholars highly respected in the scientific world and the museum profession. The Park Service was to become particularly indebted to several of the members, including Hermon C. Bumpus, John C. Merriam, and Clark Wissler. The committee weighed the educational potential of the national parks "and developed certain concrete plans looking toward the establishment of small natural-history museums in a number of the larger parks."⁶

The AAM presented these proposals to the Laura Spelman Rockefeller Memorial and secured two grants [in 1924]. One in the amount of \$5,000 enabled the committee to continue its work. The other, for \$70,500, was designated to build and equip a museum for Yosemite as an experiment and example of the committee's ideas. [The Yosemite Museum Association was the recipient of the Rockefeller grant, and proceeded to construct the new facility.]

1. Letter, Ralph H. Lewis to Carl P. Russell, Sept. 10, 1949, Yavapai folder, Correspondence Files, Grand Canyon National Park.
2. Henry R. Howland, "Chauncey J. Hamlin," *Hobbies* 10, no. 1 (July 1929): 1-3; George F. Goodyear, "Chauncey Jerome Hamlin," *Science on the March* 44, no. 2 (December 1963): 23-24.
3. U.S. Department of the Interior, *Report of the Director of the National Park Service to the Secretary of the Interior for the Fiscal Year Ending June 30, 1920* (Washington: Government Printing Office, 1920), p. 50.
4. *Hobbies* 2, no. 3 (July 1921): back page; *ibid.* 2, no. 8 (January 1922): 3-16; *ibid.* 3, no. 2 (July 1922): 9; Francis P. Farquhar, "First Ascent of the Middle Palisade," *Sierra Club Bulletin* 11 (1922): 270.
5. Lewis to Russell, Sept. 10, 1949; letter, Hall to Farquhar, Oct. 25, 1926, folder 362, box 70, Carl P. Russell Papers, Washington State University Library.
6. *Report to the Director for 1924*, p. 8.

Ralph H. Lewis was the chief of the National Park Service Museum Branch from 1954 until he retired in 1971. He edited the NPS Field Manual for Museums and wrote much of the NPS Museum Handbook. This article is excerpted from *Museum Curatorship in the National Park Service, 1904–1982* by Ralph H. Lewis (Washington, DC, National Park Service Curatorial Services Division, 1993).

Annual Report

The year 2002 featured significant growth and improvement in many Yosemite Association programs—a nice change from down performances in 2000 and 2001. Among other accomplishments, we achieved our largest single-year increase in membership, adding 2,412 new members, and upped our sales by 7% overall.

Successful member and visitor events included the 2nd Annual Yosemite Winter Literary Conference, featuring poet Gary Snyder and other nationally-recognized writers, our annual Spring Forum, a day-long interpretive program that attracted 500 attendees, and a lecture about *An Illustrated Flora of Yosemite* at the Strybing Arboretum in San Francisco.

Our publications program featured several new posters and prints, a revised and updated edition of *The Complete Guidebook to Yosemite National Park*, and a limited edition, letterpress book. Several of our titles received “Interpretive Excellence” awards from the National Park Service at the Association of Partners for Public Lands convention, and our children’s book, *Antelope, Bison, Cougar*, won a “Gold” National Parenting Publications Award.

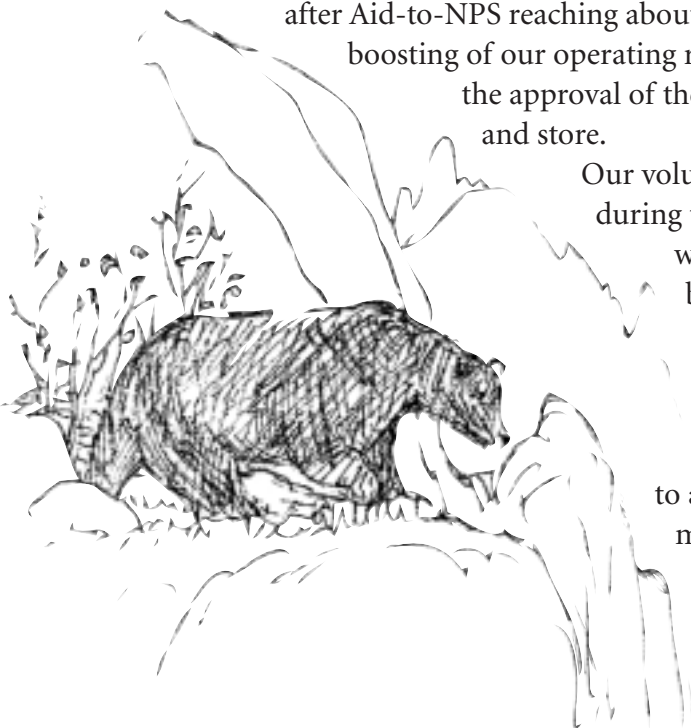
We also initiated a new electronic publication—a newsletter for members and supporters, eighteen issues of which were sent to a list that swelled to over 10,000 recipients. Our web site (www.yosemite.org) continued to grow in popularity and size.

2002 also brought an enhanced financial position for the association, with our net revenues after Aid-to-NPS reaching about \$100,000, a cash flow increase of over \$250,000, and the boosting of our operating reserve to \$250,000. Our future looks even brighter with the approval of the project for remodeling the main Visitor Center lobby and store.

Our volunteer programs contributed thousands of hours of labor during the year, including work trips and staffing of facilities, the wilderness reservation system continued to improve, and the bear canister rental program was more successful than ever. Members again proved very supportive, with donations to our annual appeal of over \$50,000.

It was good to experience so many positives during the past year, and the board and staff of YA send gratitude to all our members, supporters, partners, and friends who made it possible for us to accomplish what we did. We look forward to continued success in 2003.

Steven P. Medley
President



2002



BOARD AND STAFF

In the annual board election (that was held without balloting because there were no nominations by petition), incumbents Tom Shephard of Stockton and Bob Eckart of Mariposa were elected to new terms. Kimi Kodani Hill, a Berkeley-based graphic designer, author, and editor, was elected to replace William Alsup, who left the board after serving for fourteen years.

Ms. Hill, a long-time and active member of the association, became deeply involved with the organization during the production of *Obata's Yosemite*, the book that featured the art and writing of her grandfather, Chiura Obata. She since has served as editor for *Topaz Moon* and *Shades of California*, both published by Heyday Books. She lives with her husband Richard and son Anthony in Berkeley.

Mr. Alsup made numerous contributions to YA during his time on the board. He authored two books published by the association (*Such A Landscape!* and *Missing in the Minarets*), and involved himself in a variety of Yosemite issues and several YA committees. His participation and support over the years are much appreciated.

Early in the year, Bob Eckart resigned from the board following his decision to move to the Phoenix, Arizona, area. A board member since 1993, he served as Treasurer for much of his tenure and proved enormously helpful with financial and other association affairs. Thanks go out to Bob for his service that spanned nearly a decade.

Appointed to complete the vacant position was Suzanne Corkins, director of business development for a biotechnology company in Palo Alto. She and her husband Trey Pruitt are fervent hikers and backpackers, and we look forward to benefiting from their involvement with YA.

In another 2002 board change, veteran CEO of Yosemite Concession Services, Cindy Bower, was promoted to a new job within Delaware North Park Services. Her *ex officio* position was filled by Kevin Kelly, who was named to replace Ms. Bower as the head of the park's main concession company.

On the staff level, Mary Ann Corbaley, assistant sales manager, left the association. Chris Geis was hired to become the new administrative assistant for the office.



SALES AND PUBLICATIONS

In an encouraging change of direction, overall association sales grew by 7% during 2002; they had declined by the same percentage in 2001. The Yosemite Valley Visitor Center contributed sizably to this improvement, with sales up 11% over the previous year. Other good showings were made at the Wawona District Office (+15%) and the Tuolumne Meadows Visitor Center (+4%).

Sales at our various "member events" were impressive as well. Aggregate sales revenues from the Winter Literary Conference, the Spring Forum, and the annual Members Meeting grew from \$17,001 in 2001 to \$30,461 in 2002. Internet store and retail sales made through our warehouse exceeded budget by 11%, and our wholesale orders were 6% over the amount we budgeted.

Operationally, we curtailed our hours of operation at the Mariposa Grove Museum to cut personnel costs, and we decreased expenses at our Fresno Airport Store by utilizing volunteer sales and information clerks. Despite irregular hours necessitated by this change, sales in Fresno only decreased by 1%.

During the year YA published a revised and updated edition of *The Complete Guidebook to Yosemite National Park*, two limited edition fine art prints entitled "Wild Lupines" (from a painting by Walter Sydoriak) and "Two Bear Cubs with Blackberries" (from a painting by Daniel San Souci), and a limited edition, letter press book entitled *A Trip to the Yosemite*.

Several YA publications received "Interpretive Excellence" awards from the National Park Service at the APPL convention, including *An Illustrated Flora of Yosemite National Park*, and our children's book, *Antelope, Bison, Cougar*, won a "Gold" National Parenting Publications Award.

The "Yosemite Newsletter," a new e-mail publication, proved very successful, with some 10,000 sign-ups during the year. Eighteen issues of the electronic newsletter were mailed. Our web site (www.yosemite.org) was accessed by over one million unique visitors in 2002.

MEMBERSHIP

It was another record-setting year for attracting new members to the association. In 2002, YA welcomed 2,412 new members, ending the year with a total roster of 8,570 members. Lodging discounts at Yosemite Concession Services facilities and at the Redwoods in Yosemite guest cottages (in Wawona) were added to the list of membership benefits this year, and proved to be quite popular with our members. Nearly 2,000 members responded to our member survey, providing valuable information and suggestions that will help guide our organization's future.

Sixty-nine enthusiastic members volunteered on six different work trips during the fifteenth summer of the Cooperative Work Weeks program, assisting the NPS Resources Management Division with restoration, rare plant surveying, and exotic plant species eradication

projects in Yosemite Valley, the Happy Isles Fen, Elizabeth Lake, Upper Lyell Canyon, Wawona, the Mariposa Grove of Giant Sequoias, and El Portal. These hardy volunteers donated over 2,800 hours of labor to help preserve Yosemite. Program partners Yosemite Institute provided culinary services and naturalists to coordinate camp logistics, and Yosemite Concession Services Corporation provided a generous grant to help underwrite the expenses of this program.

Fifty-four knowledgeable and patient members volunteered for a month or longer in the park, answering visitor inquiries and promoting membership in the association. They donated more than 7,100 hours of service and recruited nearly twenty percent of the new members we welcomed this year. The Yosemite Museum Gallery, Happy Isles Nature Center, and Parsons Lodge were available for park visitors to enjoy only because of this crew's efforts. These volunteers also assisted thousands of people at busy information stations on the mall in Yosemite Village, in the Yurt at the Camp 6 (Day Use) parking lot, and in front of the Tuolumne Meadows Visitor Center.

Nearly 500 members braved wild "spring" weather and a minor rockslide near Cascade Dam to attend our annual Spring Forum in March in Yosemite Valley. A full roster of auditorium programs and interpretive walks addressed topics including Yosemite's bears, John Muir's last journey, dragonflies, an update from Park Superintendent Dave Mihalic, ecosleuthing, trailbuilding, Native Americans, the Ahwahnee Hotel's 75th anniversary, and much more.

Close to 300 members enjoyed the mild autumn weather at our twenty-seventh annual Members' Meeting at Wawona in September. Author James D. Houston shared his experiences writing about *Snow Mountain Passage*, a novel based on facts surrounding the Donner Party tragedy. Our silent and live auctions as well as the prize raffle were well-supported by our generous attendees. We are grateful for the assistance of Lunardi's Markets of the Bay Area in obtaining the fine wines we served at the reception following the meeting.

In response to a special year-end appeal, members donated more than \$51,000 to help offset rising costs and underwrite crucial expenditures to maintain and enhance our services and programs in Yosemite. We are most grateful for the significant support we receive through our members' contributions of time, talent, dues and donations, all of which are vital to the park and YA.

OUTDOOR ADVENTURES

The seminar program got a new look and a new name—Yosemite Outdoor Adventures—in 2002. Scenic photographs from Keith Walklet's book, *Yosemite: An Enduring Treasure*, were included in the catalog of fifty-one





courses. A number of new offerings helped to revitalize the program. In addition, we partnered with UC Berkeley extension to offer continuing education credits for some of our courses.

Participants joined ranger Dick Ewart for a day of learning map and compass skills in “Get Lost with a Ranger.” Julie Miller took an adventuresome group on three days of strenuous yet rewarding excursions in “Raft, Hike, and Bike Yosemite.” Students assisted Wildlife Biologist Kate McCurdy with important bear research in the park on “Bear Patrol,” and Stephen Botti, author of *An Illustrated Flora of Yosemite*, treated participants to a botany study in “Flora of the Tuolumne Meadows” backpack.

The Second Annual Yosemite Winter Literary Conference featured an impressive list of authors, scientists, artists, and park interpreters. Gary Synder joined artist Tom Killion in a presentation on their collaboration for the newly-released *The High Sierra of California*, while David Mas Masumoto delighted his audience with readings from his work and samples of his peach jelly. Other presenters included Pam Houston, Maxine Hong Kingston, Jane Hirshfield, and Francisco Alarcón.

The new courses, and a significant reduction in the catalog expense, helped to improve the performance of the Outdoor Adventure program for the year. Although the operation still ran a deficit of \$7,482 for the year, this was a considerable improvement over 2001’s net income of minus \$22,782 and 2000’s net income of minus \$32,420.

OSTRANDER SKI HUT

At the request of the National Park Service, YA oversaw the winter operation of the hut, which is used for backcountry skiers and snowshoers. Filling in as primary hut-keepers were Howard Weamer and George Durkee.

WILDERNESS CENTER

The Wilderness Center, a cooperative effort with the National Park Service, continued to serve as a valuable resource for park backcountry users. YA operated the park’s wilderness permit reservation center (as it has since 1988), and with YCS, further refined the bear canister rental program. The fee for the canisters was increased from \$3 to \$5 for a 14-day rental. For the first time, a full-time supervisor for the canister program was hired, and important improvements were made to this successful effort. As in previous years, generous donors to the program helped keep it effective.

ART ACTIVITY CENTER

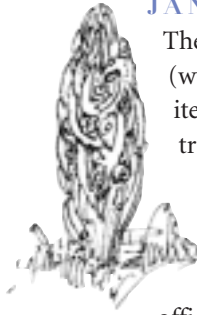
The Art Activity Center, co-sponsored by YA, YCS, and the NPS, operated for its twenty-first season. Visiting artists provided classes in drawing, sketching, painting, and other media from April through October.



The illustrations used with the annual report are by Jane Gyer and taken from the Yosemite Association’s 2002 publication entitled A Trip to the Yosemite by Caroline Van der Burgh.

Yosemite Highlights for 2002

JANUARY



The National Park Service web site (www.nps.gov), one of the most visited outdoor-travel sites in the country with 700,000 hits a day, was shut down for several months by a federal judge based on security breaches that compromised Native American trust funds. The official NPS Yosemite web page was a

victim of the shut down.

MARCH

Warren Harding, a rock climber best known for making the first ascent of El Capitan in 1958, died at age 77.

The National Park Service in Yosemite received final approval from the Department of Interior to begin the first phase of the implementation of the Yosemite Valley Plan.



A U.S. District Judge generally upheld the National Park Service's Merced River protection plan that had been under attack by several environmental groups. The judge did agree with challenges that contended the river plan had to conform to Yosemite's general management plan.

APRIL



The Cook's Meadow restoration project was completed by the National Park Service and the Yosemite Fund, with major funding from ChevronTexaco.

MAY

The Glacier Point Road opened May 17, and the Tioga Road opened on May 22.

Hoping to keep Sudden Oak Death out of Yosemite National Park, officials quarantined firewood, soil, and plants from counties where the disease had been found.

JULY

John Reynolds, director of the National Park Service's Pacific West region, retired. He oversaw the formulation and approval of the 1980 Yosemite General Management Plan.



AUGUST

Famed outdoor and Yosemite photographer Galen Rowell died with his wife Barbara in a plane crash. Rowell had contributed to Yosemite through a variety of park organizations, including the Yosemite Institute, the Yosemite Fund, and the Yosemite Association.

Park officials announced that encounters between bears and visitors to Yosemite National Park had increased after three years of sharp declines (329 incidents, up from 230 in 2001).

SEPTEMBER

Mike Tollefson was named to replace David Mihalic as Yosemite's Park Superintendent. Mihalic resigned from the National Park Service after being reassigned to Great Smoky Mountains National Park (Tollefson's previous duty station).

OCTOBER

The National Park Service entered a 15-year agreement with the American Indian Council of Mariposa County (partly made up of Southern Sierra Miwoks) to allow them to build an American Indian center and a traditional roundhouse on 7 acres in Yosemite Valley.



DECEMBER

Visitation to Yosemite for the year totaled 3,468,174, the lowest count since 1990.

STATEMENT OF FINANCIAL POSITION
FOR YEAR ENDING DECEMBER 31, 2002

ASSETS

Cash and Cash equivalents	\$493,441
Accounts receivable	111,408
Prepaid Expenses	30,335
Inventory	686,103
Property and equipment	71,411

TOTAL ASSETS **\$1,392,698**

LIABILITIES

Trade Accounts payable	\$13,905
Other accrued liabilities	18,216
Deferred revenues	43,877
Loan Payable	16,446
Royalties payable	42,564

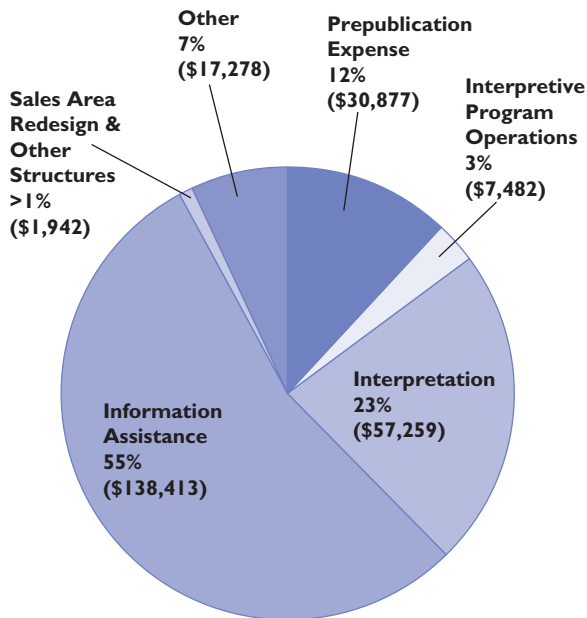
TOTAL LIABILITIES **135,008**

NET ASSETS

Unrestricted:	
Undesignated	805,318
Temporarily restricted	202,372
Contingency reserve	250,000

TOTAL NET ASSETS **1,257,690**

TOTAL LIABILITIES AND NET ASSETS **\$1,392,698**



2002 TOTAL AID TO NPS: \$253,251

Includes all reportable items from operations

STATEMENT OF ACTIVITIES, 2002

REVENUE, GAINS AND OTHER SUPPORT:

Contributions	\$149,570
Auxiliary Activities	\$85,003
Publication Sales	1,635,166
Outdoor Adventures	180,787
Memberships	414,300
Investment Income	636
Other Income	5,182
Wilderness Programs	192,825
Designated programs	1,048

TOTAL REVENUES, GAINS, AND OTHER SUPPORT **2,664,517**

EXPENSES

Cost of Sales:	
Publication costs	1,414,116
Auxiliary activities:	
Outdoor Adventures	189,464
Wilderness Center	115,476
Supporting services:	
Management and general	310,488
Membership	276,008
Aid to National Park Service	219,235
	2,524,787

INCREASE IN UNRESTRICTED NET ASSETS **101,156**

TEMPORARILY RESTRICTED NET ASSETS

Contributions	20,745
Auxiliary activities	85,003
Designated Programs	1,048
Net assets released from restrictions	
Restrictions satisfied by payments	(63,774)
Expiration of time restrictions	(4,448)

INCREASE IN TEMPORARILY RESTRICTED NET ASSETS **38,574**

INCREASE IN NET ASSETS **163,798**

NET ASSETS, AT BEGINNING OF YEAR **1,117,960**

NET ASSETS, AT END OF YEAR **\$1,257,690**

Friends of the Association, 2002

The following fine people and companies made generous contributions of their time, money, or energy during 2002. We extend heartfelt thanks to them and the many other wonderful people both inside and outside the park who help us in countless ways.

Marty Acree, Deane Adams, Jeanne & Michael Adams, Adobe Corporation, Kathy Aguilar, Francisco Alarcón, Bill Alsup, American Alpine Club, The Ansel Adams Gallery, Sheila Arthur, Art Supplies Etcetera, Todd Atkins, Bob Afuldish, Laura Avedisian, Dyan Axenty, Gary Baier, June Bailey, Mike Baker, Paul Barney, Nevada Barr, Gerald & Janet Barton, Craig Bates, Joe Bayewitch, Charleen Beam, Ted Beedy, Sandy Bell Graphic Design, Kathy Bennett, Barbara Beroza, Tina Besa, Mike & Jan Bigelow, Carol Bjorgum, Mike Bonham, Tom Bopp, Tom Borchardt, Ray & RoxAnne Borean, Annette Bottaro-Walklet, Steve Botti, Barbara Boucke, Cindy Bower, Kevin Bowman, Laurel Boyers, Sandra Brown, Lucy Bunz, Bureau of Reclamation New Melones Visitor Center, Ginger Burley, Donald Burns, George Burns, Jim Burns, Barbara Cady, California Data Marketing, California Native Plant Society, Kevin Cann, Dan Card, Bonnie Carter, Hugh Carter, Missy Carter, Doug Castleman, Annette Catamec, Bruce, Linda, Nathan, William, and Jacob Champion, Karl Chang, Robert Chapla, Terry Chiu, Leonard Choate, Les Chow, John J. Clark, Norman Clayton, Wendy Cobb, Jim Cokas, Gerald Colligan, Deb Collins, Arnold & Carole Compolongo, Joan Conlan, Connie King Design, Raymond Connors, Deb Conway, Glenda Cook, Copernicus Software, Rick Corbaley, Suzanne Corkins, Trish Corto, Sean Costello, Patrick Coyle, Margaret Craig, Norma Craig, Glenn Crosby, Crown Printing, Corinne Cuneo, Kimberly Cunningham-Summerfield, Bill Currie, Nancy D'Amico, Mara Dale, Tom Darcy, Leigh Davenport, David and Lucile Packard Foundation, Dee Davis, Thomas DeForest, Tracy Deitschman, Mike & Jane DeLand, Tony DeMaio, Marie Denn, Lynne Dennis, Dennis Dettmer, Pat Devitt, Pete Devine, David Deyell, Joseph Diaz, Jean Dillingham, Melanie Doherty, Moira Donohoe, Gail Lynne Dreifus, Dumont Printing, George Durkee, Robert Dvorak, Linda Eade, Carol Earle, Larry & Susan Early, Bob Eckart, Jerry Edelbrock, Chris Edison, Marion & Bill Eggers, Brenda Ehmman, Margaret Eissler, El Portal Market, Candace & Chris Elder, Jon Else, Helen Emshoff, Donna Engleman, Thor Ericson, Jerry & Judy Ernest, William Ernst, Linda & Alan Estes, Don Evans, Marlene Everingham, Dick Ewart, Butch Farabee, Don Fay, Richard Felberg, Dr. Kathleen Ferguson, Virginia "Mother Duck" Ferguson, Claude Fiddler, Mark Fincher, Fred Fisher, Judy & Marshall Fisher, Kitty Fisher, Carolyn Fitz, Betsy Flack, Naomi Flint, Roger Folk, Tom Fong, Foothill Press, Dave Forgang, Phil Francis, Phil Frank, Fresno Bee, Fresno Yosemite International Airport, Friends of Ostrander, Andy Fristensky, Sue Fritzke, Tom Frost, Michael Frye, Russell Galipeau, Paul Gallez, Garcia Machine, Patti Garrity, Skip Gaynard, Johanna Gehres, Gifts-in-Kind International, Tom Goble, Victor Goldman, Al

Gonzales, Mary Lynne Gonzales, Barbara Good, Ron Good, Jeff Grandy, David Greskowiak, Marilyn Griswold, Jack & Jane Gyer, Nancy Hadlock, Karen Hales, Joyce Halley, Sonja Hamilton, Bob Hansen, Bob & Sue Hansen, Jack Hansen, Keith Hansen, Val Hardcastle, Ann Hardeman, John Harris, Larry Harris, Steve Harrison, Vicky Hartman, Gerald & Janice Haslam, Don Hedgepeth, Laura Henry, Jack Henshall, Hartwell Herring, Cindy Herskovic-Pavlicek, Jack Hicks, Highfield Foundation, Kimi Kodani Hill, Barry & Marie Hilton, Robert Hoffmann, Garth Holman, Dave Holmquist, Krista Holt, Arch Horst, Lynn Houser, James Houston, N. King Huber, Eric Huffman, Audrey Hulburd, Pat Hunter, Kristine Hutchinson, Stan Hutchinson, Impact, Ingram Books, Tom Jackson, Richard James, Valerie James, Les James Engraving, Andy Jecusco, Debbie Johnson, Judy Johnson, Mary Jane & Vern Johnson, Shelton Johnson, Hank Johnston, June Jones, Mark Jones, Michael Jones, Phil Jordan, Eric Juline, Paul Kagiwada, Randy Kahn, Steven Kahn, Jerry & Susan Kaplan, Roy Kautz, Richard Glenn Keator, Lois Keele, Kevin Kelly, Adrienne Kendall, Bridgett McGinnis Kerr, Richard Keyes, Jim Kingwell, Herb & Betsy Kinney, Mary Kline, Jim Klostergaard, Mona Knight, Bob Kolbrener, Gary Koy, Vance Kozik, Bill Krause, Chuck & Millie Krueger, Dennis Kruska, Ben Kudo, Jeff Lahr, Kathy Langley, Louis Lanzer, Joe Lattuada, Tana Leach, Ann Lee, Louisa Lee, Martha J. Lee, Gene Lew, Albert Liberato, Yun Lien, Julie Limberg, Fealing Lin, Sam Livermore, Evelyn Lobree Estate, Betty Mae Locke, Anne Longman, Denise Ludington, Tim Ludington, David Lukas, Lunardi's Markets of the Bay Area, Peggy Lyle, Ron Mackie, Macromedia, Inc., Burrel Maier, Joanne Mandel, David Margiott, Anne & Dillon Margis, Malcolm Margolin, Donn Marinovich, Sean Matthews, Jeff Maurer, Kate Mawdsley, Jim May, Pam McAdoo, John McClary, Bill McCluskey, Otis McCain, Ed McCormick, Jenny McCullough, Kate McCurdy, Alan McEwen, James McGrew, Ken & Patsy McKay, Len McKenzie, Skip McLaughlin, Jerry & Dianne McMahon, Linda McMillen, Rita McMurdy, Tom Medema, Joe & Lynn Medeiros, Dorothy Mendelson, Merrill Lynch, Jillian Metz, John Meyer, Carole & Lou Meylan, Sue & Jim Michael, Michael Osborne Design, Vince Miele, Dave Mihalic, Gail Miller, Julie Miller, Martha Miller, Barb Miranda, Bob Mitchell, Linda Mitchell, Modesto Bee, Mono Lake Committee, Peggy Moore, Chesley Moroz, Brooks Morgan, Russell Morimoto, John Mullen, Roxann Mulvey, Jim Murray, Lloyd & Susanna Murray, Dorothy Nakama, Marcelle Nance, Naturals From The Earth, Bill & Sadhna Neill, Neumiller & Beardslee, Jeff Nicholas, Terri Nishimura, Jeff Nixon, Oakhurst Frameworks, Ralph Occhipinti, Sheri Ogden, Mitch Okui, Carey Olson, Elizabeth O'Neill, Orange Tree Productions, Lisa Ordonez, Ron Oriti, Susan Ornelaz, Lois Orr, Michael Osborne, Mike Osborne, Penny Otwell, Elneta Owens, Greg Owens, Paradigm Help Desk, Julia Parker, Lucy Parker, Linda Patterson, Patti's Plum Puddings, Robert

Pavlik, Wayne & Donna Petersen, Randy Peterson, Deanna Petree, Clint Phelps, Jack Phinney, Marie Pitruzzello, Edward Polainer, Frank Poulsen, Tammie Power, Chuck Pribyl, Erin Purtell, Heidi Pusina, Taro Pusina, Sarah Rabkin, Leroy Radanovich, Evan Rapaport, James Raveret, Recycled String Band, Redwoods Guest Cottages, Michelle Regenbogen, REI, Pat Reilly, Jack & Gay Reineck, Laurel Rematore, Resort Gifts Unlimited, Inc., Anne Reynolds, Lee Riddell, Mike Roberts, Shana Robertson, Jean Roche, Jorma Rodieck, Roberta Rogers, Cyndi Rose, Gene Rose, Cathy Rose, Michael Ross, Louis Rowe, Galen Rowell, Randy Rust, Kristina Rylands, Hugh Sakols, San Francisco Chronicle, Bob San Souci, Dan San Souci, Shirley & Rick Sandbothe, Joan Sanderson, Bea Sandy, Shirley Sargent, Randy Sautner, Jan Schafir, Heather Schneider, Darlene Schuetz, Julie Schuller, Elizabeth Schultz, Don Schweizer, Scope Enterprises, Susan & Rich Seiling, Margareta Sequin, Julia Shen, Dean & Marla Shenk, Mary Beth Shenton, Allan Shields, Jill Sholly, Bill Shupper, Daryl Siegel, Sierra Press, Edith Simonson, Heidi Skiba, Doris Sloan, Brian Smith, Rick & Laurie Smith, Jim Snyder, Dan Sohn, Margo Sonderleiter, Star Dot Technologies, David Starkweather, Stauffer Publishing, Max Stauffer, Harry Steed, Margie Steigerwald, Chris Stein, Julie Stewart, Tom Stienstra, Georgia Stigall, Shad Stites, Bill & Mary Kay Stoehr, Leslie Stone, John Stovall, Ruth & Roger Strange, Lisa Strong-Aufhauser, Jackie Stroud, Strybing Arboretum, Summit Business Forms, George & Mary Sutliff, John Swanson, Suzanne Swedo, Walter Sydoriak, Symantec Corporation, Gayle Takakjian-Gilbert, Laurel Talbot, Gina Tan, Tenaya Lodge, Carol Thenot, Anne Thierman, Linda Thomason, Steve Thompson, Michael Thornton, Al Thorpe, Three Forests Interpretive Association, Elena Torre, Trails Illustrated/National Geographic, Hung Tran, Elwynne Trepel, Susan Trimmingham, Noreen Trombley, Elvia Trujillo, Jeffrey Trust, Trust of Evelyn Webb Lobree, John Tsai, Elizabeth Tucker, USDA Forest Service - Grouland Ranger Station, John Van Vleet, Jan van Wagendonk, Chris Van Winkle, Beena Vaswani, George Vega, Linda Vorobik, Charles Waldman, Keith Walklet/Quietworks, Theresa Ward, Holly Warner, Verle Waters, Ron Watson, Wawona Philharmonic, Howard Weamer, Jim Weeks, John Wehausen, Susanne Weil, Robin Weiss, John Weller, Mark Wellman, Lance Wellwood, Claudia Welsh, West Coast Imaging, Erik Westerlund, Percy Whatley, Heather Whitman, Steve Wright, Wilcher Associates, Libby Wilson, Margaret Wolcott, Marshall Woodgates, Dave Wyman, George Yenoki, Yosemite Concession Services Corporation, Yosemite Fund, Yosemite Institute, Yosemite Mountain Sugarpine Railroad, Yosemite Winter Club, Gil Young, Kathy Young, Jon Youngblood, Zellag the Dissolute, Jesus Zepeda, Zephyr Whitewater, Pat Zuccaro.

YCS Lodging Discount Program Changes

Effective immediately, the Yosemite Concession Services Corporation (YCS) lodging discount program has been converted to a coupon-based program. The 10% discount off standard lodging rates is now available seven days per week, instead of just weeknights, and includes the Ahwahnee Hotel, Yosemite Lodge, Curry Village, Wawona Hotel, and Tenaya Lodge in Fish Camp. Each one-time use coupon has a unique Personal Identification Number (PIN) that you provide when you call to make your reservation. When you check in, turn in your coupon and show your valid YA membership card to receive your discount. The YCS coupon is valid for rooms/lodging only, and is not applicable to lodging packages, special events, or any other discounted programs. Reservations must be made as a YA member ("Park Partner") in advance of your arrival.

As a bonus, higher level annually renewing memberships will receive more YCS discount coupons! Coupons are awarded according to the following schedule:

- Individual (\$30), Joint/Family (\$35), International (\$40), and Supporting (\$50) = 1 coupon per year
- Contributing (\$100) and Sustaining (\$250) = 2 coupons per year
- Patron (\$500) and Benefactor (\$1,000) = 3 coupons per year

We will mail YCS coupons to our annually renewing members with your membership card when you sign up or renew your membership. We will also mail 2 YCS coupons to our Life and Participating Life members each year in the spring.



Lodging Discount Program Expands!

We are pleased to announce the addition of several new partners offering lodging discounts to YA members! Participating properties now include:

10% off at selected lodging properties managed by Yosemite Concession Services Corporation (including the **Ahwahnee Hotel, Yosemite Lodge, Curry Village, Wawona Hotel, and Tenaya Lodge** (Fish Camp)). Get information about these facilities by calling the special reservation phone number on the one-time use coupon [see accompanying article for details], or on the internet at www.yosemitepark.com.

10% off at **Highland House Bed & Breakfast** in Mariposa. Call 209-966-3737 or 888-477-5089 or visit www.highlandhousebandb.com for information about this wonderful country B&B.

10% off at **The Redwoods in Yosemite**. Call 209-375-6666 or visit www.redwoodsinyosemite.com to learn more about their wide array of vacation home rentals in Wawona.

10% off at Yosemite Motels (including **Yosemite View Lodge** (El Portal), **Cedar Lodge** (El Portal), **Best Western Yosemite Way Station** (Mariposa), **Comfort Inn Mariposa**, and **Comfort Inn Oakhurst**. Call 800-321-5261 or visit www.yosemite-motels.com to learn more about these conveniently located facilities.

10% or more off at **Yosemite West Lodging** properties. Call 559-642-2211 or visit www.yosemitewestreservations.com for information about the many properties available in Yosemite West (off Highway 41 near the Glacier Point Road turnoff) and at Bass Lake. Ask about their special introductory rate of 15% off non-holiday reservations for stays between 9/1/03–3/31/04!

All discounts are available by advance reservation only; you must also show your valid YA membership card at check-in to receive the discount. Discounts are applicable to standard lodging rates. Other restrictions may apply; contact the lodging partners for details. We offer special thanks to all these lodging entities for these great new benefits!



Yosemite-Related Exhibition in Fresno

A new exhibition at the Fresno Metropolitan Museum should be of interest to YA members. "The Epic Landscape of California" features forty works (several with Yosemite subjects) in photograph, print and painting form, each depicting the majesty and power of California scenery. Artists and photographers represented in the exhibition include Ansel Adams, Albert Bierstadt, Sidney Tilden Daken, Maynard Dixon, Thomas Hill and Charles Reirson, among many others. Accompanying the show is an expanded array of Ansel Adams photographs. The exhibition will run through August 24; the Fresno Met is located at 1515 Van Ness Avenue, (559) 441-1444.

Do you have an existing reservation at the Ahwahnee, Yosemite Lodge, Curry Village, Wawona Hotel, or Tenaya Lodge, for a trip you will be making before you renew your YA membership? If so, send a self-addressed, stamped envelope bearing 37 cents postage to Yosemite Association, Attn: YCS Coupon, P.O. Box 230, El Portal, CA 95318, and we will mail you one coupon right away. Once you receive your coupon, call YCS back before your arrival and have the reservations associate enter the coupon PIN number into your reservation record. Then when you check in, turn in your coupon and show your current YA membership card to receive your discount.

Festive Spring Forum Includes a Taste of Sierra Foothill Wineries

Members who attended our March 29, 2003 Spring Forum in Yosemite Valley were treated to a fine spring day: sunny blue skies, swelling waterfalls, and red-bud blooming in the Merced River canyon. Nearly 500 people attended a variety of auditorium programs, which included a talk with the park's new superintendent, Mike Tollefson; fine photography with Mike Osborne; the making of *An Illustrated Flora of Yosemite National Park* with its author and primary illustrator; the 80-year history of YA; and a moving tribute to Galen and Barbara Rowell delivered by Galen's children, Nicole Rowell Ryan and Tony Rowell. Many also attended the 22 interpretive walks led by naturalists, enhancing their appreciation of the park's history, plants, lichens, oak trees, black bear research, climbing, writing, storytelling, photography, and Yosemite's Indians.

At the end of the day, attendees enjoyed light refreshments at the booksigning reception...along with a taste of the Sierra! Amador County Wine Grape Growers have been growing premium wine grapes in the historic gold country of the Sierra Foothills for over 140 years. This year, the Grape Growers' Association teamed with Amador County wineries to donate 8 cases of delicious wines for our reception. We are deeply grateful to these entities for helping us provide a perfect end to a perfect day:

Amador County Wine Grape Growers' Association
Amador Foothill Winery
Charles Spinetta Winery
Deaver Vineyards
Domaine de la Terre Rouge/
Easton Winery
Frenz Vineyards
Karly Winery
Shenandoah Vineyards
Sobon Estate
Sonora Winery & Port Works
Story Winery
Van der Vijver Estate
Villa Toscano Winery
Vino Noceto Winery

If you'd like another Taste of the Sierra, consider attending the Amador County Wine Festival on June 28, 2003, in Plymouth, California (on Highway 49 between Highways 88 and 50). For more information about this festival and other events, contact the Amador County Wine Grape Growers' Association, Inc. at P.O. Box 178, Plymouth, CA 95669, 209-245-4910, or visit www.AmadorWineGrapes.com. ACWG-GAI is a nonprofit organization promoting viticulture in Amador County, providing funding for scholarships, literacy, and agricultural education. For information about the wineries and tasting rooms in Amador County, contact the Amador Vintners Association, P.O. Box 667, Plymouth, CA 95669, 209-267-2297, or visit www.amadorwine.com.



Ray Ryan (at right), president of the Amador County Wine Grape Growers' Association, introduces Spring Forum attendees to fine wines of the Sierra foothills.

Leaving a Yosemite Legacy

Since 1923, thousands of individuals and families have helped the Yosemite Association undertake its important educational, scientific, and research programs, with gifts of time, services, and money. Each year we receive critical support for Yosemite in the form of charitable bequests from wills and estate plans. Such bequests play a vital role in our future funding.

We encourage you to consider including a gift to the Yosemite Association in your will or estate plan. It's a way to ensure that others will enjoy Yosemite far beyond your lifetime.

For information about leaving a Yosemite legacy, call (209) 379-2317, or write to P.O. Box 230, El Portal, CA 95318

YA Benefits from Your Online Shopping

Help the Yosemite Association when you shop online. Access your favorite merchants, like Barnes & Noble and Lands End, through www.yosemite.greatergood.com and 5% or more of your purchase will go directly to YA at no extra cost to you.

GreaterGood.com
Shop where it matters.

Association Dates

August 4, 2003

Yosemite Association 80th Anniversary!

September 13, 2003

28th Annual Members' Meeting,
Tuolumne Meadows

March 27, 2004

Spring Forum, Yosemite Valley (make your own YCS lodging reservation anytime after March 26, 2003)

Member Info Line 209/379-2317

If you're planning a trip to Yosemite and have questions, give our phone line a call between the hours of 9:00 a.m. and 4:30 p.m. Monday through Friday. We don't make reservations, but we can give appropriate phone numbers and usually lots of helpful advice.

YOSEMITE CATALOG



**Yosemite Once Removed—
Portraits of the Backcountry**
with photographs by Claude Fiddler, and
essays by Steve Roper, Nancy Fiddler, John
Hart, Anne Macquarie, and Doug Robinson.
The Yosemite Association's newest title is a
stunning series of photographs by skilled
Sierra photographer Claude Fiddler that
are paired with essays that focus on the
territory beyond the roads and beaten
paths of Yosemite written by a group of
veteran Yosemite mountaineers.

Most books about the park place a spotlight on Yosemite Valley with its granite cliffs and waterfalls, and icons such as El Capitan, Half Dome, and Bridalveil Fall. But the site of these famous landmarks is only seven square miles in size—and makes up just a tiny fraction of the park's area. This work is about the greater Yosemite National Park, with a wilderness area that comprises more than 94% of its nearly 1,200 square miles. It is an undefiled, primordial landscape that remains the same generation after generation.

These remarkable photographs and engaging essays will take readers to this marvelous region, far above much-visited Yosemite Valley. That extraordinary valley, visited by queens and presidents, has enjoyed its share of the spotlight. *Yosemite Once Removed* illuminates the Yosemite that queens and presidents never see.

Essay topics include a history of the Yosemite wilderness, a walk with a backcountry ranger, locating the most remote spot in the park, winter skiing over the Sierra crest, and exploring Tenaya Canyon. Claude Fiddler contributes nearly 50 large-format color photographs from all corners of Yosemite that took him some 20 years to complete.

Publication of the book is scheduled for May, 2003. The volume is 11.25 x 9.5 inches, illustrated in full color, and clothbound with a dust jacket. Copyright 2003, Yosemite Association. \$29.95; **member price \$25.46**



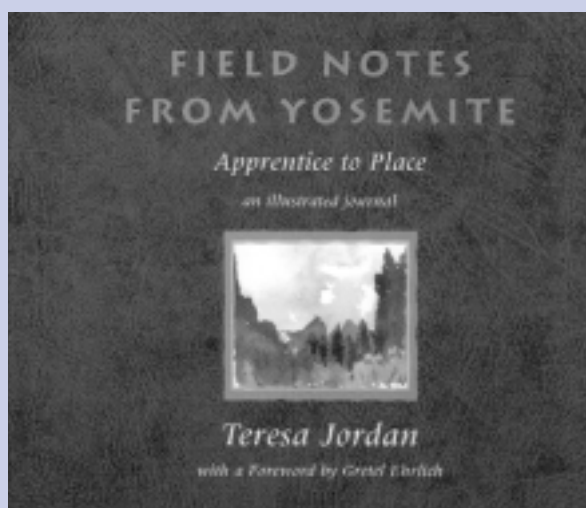
Field Notes from Yosemite—Apprentice to Place

by Teresa Jordan, with a foreword by Gretel Ehrlich.

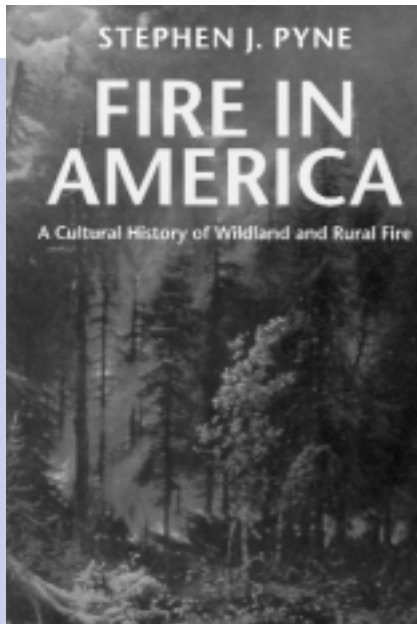
This intimate volume is in the form of an illustrated journal with luminous watercolor paintings and graceful essays capturing the beauty and spirit of Yosemite.

In her three essays, author and artist Teresa Jordan looks for answers to questions about the nature of wilderness, the risk we face of loving it to death, and what it can teach us about living more fully within our daily lives.

She uses the work of two previous students of Yosemite—naturalist John Muir and painter Chiura Obata—to inform her journal, while she interprets what the rocks, trees, and waterfalls communicate to her. Just as Muir and Obata utilized words, painting, and drawing, Jordan uses her own watercolors to illuminate her journey of exploration.



The book is 8 x 6 inches in size, 96 pages long, illustrated with full-color watercolor paintings, and paperbound. Copyright 2002, Johnson Books. \$16; **member price \$13.60**



Fire in America—A Cultural History of Wildland and Rural Fire

by Stephen J. Pyne.

Covering prehistory to the present-day conservation movement, this comprehensive work explores the efforts of successive American cultures to master wildfire and to use it to shape the landscape. The author tells us more than anyone before him about the role of fire in the landscape and what it has meant to the rise of civilization and this nation.

Described as “unusual and imaginative,” the work discusses the dynamic role that fire has played in the drama of American advance from frontier through agricultural to industrial society. By integrating the history of fire with ecology, agriculture, logging, and resource management, the author has made a unique contribution to the history of science and technology.

The *Journal of American History* writes that no one interested in environmental history can afford to ignore this massive achievement. The paperbound volume is 6 x 9.25 inches in size, 690 pages, and illustrated in black and white. Copyright 1982, University of Washington Press. \$24.95; **member price \$22.06**



Bench Mark and GNIS Paperweights for Glacier Point, Half Dome, and El Capitan

by SummitMark—GEOsitu.

These handsome new paperweights are in the form of the identification disks that are placed on landmarks in Yosemite. The paperweight for

Glacier Point is a facsimile of the actual U.S Geological Survey bench mark there, with its name and geographic information. There are no such bench marks on Half Dome and El Capitan, so these paperweights are designed with representations of these great rocks.

Each paperweight is artfully rendered in brushed pewter—beautifully cast and finely detailed—and packaged in a blue fleece stuff sack with colorful cord and cordlock. Information is provided about each location, including elevation and map coordinates.

That data is from the official United States data source on domestic geographic names, the Geographic Names Information System (GNIS).

The paperweights are 3.25 inches in diameter, made of cast pewter, weigh 6 to 7 ounces, and are packaged in a fleece bag. Copyright 2002, by GEOsitu. \$32.95; **member price \$28.01**

Pajaro Field Bag

This waist pack features seven pockets for everything you'll need when you're hiking or enjoying time in the outdoors. The main pocket is sized to accommodate field guides, travel books, or binoculars. There are smaller pockets (including one with a zipper) for note pads and maps, and specialized pockets for pencils, pens, and sunglasses. Best of all, a secret pocket sealed with Velcro keeps keys, credit cards, and other valuables safe.

It's the best such pack we've found.

Made in the U.S.A. of durable Cordura in navy blue, forest green, or black by Pajaro. (please specify color) \$29.95; **member price \$25.46**





**Audubon Birds
with Real Bird Calls**

by Wild Republic.

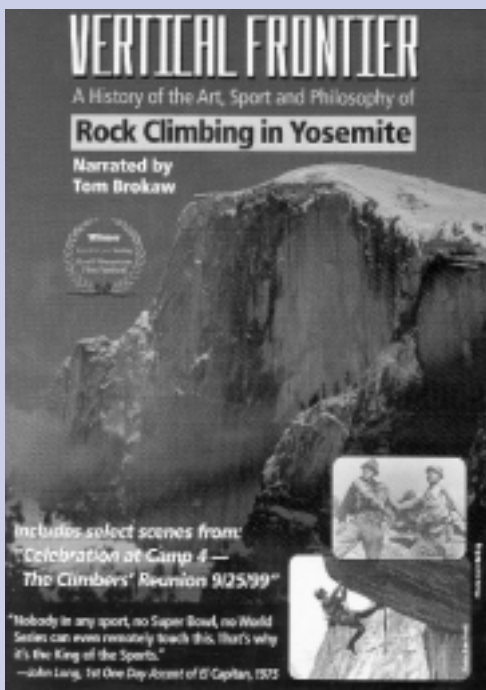
These are stuffed animal toys with a great educational component. When you squeeze each of the birds you hear its actual call recorded by the Cornell Laboratory of Ornithology. The designs and colors of the birds are realistic, and the sounds are authentic.

The plush birds are joint products of the National Audubon Society, the Cornell Lab of Ornithology, and Wild Republic. Each species comes with an educational hangtag with information on the bird, its migration, and its habitat.

Pictured species are the California Quail, the Western Tanager, the American Robin, and the Great Horned Owl. Additional species available (but not pictured) are the Red-tailed Hawk, the Peregrine Falcon, the Great Gray Owl, the Bald Eagle, and the Mallard.

The stuffed birds are five inches long and feature actual recorded calls.

Please specify your choice of species. \$9.95 each; **member price \$8.46 each**



Vertical Frontier—A History of the Art, Sport and Philosophy of Rock Climbing in Yosemite

by Kristi Denton Cohen/Peloton Productions; narrated by Tom Brokaw.

This new DVD tells the rich and compelling saga of the free-spirited climbers whose contributions to mountaineering techniques, equipment and ethics allowed them to be the first to conquer the legendary big walls of Yosemite.

Illustrated by spectacular old and new footage shot on those granite walls, the story is told by the climbers whose artistry and sheer determination allowed them to launch a sport now enjoyed by millions around the world.

Their ranks include David Brower, Warren Harding, Royal Robbins, Yvon Chouinard, Tom Frost, Jim Bridwell, Lynn Hill, and many more. Their epic endeavors range from the first siege ascent of El Capitan, which took 45 days spread over a year and a half, to today's speed climbers who conquer the same route in under three hours.

Winner of Best Film on Climbing Award at the Banff Mountain Film Festival.

DVD in plastic case; also in VHS video format; 90 minutes 30 seconds running time; color; copyright 2002, Peloton Productions. \$20; **member price \$17**

NEW COLORS AND LOGO NOW AVAILABLE!

Yosemite Association Water Bottle

by Nalgene

This highly functional wide-mouth Nalgene bottle made of super-tough, lexan polycarbonate is now available with the traditional Yosemite Association logo in four new colors: meadow green, honey yellow, violet, and glacier blue.

The bottles are virtually leak-proof, won't conduct heat or cold, and don't affect the taste of water or other liquids. You'll never lose their easy-to-open, attached, screw tops. Besides the YA logo, the bottles feature permanent gradation marks to make measuring powdered foods and drinks easy.

A bottle weighs 5.3 ounces including attached cap; from Nalgene. \$9.95; **member price: \$8.46**



Yosemite Association Mug

This distinctive and functional heavy ceramic mug feels good with your hand wrapped around it. Available in two colors (green or maroon), it's imprinted with our logo and name in black and white. Holds 12 ounces of your favorite beverage.

\$6.50 (please specify color); **member price \$5.53**



Yosemite Wilderness Pin

Here's a beautiful enamel pin commemorating Yosemite's unparalleled wilderness. It's circular in shape with a high country scene rendered in blues, grays, and greens. A real treasure for collectors. Approximately 1 inch in diameter. \$4.00; **member price \$3.40**



Yosemite Association Patch

Our Association logo is embroidered on colorful, sturdy fabric for placement on daypacks, shirts, blue jeans, jackets, or wherever! The patch is available in two attractive colors: dark blue and maroon. \$3.00 (please specify color); **member price \$2.55**



Limited quantities remain—order your patch today!

Yosemite Black Bear Stuffed Animal

This soft and fuzzy stuffed black bear (actually dark brown with a lighter muzzle) comes fitted with a yellow ear tag—just like those used by National Park Service rangers to research and track the bears in Yosemite.

The Yosemite black bear is part of an awareness program designed to educate the public so that bears will be roaming the Sierra Nevada for years to come. All proceeds from our sale of the stuffed bear will be donated to the program and aid Yosemite bears.

The yellow ear tag is a replica of those actually used in Yosemite, and securely affixed. Washable with warm water and mild soap, the cuddly bear is a great gift for children and bear lovers alike. Available in two sizes: large (14 inches from tail to snout) and small (10.5 inches). Large bear, \$14.95; **member price \$12.71**; small bear, \$9.95; **member price \$8.46**



Order Form

Credit card orders call: (209) 379-2648 Monday–Friday, 8:30am–4:30pm
We Accept VISA, Mastercard, American Express, and Discover

Qty.	Color	Description	Price Each	Total
1				
2				
3				
4				
5				

Name: _____
 Address: _____
 City: _____ State: _____ Zip: _____
 E-mail address: _____ Daytime telephone: _____
 Credit Card No: _____ Expires: _____
 Signature: _____

SUBTOTAL	
7.75% Sales Tax (CA customers only):	
Shipping Charges:	\$5.95
TOTAL ENCLOSED:	

SPRING 2003

Yosemite Association, P.O. Box 230, El Portal, CA 95318

NEW MEMBERS AND RECENT DONATIONS

NEW AND RENEWING MEMBERS

Welcome to our newest members, and thanks again to our renewing members! You and over 8,500 like-minded individuals, families, and businesses are helping the association make Yosemite an even better place.

Individual Members

Desne Ahlers, Brad Anderson, Gary Bocarde, Elizabeth Bramsen, Roy Buckner, Phil Campbell, Cathleen Carter, Bowman Ching, Phyllis Clawson, Susan Cook, Helen Davie, Julie Dettman, Patti Dewald, Gloria Diamond, David Edwards, Ronald Ehmke, Robert Elam, Sherri Eng, Arnold Engel, George Escobar, Peggy Fleming, Catherine Fritz, Steven Fuller, Kelli Garner, Philip Gasca, Thomas Gay, Rex Gettman, Dory Grade, Lisa Halton, Hattie Hanley, Jennifer Harris, Robyn Holland, Helen Hsu, John Hubchenko, Bonnie Hummel, Roger Johnson, Nancy Kendall, Mary Ann Kiely, David Kimes, Gary Knoblock, Terri Knowlton, Betsy Koerster, Terry Kramzar, Charles Lammers, Benjamin Langley, Marie LeMay, Marilyn Lemmon, Marlys Lynn, Archie Marston, Annette Mendoza, Sam Michelson, Larry Miller, Judy Molle, Gretchen Mominee, John Mott, David Mussatti, John Nowak, Jerry Nuding, Barbara Nyc, Alice O'Brien, Cary Odell, Tim Palzer, Neen Patterson, Peter Potamianos, Mary Rainski, Rose Reade, Damaras Reigel, Debbie Reiter, Jesse Rhoades, Gloria Rhodes, Kelly Rinehart, Alicia Rivera, Louise Roche, Anne Rosen, Roberta Rule, Bill Sandel, P. Schmalzel, Alan B. & Ruth W. Scott, Kandis Scott, Ian Smith, Christy Soldate, Cathy Stepanek, Joyce Stevens, Donald Troup, Jennifer Truitt, Linda Turkatte, Jim Viccaro, Melody Wall, Marty Wayne, Pamela Westmore, Connie J. White, George Whitmore, Anita Wickersham, Walter Wojtowicz, Helen Wong, Robert Zahl

Joint/Family Members

Nancy Alvarez, Richard Andrus, Jay Bachmayer, David & Willa Bass, Norm & Mary Benson, Perry Bonelli & Janice Johnson, The Bonham Family, Len & Arlene Borg, Jeremiah Bryant, Aimee Cabrera, Dan Cargill & Family, Rogelio Cavazos, Bonnie & Gary Cooper, David Cooper, Ellen Cosgrove & Jeffrey Fahl, Dan Downum, Daniel Eifert, Kathe Fairchild-Esty, Susan Farrell, Warren Ferrer, Guy Flemming, Michael Foster, Pamela Frank & Claudia Gear, Annette Frawley, Francis Geddry, Katherine Gold, Karl Griepenburg, Karl & Susan Guhm, Lucie Hamlyn, James Hannigan, Sandra Harper & Anne Hethcock, Karl Hauer, Steffanie Hochuli, Daniel Holmes, Carolyn & Allison Howell, Henry Howell & Family, Julian & Patricia Hultgren, Michael & Angie Ireland, Dean Jackson, Loren & Janet Johnson, Bruce Kalkowski & B-K Lighting, Cyndee Kendall & Robert Witthaus, Don & Nancy Kurtz, Alan Lamas, Joda & Albert Lang, Rebecca Lawlor & Family, John Lewis, Larry & Deirdre Lewis, Don MacSparran, Ronald Manne, Jan & Francis Mathews, Joe McAndrew & Lynda Frattaroli, Lucille & Kenneth McKenzie, Steve Meredith & Karen Glahn, Shirley & Dean Meyer, Andrea Milano & Vailey Oehlke, Doralene & Merrill Mitts, James & Martha Munn, Carol Murstens, Donna Ogilvie & Jeffrey Hartwell, Leslie Olrich Family, Lisa Ordonez & B. Swearingen, Nancy & James Osborn, Joan Parker, James Patton, Tom Pearson & Jessica Roberts, Suzanne Peltason, Barbara Perry, Linda & John Petersen, Sandra Peterson & C. Lyon, Calvin & Sharon Potter, Gabriel Prado, Joe & Marlene Prendergast, Alan Prince, Susan Rantuo, Douglas Raymond, Jon Richards & Kris Tanabe, Joseph Ripple, Allen Risley, Sandra Rivera, Sue Runyan & Doug Ross, Bernard & Louise Schroeder, Kurt Schulz & Marielle Goossens, Bob & Beth Segel, Joel Serface, John & Alichia Shumate, Samuella Sigmann, JoAnne Silva, Sharan Simkins, John & Karen Sivley, Marianne Skolzek & Paul Dorn, Bradford Smith, Pat & Betsy Smullen, Nancy Spittle & S. Johnson, Deborah Stewart, Terry & Ellen Stigall, Jacqueline Stipe, Corissa Stobing, Debbie & Ward Sutherland, The Swe Family, Matt, Yesi & Sierra Thomas, Bradley Thomas, Tim Tomson & Kathy Frank, Frank & Mary Ann Tortorich, Marc Violette, Mary & Derrick Vocolka, Michael Walker, Rodger & Barbara Ware, Donald S. Webber, Chuck Weber, Iris & Michael Weng, Sandra Whitfield, Chelsea Willhite, Sonya Yip & Karen Zotter, Michelle Yokoyama, Ron & Bette Young, David & Karen Yuen, David Zalikowski

Supporting Members

R. P. Allen, Larry Beck, William Blonkowski, Charles & Barbara Bocan, Anna-Marie Bratton, Alissa & Paul Burns, Victoria Collier, Gail Crouch, Davidmichael Doroliat, Elizabeth Dow, John Ducote & Ken Barnes, Dee & Sharon English, Patricia Fithian, Patrick Gallagher, Kandace Hawkinson, Ted Hoesman, Arch Horst, Kimberly Keck, Martha & Joe Kline, Philip Kurjan & Anne B ergo, Richard & Carrie Lipsey, William Mahoney, Kenneth Mastropalo, Henry McGee, John Milanich, Bill Romo, Melva Rush, Stephen Slobin, Harvey Strauss, George & Ruthann Tockstein, Mike Tollefson, Sue Vinella-Brusher, Lee & Sue Whitmer

Contributing Members

Ron Anderson, Richard Armstrong, Ed Ayre & Mary Ellen Shepherd, John & Kathi Griffen, Russell Li & Diane Reynolds, R. Sjhon Minners, Marina Mintz, Robert Pahlow, Mr. & Mrs. William Pierson, Janis L. Reh, Lynne Renner, Bob Ruggiero, Caroline Schimmel, Amy Schneckenburger & Mike Reynolds, Lalit Shahani, John Stubblefield

Sustaining Members

Peter Craycroft

Benefactor Members

Joseph Scalmanini, Michael & Linda Schneider

MEMBERS WHO HAVE RENEWED AT A HIGHER LEVEL

Special thanks go to the following members. By recently upgrading your membership level, you've enhanced our ability to provide key educational and other programs in Yosemite.

Supporting Members

Delores M. Bartholomew, Jean P. Bennett, Bruce & Georgia Boles, Shannon Bryant, Jeff & Joanne Chappell, Tom & Marge Collins, Robert F. Crooks, Nancy D'Amico, Jeff Dawkins, Celia Denues, Cheryl Duhme, Beth Fennell, Derek & Mari Fujikawa, M. Glagola & J. Radics-Glagola, Allen Glazner, Robert A. Haight, Nancy Hardwick, Jeanette Henry, H. & B. Hequeumbourg, Esther & Raymond Hickey, Grace Holland, Russell Hora, Chuck Keil & Kate Jackson, Mr. & Mrs. Henry Lefebvre, David Leibowitz & Katherine Young, Kirstie Lorelei Leslie, Albert Liberato, Mr. & Mrs. V. H. Lytton, Mr. & Mrs. Wm. Maggiora, Matthew Malchow & V. Tarango, Susan Margolis, Lin & Robert W. McGowan, Nathaniel McKitterick & J. Hanley, Mrs. Clark McQuay, Rich Meiklejohn, R. Middlecamp & M. Benz, Dr. & Mrs. H. Moffitt, Barbara Moritsch & Tom Nichols, Jan Paluh, Karen & Philip Rice, Debra Richard, Lynn Robertson & Billie Oglesby, Jean Roche, Eric Ross, Karen & Doug Rusk, Printess & Larry Schlist, R. Sciaroni & J. Finley, Jan Sinnicks, The Skillman/Roybal Family, Jack B. & Velma M. Snodgrass, Jean Staats, Linda Swope-Bahrs, Sylvia Tsang, Carolyn & Carl Wentworth, Tom & Betty West, James Williams, Jeanne Williams & Carol Adams, Glenn Williams, Kenneth Wurtemberg, Susan L. Yacuzzo, Sue Zaccaria

Contributing Members

E.T. Addicott, Jim & Mary Able, Timothy Bechtel, Wm. & Nancy Bittner, Don Brown, Raymond Burnham, Bernard Butcher, John Cahill, Hal Compton, Roy Conley & Rita Hart, Susan & Elaine Corwin, John DeStefano, James Erbes, Fred & Carrie Farmer, Mr. & Mrs. J.W. Fitzsimmons, Bob & Pat Flanders, Walter & Lynette Fong, R. Galipeau & M. Steigerwald, Lorrie Gervin, Melanie Griffin, Dick & Teresa Hagerty, Gregory Hensley, Joyce Hiller, Dirk Hoek, Kent Iverson, Ray Johnson, Mal Johnson, Edson Kerswill, Steve Kochis, Marsha & Al Korobkin, John LaLonde & Joyce Burel, Brad & Nancy Makowski, Drew McCalley, Linda McHarry, John & Patricia Miller, Brian Nafziger, Melinda & Wyatt Shook, Gary & Ariana Stauble, Gayle Takakjand-Gilbert, Mary Van de Houten, John Van Vleet, Mary Bell & Robert Weiner, Cameron Wolfe, Mr. & Mrs. Joseph Woods

Sustaining Members

Charles & Sandra Bangert, Susan Berland, Gregory J. Cleveland, David Graves, Chris Kane, Mr. & Mrs. Geo. Lauterstein

Patron Members

Tom Bates, Arlene Levy

RECENT DONATIONS

We extend our gratitude to our donors who have recently made gifts to the association. Special gifts that mark a loved one's birth, marriage, or passing are a way to ensure that others will be able to enjoy the beauty and solace of Yosemite for years to come.

Thomas J. Alexander, Ann Anton, Susan & Vincent Araiza, Paul & Joan Armstrong, BankAmerica Foundation, Share Bannister, Mary Beard, Matthew & Barbara Beaulieu, Robert N. Beck, Edward & Mildred Bennett, Steve Beuerman, Everett & Jean Beuerman, R. Gordon & Nancy C. Billhardt, Patte Bishop, James & Helen Brohm, Dr. & Mrs. Hal Browder, Katherine Bryant, Kenneth & Pam Byrum, George & Mary Louise Callas, Robert J. Carros, Mr. & Mrs. Alfred Childs, Connie Clark, David Cook, Mr. & Mrs. Earl Corder, C.M. & Marcia Cronin, Stephen Cunha, John & Maria Cunningham, Judith Dantico, Benjamin Davis, DFS Group Limited, Donovan & Ellen Dollar, James P. Else, Donald Emmrich, Richard & Sarah Evans, F.I. Key Foundation, Barbara Fagnano, Fred Fisher & Joe Lattuada, Guy Flemming, Ove Floystrup, Annette Floystrup & Ben Hong, Berry Foran, Sarah Galczynski, Gerhard Georgi, Birgit Geppert, Ronald Gerech, Nancy Giannetto & Janet King, GMAC Commercial Mortgage, Mr. & Mrs. James Goggin, James Hall, Kevin Hansen, Ann L. Hardean, Garry Hayes, Evangeline Hermanson, Tanya Hildebrand, Robert Hoffmann, Christy & Charles Holloway, Judy Horton, Elizabeth Hussey, IBM International Foundation, Andy Jecusco, John & Alice Jenkins, Marlo Johansen, Keith & Edy Johnson, Everett & Sondra Johnson, Judy Johnson, MaryJane & Vern Johnson, Joel Johnson, John Kadonada, J. S., & G. Kaplan, Keith Kawamoto, Lee Klein, Caroline Klund, Nils & Marie Lang-Ree, Jerry & Barbara Lawrence, Peter V. Lee, C. & M. Leith, Richard & Carrie Lipsey, Betty Mae & Jim Locke, Laurie & James May, Edward Mayer, Kenneth H. & Doris McClain, James McElmell, Nancy & Ray McHugh, Jerry & Dianne McMahon, Jim Mentink, Merced College, Mary & Fred Merrill, Marilyn Missimer, Jennie Moiso, Shirley Morano, Russell Morimoto, Mary Louise Myers, Andrew Naegeli, Brian Nafziger, Brian H. Nordstrom, Barbara Marr Parker, Cynthia Patton, Wm. D. Peppard, Jeanette Perlman, Beth Pratt, Caren & Jim Quay, Karen Ramsden, Laurel Rematore, Mr. & Mrs. Michael Renta, Steve & Laurie Richard, Ben Roberson, Lenore & Michael Roberts, Elizabeth Roemer, Sheila Scally, Richard L. Schadt, Amy Schneckenburger & Mike Reynolds, Ame Schneider, Elizabeth L. Schultz, Alan B. & Ruth W. Scott, Janet Seim, Don Senior & Barbara Nichols, Diane Sickmen, Peter Skinner & Marie Earl, Lee Smith & Lyla Schumaker, Ruth & Roger Strange, Sharon Swanson, Jeannie Tasker, Jeffrey Trust, Universal Studios, George Vega, Mary L. Watt, Jim & Betty Watters, Marilyn Webster, Mary Webster, Julius & Ruth Weigh, Jeff Weisend & Debbe Nye, Richard & Hazel Whipp, Mark & Sharon Wichmann, Raleigh & Patricia Wills, Otto & Roberta Wilson, Mr. & Mrs. Eliot Wirt, Woodlands Press, Working Assets, H.G. Ziegenfuss

In honor of Suzanne Corkins: Dr. Susan Sportsman

In memory of Rod Collier: Ben & Christie Cesar, Jessie Collier, Kelly & Sharon Collier, Ed & Janet Engesser, David & Elizabeth Himelson, Jon Kalina, John & Carolyn Loyd

In memory of Virginia Cowan: Sam & Barbara Skelly

In memory of Loralee Hiramoto: Rona Commings, Ceci Galeota, D. Popplewell & L.J. Belle

In memory of Florence Kelly: Louise Hose

In memory of Alice Mae Nickerson: Rebecca Miller

In memory of Ed Stauber: John & Mary Becker, Bubrick's Office Supply, Chernov, Stern & Krings, S.C., Robert & Sara Hawley, Raymond & Susan Keim, Ronald & Maureen Kornacki, Charles & Rita Stauber, Mark & Evonne Zalewski

In memory of James Tannenbaum: Rebecca Miller

For Bear Canisters: Earth Friends, Jeffrey McConnell





Yosemite Association
Post Office Box 230
El Portal, CA 95318

Return Service Requested

Non-profit Organization
U.S. POSTAGE PAID
YOSEMITE ASSOCIATION

Join the Yosemite Association

The Yosemite Association initiates and supports interpretive, educational, research, scientific, and environmental programs in Yosemite National Park, in cooperation with the National Park Service. Authorized by Congress, the Association provides services and direct financial support in order to promote park stewardship and enrich the visitor experience.

Besides publishing and selling books, maps, and other materials, YA operates an outdoor adventure program, the Art Activity Center, the bear canister rental program, and the Wilderness Permit Reservation system. Revenues generated by these activities fund a variety of National Park Service programs in Yosemite.

You can help us be successful by becoming a member. Individuals, families, and businesses throughout the country have long supported the Yosemite Association with their dues and participation in our programs.

Won't you join us in our efforts to make Yosemite an even better place?

MOVING?

If you are moving or have recently moved, don't forget to notify us. You are a valued member of the Association, and we'd like to keep in touch with you.

MEMBER BENEFITS

As a member of the Yosemite Association, you will enjoy the following benefits and much more:

- *Yosemite*, the quarterly Association journal;
- 15% discount on all books, products, and tuition for Outdoor Adventures offered by the Association;
- Discounts on lodging rates at properties in and around the park;
- 10% discount at The Ansel Adams Gallery in Yosemite Valley (some restrictions apply);
- Opportunity to attend member events and to volunteer in the park;
- Know that your support is helping us make a difference in Yosemite National Park.

When you join at one of the following levels, you will receive a special membership gift:

Supporting: "Spirit of Yosemite," the video version of the award-winning park orientation film.

Contributing: *Yosemite—The Promise of Wildness*, an elegant book of essays and photographs.

Sustaining: *Tradition and Innovation, A Basket History of the Indians of the Yosemite/Mono Lake Area*, a beautifully illustrated, finely printed book.

Patron: a matted color photograph by Howard Weamer, "Half Dome—Storm Light."

Benefactor: an Ansel Adams Special Edition print, "Yosemite Valley—Thunderstorm."

YOSEMITE ASSOCIATION

Board of Trustees

Christina A. Holloway,
Chairman
Gerald L. Barton
Barbara Boucke
Thomas E. Bowman
Suzanne Corkins
Phil Frank
Gerald Haslam
Kimi Kodani Hill
Malcolm Margolin
Kathleen Orr
Lennie Roberts
Thomas J. Shephard
Gina Tan
Phyllis Weber
Kevin Kelly,
Ex officio
Jeani Ferrari,
Ex officio
Elvira Nishkian,
Ex officio
Mike Tollefson,
NPS Representative
Chris Stein,
NPS Representative

President

Steven P. Medley

Vice President/CFO
Beth Pratt

Sales

Patricia Wight, *Director*
Leah Mills, *Operations Manager*
Sandy Hamm,
Operations Assistant
Shelly Stephens,
Operations Assistant

Outdoor Adventures

Lou Carter, *Fulfillment Coordinator*

Membership

Laurel Rematore,
Director
Connie Nielson,
Coordinator
Anne Steed,
Coordinator

Administrative Staff

Jill Harter, *Bookkeeper Supervisor*
Denise Ludington,
Assistant
Chris Geis,
Administrative Assistant



is published quarterly for members of the Yosemite Association. It is edited by Steven Medley and produced by Robin Weiss Graphic Design. Copyright © 2003 Yosemite Association. Submission of manuscripts, photographs, and other materials is welcomed. E-mail can be sent to: info@yosemite.org
Website: <http://yosemite.org> Cover inset photo of Theodore Roosevelt courtesy of the National Park Service Research Library.

Please enroll me in the Yosemite Association as a ...

- \$30 Individual Member
 \$35 Joint/Family Member
 \$50 Supporting Member
 \$100 Contributing Member
 \$250 Sustaining Member
 \$500 Patron Member
 \$1,000 Benefactor Member
 \$40 International Member

Name (please print): _____

Address: _____

City: _____

State/Zip: _____

Daytime phone number: _____

E-mail address: _____

Enclosed is a check for: _____

Or charge credit card number: _____

expires: _____

Mail to: **Yosemite Association**, PO Box 230, El Portal, CA 95318. 209/379-2646