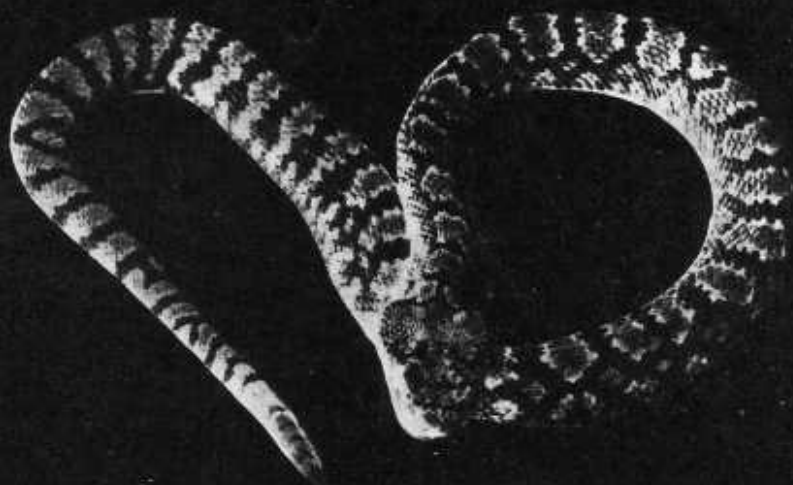


YOSEMITE

NATURE NOTES

VOLUME XXXVII - NUMBER 9

SEPTEMBER 1958



Western Rattlesnake

—Anderson, NPS



IN COOPERATION WITH THE NATIONAL PARK SERVICE.

OUT OF YOSEMITE'S PAST

A One Picture Story



George Shaffer and his group from Oakdale camping in Yosemite Valley in 1890.

YOSEMITE

Nature Notes

in its 37th year of public service. The monthly publication of Yosemite's park naturalists and the Yosemite Natural History Association.

John C. Preston, Superintendent

Robert F. Upton, Assoc. Park Naturalist

S. J. Zachwieja, Junior Park Naturalist

D. H. Hubbard, Park Naturalist

R. H. Sharp, Asst. Park Naturalist

Robert A. Grom, Park Naturalist Trainee

VOL. XXXVII

SEPTEMBER 1958

NO. 9

SOME LOCALITY RECORDS OF YOSEMITE HERPS

By Lawrence P. Richards, Ranger Naturalist

On reading Naturalist M. V. Walker's paper on the herpetofauna of Yosemite ("Reptiles and Amphibians of Yosemite National Park," *Yosemite Nature Notes*, Jan. 1946, XXV, No. 1: 1-48), it was realized that a useful complement could be made to this publication in the form of a compilation of known herpetological locality records from several ready sources in the Yosemite Museum. The following list includes localities for which adequate records are available and which are not mentioned in Walker's publication of eleven years ago. The sources of these records are (1) the Yosemite Museum herpetological collection card catalog, (2) the Yosemite Museum Specimen or Artifact Record sheet file, and (3) the Yosemite Museum Natural History (or Wildlife) Observations slip file.

The present list should be used in conjunction with the descriptions of localities in Walker's paper, for no localities mentioned in either a general or detailed manner in his text are

duplicated here. It is hoped that the present list will be of value to those persons interested in locating and studying some of the species of herps of Yosemite National Park.

Many people, both National Park personnel and park visitors, have contributed data used in this list, and the members of the Yosemite Museum staff are grateful to all of them for bringing these data and/or specimens to the museum for recording and preservation.

NOTE:

1. All localities are in Yosemite National Park except where noted otherwise.

2. Mariposa County is understood for all localities except as otherwise noted; Madera and Tuolumne counties are abbreviated Mad. Co. and Tuol. Co., respectively.

3. Boundary Hill Research Reserve referred to in Walker's paper as Yosemite Research Reserve) is an area in Mariposa Co. of about 25 sq. mi. located between Yosemite and Cascade creeks, south of White

Wolf and the Tioga Road, and north of the El Capitan Trail running along the northern rim of Yosemite Valley.

4. Swamp Lake Research Reserve is an area in Tuolumne Co. of about 12 sq. mi. located west of Hetch Hetchy Reservoir and that section of the Tuolumne River between the Hetch Hetchy Dam and the western boundary of the park, and east of the truck trail from the Lake Eleanor Road to North Mountain.

5. Dates represent dates of observation or specimen capture except as

otherwise indicated. The term "(acc.)", following the date, includes the date of accession of the specimen into the Yosemite Museum collection and is used when the date of capture of the animal is not readily available.

6. The term "YM", followed by a number, refers to Yosemite Museum herpetological collection numbers for individual specimens. Any other initials followed by a number refer to a numbered specimen recorded in the particular observer's field catalog.



—Hubbard, NPS

Yosemite's Junior Ranger Program gives youngsters an opportunity to learn about misunderstood animals such as the rattlesnake-killing mountain king snake.

Slender Salamander, *Batrachoseps attenuatus* Eschscholtz:

Jul. 9, 1949, Henness Ridge Fire Lookout, 6000 ft., (YM 552; another seen by observer in same spot; first record for park); Robt. Wagner.

Sierra Nevada Salamander, *Ensatina eschscholtzi platensis* Espada:

Nov. 5, 1950, 0.3 mi. downstream from Vernal Fall, 4500 ft., Merced R.; Joe Gorman.

Dec. 6, 1950, near top of Wawona Pnt., 6400 ft.; Mr. Joyce.

Sept. 9, 1957, Yosemite Fall Indian Cave (cave at foot of Upper Yosemite Fall), 4995 ft., Yosemite Valley; W. W. Bryant.

Slender Salamander, *Batrachoseps attenuatus* Eschscholtz:**Sierra Nevada Salamander, *Ensatina eschscholtzi platensis* Espada:****Mount Lyell Salamander, *Hydromantes platycephalus* Camp:**

Jul. 28, 1934, Peeler L., 9532 ft., (YM 101, 102); A. Cameron.

June 6, 1938, entrance to Tenaya Box Canyon, 5800 ft., (YM 237); Bob Weigal.

Jul. 29, 1938 (acc.), cave at foot of Upper Yosemite Fall, 4995 ft., Yosemite Valley, (YM 394); Lowell Adams.

Jul. 31, 1940 (acc.), Ledge Trail near Glacier Pnt., 6700 ft., (YM 464); C. H. Martin.

Aug. 1, 1940 (acc.), Triple Peak Divide, 10700 ft., Mad. Co., (YM 466, 467); C. Hemphill & C. H. Martin.

Aug. 30, 1941, near top of Ledge Trail, 6900 ft., Yosemite Valley, (YM 534); W. A. Evans.

Jul. 8, 1949, Firefall Ledge, 6300 ft.

900 ft. below Glacier Pnt., (YM 553, 554, 555, 556); C. Danforth.

Nov. 5, 1950, near top of Mist Trail below Vernal Fall, 5015 ft., Merced R.; Joe Gorman.

Yosemite Toad, *Bufo canorus* Camp:

Aug. 7, 1933, W. side Kuna Crest, 11000 ft., Tuol. Co., (YM 52); D. Michner.

Aug. 2, 1939, Lower McCabe L., 10000 ft., Tuol. Co., (YM 327, 328, 329, 331, 332, 333, 334, 335, 339, 341, 342, 343); J. E. Cole.

Aug. 7, 1939, Smoky Jack Mdws., 8600 ft., Cold Canyon, Tuol. Co., (YM 364); J. E. Cole.

Aug. 12, 1939, Harden L., 7575 ft., Tuol. Co., (YM 373); J. E. Cole.

June 27, 1940 (acc.), Tioga Pass Ranger Sta., 9940 ft., Tuol. Co., (YM 413, 414, 415, 416); C. H. Martin.

Jul. 31, 1940 (acc.), near Harriet Lakes, 10000 ft., Mad. Co., (YM 446); C. Hemphill.

Jul. 21, 1941, Turner Mdw., 7700 ft., (YM 528, 530); S. Hanson.

Sept. 10, 1955 (acc.), 0.5 mi. SE Tioga Pass Ranger Sta., 9800 ft., Tuol. Co., (YM 564); E. Karlstrom.

Aug. 3, 1957, between Middle and Upper Gaylor Lakes, 10300 ft., Tuol. Co., (LR 60); L. P. Richards.

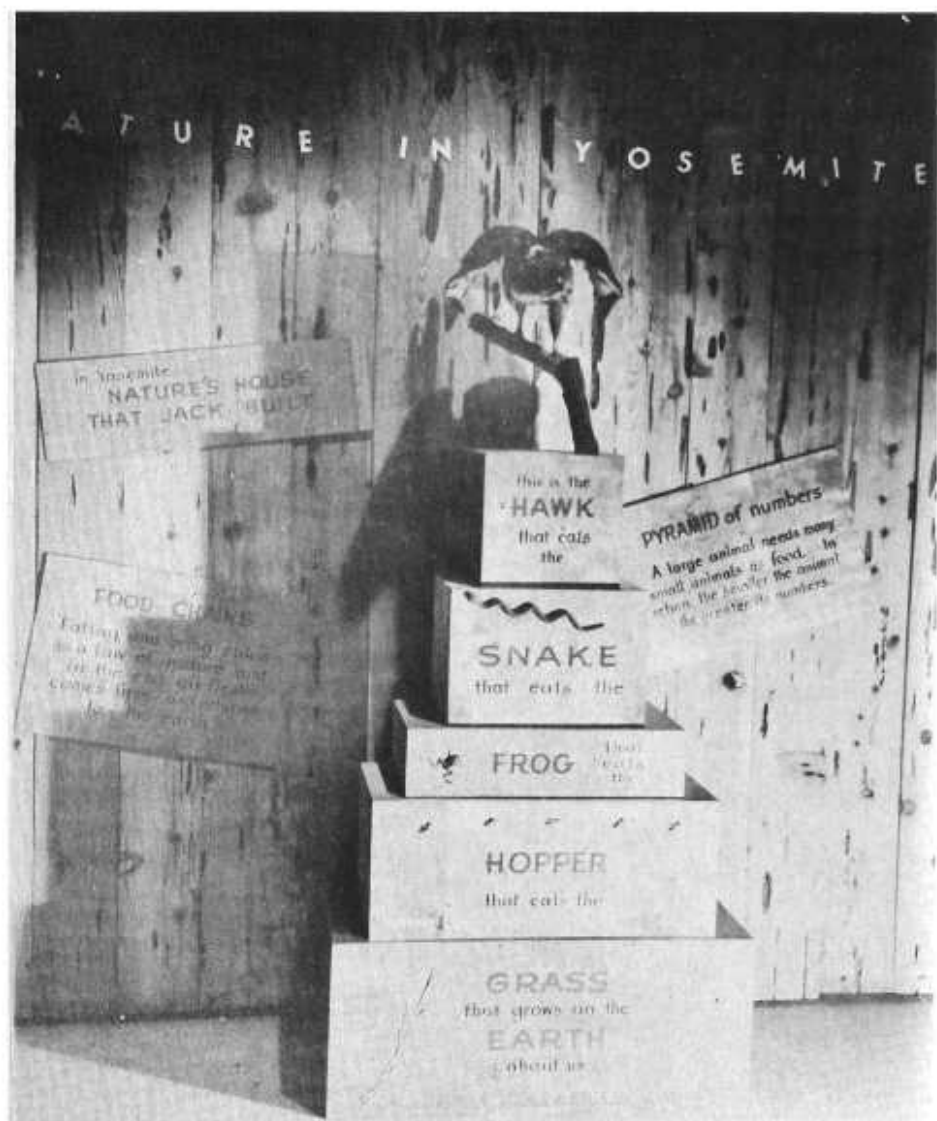
Pacific Tree-toad, *Hyla regilla* Baird and Girard:

Jul. 29, 1934, Kerrick Mdw., 9400 ft., (YM 103); A. Cameron.

Aug. 1, 1934, S. side Sawtooth Ridge, 10800 ft., (YM 104); A. Cameron.

Apr. 20, 1939, Lake Eleanor Dam, 4600 ft., Tuol. Co., (YM 262); J. E. Cole.

May 4, 1939, E. of Tenaya L., 8145 ft., (YM 275, 276); J. E. Cole.



—Hubbard, NPS

An exhibit at the Happy Isles Nature Center tells the importance of snakes and frogs in "Nature's House that Jack Built".

June 27, 1940 (acc.), Tioga Pass Ranger Sta., 9940 ft., Tuol. Co., (YM 418, 463); C. H. Martin.

Jul. 22, 1941, Horse Ridge, 9000 ft., (YM 531); F. Kellar.

Mar. 14, 1940 (acc.), Wawona Valley, 4000 ft., (YM 388, 389); J. E. Cole & D. Tiemann.

Sierra Yellow-legged Frog, *Rana boylei sierrae* Camp:

Jul. 14, 16, 1933; Jul. 12, 1934; Jul. 6, 8, 1935; Boundary Hill Research Reserve, 8000-8200 ft., (YM 64, 65, 66, 67, 91, 92, 93, 94, 188, 189, 190, 101, 192, 193, 194, 195); D. Michner, A. Cameron, M. D. Bryant, H. F. Evans.

Aug. 4, 1933, unnamed lake, 10500 ft., 1 mi. E. Mt. Clark, Tuol. Co., (YM 68); D. Michner.

Jul. 27, 29, 1934, Kerrick Mdw., 9300 ft., (YM 105, 107, 108); A. Cameron.

Jul. 26, 29, 1934, Smedberg L., 9223 ft., (YM 106, 109, 110); A. Cameron.

Feb. 2, Aug. 2, 1939 (acc.), Lower McCabe L., 10000 ft., Tuol. Co., (YM 325, 326, 330, 336, 337); J. E. Cole.

Aug. 5, 1939, Virginia Canyon, 10000 ft., Tuol. Co., (YM 368); J. E. Cole.

Aug. 5, 1953, Mt. Dana, 10500 ft., Tuol. (?) Co. or Mono (?) Co., (in Yosemite Nat. Park?); Mary Hood.

ca. June 27, 1955, NE. side Mt. Conness, 12000 ft., Tuol. (?) Co. or Mono (?) Co., (in Yosemite Nat. Park?); Roy Christian.

Summer, 1955, Mt. Conness, 12000 ft., Tuol. (?) Co. or Mono (?) Co., (in Yosemite Nat. Park ?); R. Christian.

Bull Frog, *Rana catesbeiana* Shaw: (An exotic species in California)

Summer, 1955, Ahwahnee Hotel Pond, 3060 ft., Yosemite Valley; E. Karlstrom.

California Yellow-legged Frog, *Rana boylei boylei* Baird:

Apr. 20, 1939, Lake Eleanor Dam, 4600 ft., Tuol. Co., (YM 264); J. E. Cole.

Sept. 24, 1939, Sniell (or Sniell ?) L., 11500 ft., base of Lyell Glacier, Tuol. Co., (YM 377, 378, 379, 380, 381); J. E. Cole.

Jul. 17, 1940, Mariposa Grove, 6500 ft., (YM 490); C. Hemphill.

Jul. 25, 1940 (acc.), unnamed lake, 9700 ft., NE. Mt. Clark, (YM 440, 441, 442, 443, 444); C. Hemphill & A. B. Kromb.

Jul. 30, 1940 (acc.), unnamed lake SW. Isberg Peak, 10800 ft., Mad. Co., (YM 445); C. Hemphill.

Jul. 23, 1941, Turner Mdw., 7700 ft., (YM 526, 527, 529); F. Kellar.

Aug. 11, 1957, Upper Lyell Base Camp, 10400 ft., ca. 2.4 mi. NNE. summit Mt. Lyell, Tuol. Co., (LR 64, 65, 66, 67); L. P. Richards.

Western Pond Turtle, *Clemmys marmorata* Baird and Girard: (Probably

this species; none of these individuals repositied in Yosemite Museum.)

Oct. 1948, Laurel L., 6700 ft., Tuol. Co.; R. N. McIntyre.

June 11, 1949, Canyon Ranch, ca. 5000 ft., 2.5 mi. from Mather Ranger Sta. on road toward Hetch Hetchy Dam, Tuol. Co.; J. Mul-lady. (Identified as this species by H. C. Parker.)

July 4, 1950, Stoneman Mdw., 3960 ft., Yosemite Valley; M. Pitman.

Mountain Lizard, *Sceloporus graciosus gracilis* Baird and Girard:

- Jul. 13, 1934, Boundary Hill Reserve 8300 ft., (YM 97, 98); A. Cameron.
 Jul. 24, 1934, E. side Piute Crk., 6500 ft., (YM 124, 126, 127, 128); A. Cameron.
 Jul. 8, 1938 (acc.), Swamp L., 5200 ft., Tuol. Co., (YM 226); H. J. Leraas.
 Jul. 14 (acc.), 25, 1940, Washburn Pnt., 5200 ft., (YM 465, 492); C. Hemphill & C. H. Martin.
 Jul. 22, 1941, lower edge Horse Ridge, 8000 ft., (YM 524, 525); S. Hanson.

Western Fence Lizard, *Sceloporus occidentalis occidentalis* Baird and Girard:

- Sept. 21, 1932 (acc.), Mariposa Grove, 6500 ft., (YM 25); Guy Van Duyn.
 Jul. 24, 1934, Piute Crk., 6000 ft., Tuol. Co., (YM 123); A. Cameron.
 Jul. 8 1941, mud flow, 5200 ft., SW. Swamp L., Tuol. Co., (YM 505, 506); S. Hanson.

Pacific Blue-bellied Lizard, *Sceloporus occidentalis biseriatus* Hallowell:

- Jul. 9, 1932 (acc.), Tenaya Canyon, 5000 ft., (YM 23); Guy Van Duyn.
 Jul. 14, 1934 (acc.), Yosemite Crk., 7000-7200 ft., near top Upper Yosemite Fall, (YM 99, 100); A. Cameron.
 Jul. 24, 1934 (acc.), S. side Tuolumne Canyon on Pate Valley trails, 6000 ft., Tuol. Co., (YM 122); A. Cameron.
 Jul. 8, 9, 1938 (acc.); Jul. 11, 1939; Swamp L., 5200 ft., Tuol. Co., (YM 227, 228, 307); H. J. Leraas, N. W. Hemphill.
 Aug. 25, 1940 (acc.), Little Yosemite Valley, 6000 ft., (YM 474); C. H. Martin.

Aug. (?) or Jul. 11, 1940 (acc.), island in L. Eleanor, 4694 ft., Tuol. Co., (YM 475); C. H. Martin & C. Hemphill.

Jul. 27, 1957, ca. 0.25 mi. N. Nevada Fall, ca. 5700-5950 ft., on N. side Merced R., (LR 57, 58); L. P. Richards.

Jul. 27, 1957, summit Half Dome, 8852 ft., (LR 59); L. P. Richards.

San Diego Alligator Lizard, *Gerrhonotus multicarinatus webbi* Baird:

- Aug. 19, 1940 (acc.), near Gravel Pit L., 5300 ft., near Swamp Lake Research Reserve, Tuol. Co., (YM 480); C. Hemphill.
 Jul., 1941, Miguel Mdws., 5200 ft., Tuol. Co., (YM 504); C. B. Todd.

Sierra Alligator Lizard, *Gerrhonotus coeruleus palmeri* Stejneger:

- Jul. 21, 1932, Mariposa Grove, 6500 ft., (YM 27); Guy Van Duyn.
 Jul. 24, 1934, Pleasant Valley, 7700 ft., Tuol. Co., (YM 121); A. Cameron.
 Aug. 7, 1930, Smoky Jack Mdws., 8600 ft., Cold Canyon, Tuol. Co., (YM 365); J. E. Cole.
 May 30, 1940 (acc.), Hetch Hetchy Rd., 5000 ft., near Hetch Hetchy Dam, Tuol. Co., (YM 448); C. H. Martin.
 Jul. 14, 1941, Snow Crk. Falls Trail, 4200 ft., Tenaya Canyon, (YM 533); W. E. Beatty.
 Jul. 21, 1941, Turner Mdw., 7700 ft., (YM 521), S. Hanson.
 Jul. 23, 1941, Cascade L., 8500 ft., Boundary Hill Research Reserve, (YM 522); K. Johnson.
 Jul. 25, 1941, Moraine Mdws., 8800 ft., Mad. Co., (YM 518, 519); F. Kellar.



—Anderson, NPS

The first Mount Lyell salamanders known to science were found near the head of Lyell Canyon in 1915. Since then they have been recorded from many localities, including the top of Half Dome!

California Whip-tailed Lizard, *Cnemidophorus tessellatus stejnegeri* Say:

Jul. 8, 1938, Swamp L., 5200 ft., Tuol. Co., (YM 223); H. J. Leraas.

Jul. 14, 1939, N. side Tuolumne Camp, Poopenaut Valley Trail, 5200 ft., Tuol. Co., (YM 313); J. E. Cole.

Jul. 10, 1941, East Lava Flow, North Mt., 5000 ft., Tuol. Co., (YM 499); J. Dixon.

Yosemite Skink, *Eumeces gilberti gilberti* Van Denburgh:

Mar. 22, 1951, Wawona, 4096 ft., South Fork Merced R.; Gary Pearse.

June, 1956, Wawona Loop Rd. around golf course, 4350 ft., Wawona; R. Carpenter.

June, 1956, Wawona Pnt., 6700 ft., F. Castillo.

Jul. 11, 1957, ca. 2.3 mi. W. Cascade Crk. on New Big Oak Flat Rd., ca. 5300 ft., (LR 56); L. P. Richards.

Aug. 5, 1957, Nevada Fall Trail, 4500 ft., ca. 0.4 mi. S. of the more southern of the Happy Isles, (LR 63); L. P. Richards.

Pacific Rubber Snake, *Charina bottae bottae* Blainville:

Aug. 30, 1935, Lyell Fork Merced R., 8000 ft., (YM 203); J. E. Cole.

Jul. 13, 1939, Frog Crk., 6000 ft., Tuol. Co., (YM 315); R. L. Lewis.

July. 14, 1949, Indian Crk., 6000-7300 ft., near Wawona (sic; Chinquapin?); Robt. Wagner.

June 29, 1957, Base Line Blister Rust Control Camp, 5750 ft., 1.75 mi. E. Mather Ranger Sta., Tuol. Co.;

Jul. 20, 1957, DOR Tioga Rd., 7100 ft., near Gin Flat; L. P. Richards. Reyn Shaeffer & Vince Gilliland.

Jul. 22, 1957, Kerrick Canyon, near

trail junction of Kerrick Canyon Trail and Bear Valley Trail, 8500 ft., Tuol. Co.; Robt. M. House.

Sharp-tailed Snake, *Contia tenuis* Baird and Girard:

Jul. 10, 1957, Middle Fork Campground, 4000 ft., where road to Hetch Hetchy crosses Middle Fork of Tuolumne R., Tuol. Co., (1 mi. W. of outside of boundary of Yosemite Nat. Park); Douglass Miller & Mike Erwin.

Western Blue Racer, *Coluber constrictor* (probably *mormon*) Baird and Girard:

Sept. 7, 1957, 0.75 mi. down trail, 4300 ft., to Poopenaut Valley from road to Hetch Hetchy Dam from Mather Ranger Sta., Tuol. Co.; L. P. Richards.

California Striped Whipsnake, *Masticophis lateralis* Hallowell:

Sept. 6, 1957, 1 mi. E. Le Conte Pnt., 6400 ft., Tuol. Co.; Douglas R. & Richard H. Brown.

Pacific Gopher Snake, *Pituophis catenifer catenifer* Blainville:

June 25, 1948, Gentry Ranger Sta., 6000 ft., at junction Old Big Oak Flat Rd. and Cascade Crk., M. V. Hood.

California Mountain King Snake, *Lampropeltis zonata*, ssp.

Apr. 28, 1934, N. side Hetch Hetchy Valley, 3700 ft., Tuol. Co., (YM 74); A. E. Borell.

Jul. 4, 1950, bridge over Merced R. on Nevada Fall Trail, 4443 ft.; M. Pitman.

California King Snake, *Lampropeltis getulus californiae* Blainville:

Jul. 11, 1949, Blister Rust Control Camp, 6200 ft., 0.5 mi. S. Chinquapin; Seymour Ziff.

Sierra Nevada Garter Snake, *Thamnophis ordinoides couchi* Kennicott:

Jul. 2, 1949, Little Yosemite Valley; Vessels Noramor.

California Red-sided Garter Snake, *Thamnophis sirtalis tetrataenia* Yarrow:

June 28, 1957, bridge over Merced R., 3960 ft., N. of Old Village, Yosemite Valley; Don Thornton.

Sept. 7, 1957, DOR, 3.2 mi. NE. Mather Ranger Sta., 5000 ft., on road from Mather Ranger Sta. to Hetch Hetchy Dam, Tuol. Co.; L. P. Richards.

Mountain Garter Snake, *Thamnophis elegans elegans* Baird and Girard:

Jul. 15, 1950 (?) or 1956 (?), Mt. Hoffman, 10800 ft.; R. M. B. (Brown).

Aug. (late), 1955, above (*sic*; in altitude or upstream ?) Happy Isles; Roy Christian.

Aug. 9, 1957, Lyell Canyon floor, ca. 8900 ft., Tuol. Co.; L. P. Richards.

Spotted Night Snake, *Hypsiglena ocborobrychus ocborobrychus* Cope:

Jul. 1, 1951, road between Hetch Hetchy picnic area and dam, ca. 4000 ft., Tuol. Co.; R. H.

Pacific Rattlesnake, *Crotalus viridis oreganus* Holbrook:

Aug. 19, 1935 (*acc.*), at spring on Half Dome Trail, ca. 7050-7250 ft. (YM 202); Paul T. Wilson.

Aug., 1945, Little Yosemite Valley, ca. 6300 ft., ca. 3 mi. upstream from Nevada Fall, (YM 539); Theo. Reddick.

Mar. 21, 1947 (*acc.*), Washburn Pnt., 7450 ft., (YM 543); Wm. F. Marsh.

Aug. 27, 1949; Jul. 18, 1951, Glacier Pnt., 7200 ft.; C. S. D., L. Moore.

May 29, 1950, Mono Crk., 7000 ft., near Mono Mdw. Trail crossing, Mono Mdw.; E. D. Godwin.

Jul. 24, 1956, top of ridge, 9200 ft., SE. Johnson L., Mad. Co.; S. (?) C. Mapes.

Sept. 1, 1957, 1 mi. SW, Pate Valley, 4400 ft., Tuol. Co.; Donald R. & Richard H. Brown.

Sept. 5, 1957, 200 yds. N. Table L., 7100 ft., Pleasant Valley, Tuol. Co.; Donald R. & Richard H. Brown.



A REVISED AMPHIBIAN AND REPTILE KEY

By John D. Cunningham, Ranger Naturalist

Since publication of "Reptiles and Amphibians of Yosemite National Park" (Walker, 1946, *Yosemite Nature Notes*, 25 (1): 1-48, two additional species of amphibians (California Slender Salamander, *Batrachoseps attenuatus*; Bullfrog, *Rana catesbiana*) have been discovered within the boundaries of Yosemite National Park and several nomenclatorial changes have been made. It seems advisable, therefore, to revise Walker's key to include the additional species and to incorporate the name changes. In addition, several typographical errors in Walker's key are corrected.

Because there is considerable disagreement among taxonomists regarding subspecies and since they are of little interest to the majority using this simplified key, they are not enumerated. Subspecies are statistical entities determined from large series and, thus, rarely can they be

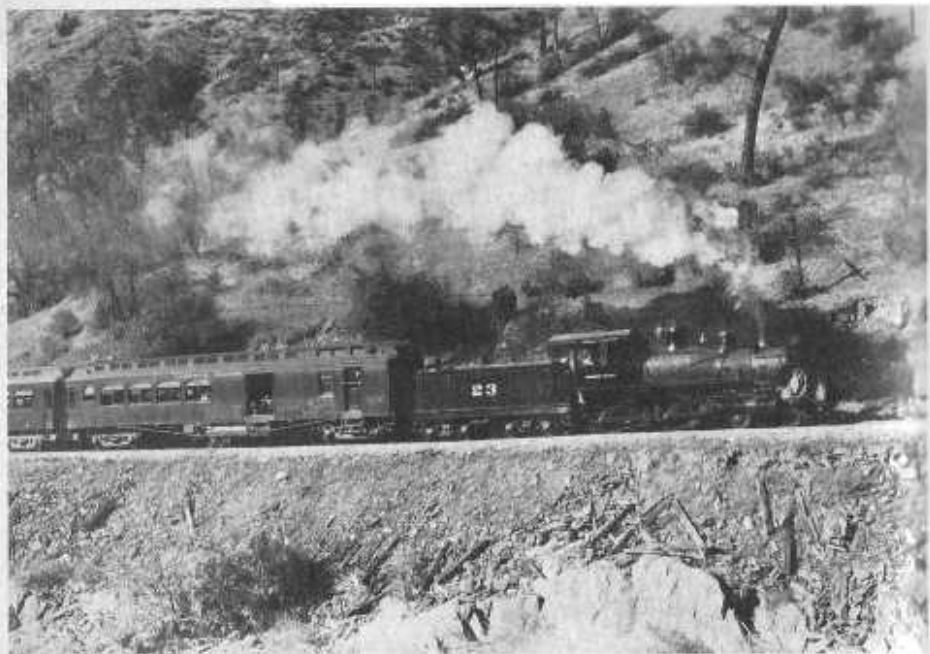
distinguished in the field. The only subspecies listed are those of the Western garter snake, *Thamnophis elegans*. Within this species are numerous subspecies distinguishable not only by scales and their pattern but also by behavior; some are primarily aquatic while others are largely terrestrial. *Thamnophis e. rouchi* is a representative of the aquatic group and is rarely discovered far from water while *T. e. elegans* is often found long distances from water in quiet dry situations.

This key, as was Walker's, is entirely artificial and is applicable only within Yosemite National Park. Certain common names have been altered to correspond with Stebbins' *Amphibians and Reptiles of the Western United States*, the authority for this region. In certain cases the key is applicable only for adult specimens.

1a. Vertebrates with body covering smooth, usually moist	Amphibians	2
1b. Vertebrates with body covering of dry scales	Reptiles	11
2a. Tailed amphibians with an elongate body	Salamanders	3
2b. Tailless amphibians with a short body	Anurans	6
3a. Skin slightly rough, reddish brown above.....	CALIFORNIA NEWT—<i>Taricha torosa</i>	
3b. Skin smooth		4
4a. Skin not conspicuously spotted.....	CALIFORNIA SLENDER SALAMANDER—<i>Batrachoseps attenuatus</i>	
4b. Skin more or less spotted		5
5a. Body brownish black with a few yellow or orange spots.....	ESCHSCHOLTZ'S SALAMANDER—<i>Ensatina eschscholtzi</i>	
5b. Body chocolate or slate color with numerous grayish spots.....	MOUNT LYELL SALAMANDER—<i>Hydromantes platycephalus</i>	

6a. Adults with parotoid glands present	Toads	7
6b. Adults without parotoid glands		8
7a. Parotoid glands large; space between glands wider than one gland	WESTERN TOAD—<i>Bufo boreas</i>	
7b. Parotoid glands small; space between glands smaller than one gland	YOSEMITE TOAD—<i>Bufo canorus</i>	
8a. Toes with expanded adhesive discs at their tips	PACIFIC TREE-FROG—<i>Hyla regilla</i>	
8b. Toes without expanded adhesive discs at their tips	Frogs	9
9a. Yellow coloring on inner side of hind legs; relatively small frogs	YELLOW-LEGGED FROG—<i>Rana muscosa</i>	
9b. No yellow coloring on inner side of hind legs; relatively large frogs		10
10a. Dorsolateral folds present	RED-LEGGED FROG—<i>Rana aurora</i>	
10b. Dorsolateral folds absent	BULLFROG—<i>Rana catesbeiana</i>	
11a. Reptiles with four legs		12
11b. Reptiles without legs		19
12a. Body covered above and below with a bony shell	PACIFIC POND TURTLE—<i>Clemmys marmorata</i>	
12b. Body covered with scales	Lizards	13
13a. Femoral pores (a row of glandular pores on underside of thigh) present		14
13b. Femoral pores absent		17
14a. Head adorned with short sharp horns	COAST HORNED LIZARD—<i>Phrynosoma coronatum</i>	
14b. Head without horns		15
15a. Belly scales large, in 8 longitudinal rows	WESTERN WHIPTAIL—<i>Cnemidophorus tigris</i>	
15b. Belly scales small and numerous	Blue-bellied Lizards	16
16a. Scales on back of thigh not keeled	SAGEBRUSH LIZARD—<i>Sceloporus graciosus</i>	
16b. Scales on back of thigh strongly keeled	WESTERN FENCE LIZARD	
17a. Dorsal scales smooth; no ridge running lengthwise of scale	GILBERT'S SKINK—<i>Eumeces gilberti</i>	
17b. Dorsal scales keeled	Alligator Lizards	18
18a. Dorsal scale rows usually 14. Iris of eye yellow (live specimens)	FOOTHILL ALLIGATOR LIZARD—<i>Gerrhonotus multicarinatus</i>	
18b. Dorsal scale rows usually 16. Iris of eye dark (live specimens)	NORTHERN ALLIGATOR LIZARD—<i>Gerrhonotus coeruleus</i>	
19a. Snakes with pupil of eye vertical		20
19b. Snakes with pupil of eye round		22
20a. Dorsal body scales strongly keeled. Tail with rattle	WESTERN RATTLESNAKE—<i>Crotalus viridis</i>	
20b. Dorsal body scales smooth		21
21a. Tail short and stubby. Skin loosely fitting	RUBBER SNAKE—<i>Charina bottae</i>	
21b. Tail not short and stubby. Skin normal	SPOTTED NIGHT SNAKE—<i>Hypsiglena torquata</i>	
22a. Dorsal body scales keeled		23
22b. Dorsal body scales smooth, not keeled		26
23a. Dorsal body scales in 29 or more rows	GOPHER SNAKE—<i>Pituophis catenifer</i>	
23b. Dorsal body scales in 19 to 21 rows	Garter Snakes	24
24a. Without conspicuous lateral or dorsal light lines	WESTERN GARTER SNAKE—<i>Thamnophis elegans couchi</i> - aquatic subspecies	
24b. With conspicuous later and dorsal light lines		25
25a. With reddish spots or bars on sides	COMMON GARTER SNAKE—<i>Thamnophis sirtalis</i>	
25b. Without reddish spots or bars on sides	WESTERN GARTER SNAKE—<i>Thamnophis elegans elegans</i> - terrestrial subspecies	
26a. Tail short, ending in a sharp point or spine	SHARP-TAILED SNAKE—<i>Contia tenuis</i>	
26b. Tail not short, normally long and slender		27
27a. Anal plate divided		28
27b. Anal plate single		30
28a. A light neck ring present	WESTERN RING-NECKED SNAKE—<i>Diadophis amabilis</i>	
28b. Neck ring absent		29
29a. Body with conspicuous lateral light lines	CALIFORNIA STRIPED WHIPSNAKE—<i>Masticophis lateralis</i>	
29b. Body without lateral light lines; belly yellow	RACER—<i>Coluber constrictor</i>	
30a. Body marked with rings of black and white only	COMMON KING SNAKE—<i>Lampropeltis getulus</i>	
30b. Body marked with rings of black, white, and red (rarely black and white)	CALIFORNIA MOUNTAIN KING SNAKE—<i>Lampropeltis zonata</i>	

REMEMBER WHEN?



Many readers will remember the old Yosemite Valley Railway which operated from 1907 to 1945, and the confusion which ensued upon arrival at El Portal where travelers were transferred to busses for the trip into Yosemite Valley.



PUBLICATIONS FOR SALE AT THE YOSEMITE MUSEUM

All mail orders should be addressed to, and remittances made payable to, YOSEMITE NATURAL HISTORY ASSOCIATION, YOSEMITE NATIONAL PARK, CALIFORNIA. Prices include postage, insurance, and on proper items, California State Sales Tax 3%, plus 1% County Tax.

GENERAL

Adams' Guide to Yosemite Valley, Illustrated	\$1.65
Auto Tour of Yosemite Valley, Self-Guiding - Beatty and Harwell30
Auto Tour of Yosemite National Park - Dutton and McHenry60
Campsite Finder (Western) - Hartesveldt	1.65
Climbers Guide to High Sierra - Sierra Club	3.25
Devils Postpile National Monument - Hartesveldt30
Exploring Our National Parks and Monuments - Butcher (paper)	3.75
Exploring Our National Parks and Monuments - Butcher (cloth)	5.40
Going Light - With Backpack or Burro - Sierra Club	2.25
Happy Isles Nature Center, Your Guide to - Hubbard20
National Park Story in Pictures - Story80
National Parks, The - What They Mean to You and Me - Tilden (cloth)	6.20
National Parks, The - What They Mean to You and Me - Tilden (paper)	1.15
Nature Trail - Inspiration Point Self-Guiding - Carpenter20
Nature Trail - Mariposa Grove Self-Guiding - Wason20
Outdoor Hazards - Real and Fancied - Hood	4.25
Place Names of Yosemite Valley - Hartesveldt30
Rocks & Minerals, How to Know Them - Pearl65
Starr's Guide to John Muir Trail and High Sierra Region	2.25
This is California - Obert	8.00
Waterfalls, Famous, of the World - Brockman60
Yosemite and the Sierra Nevada - Ansel Adams & John Muir	12.70
Yosemite Story, The - Scott	1.20
Yosemite Trails & Tales - Taylor90

ANIMAL LIFE

Animal Tracks, Field Guide to - Murie	4.30
Birds of Pacific States - Hoffman	5.40
Birds, Western, Field Guide to - Peterson	4.30
Birds of Yosemite - Stebbins85
Fishes of Yosemite National Park - Evans-Wallis50
Mammals, Field Guide to - Burt and Grossenheider	4.30
Mammals of Yosemite National Park - Parker60
Reptiles and Amphibians of Yosemite National Park - Walker45
Survey of Sierra Nevada Bighorn - Jones60

TREES AND FLOWERS

Broadleaved Trees of Yosemite National Park - Brockman60
Cone-bearing Trees of Yosemite National Park - Cole45
Ferns, Field Guide to - Cobb	4.30
Sequoias, Yosemite, Guide to the - McFarland50
Wildflowers, Common, of Yosemite - Beatty, Harwell and Cole25
Wildflowers of the Sierra (80 color photos) - Hubbard55
Wildflowers, Western, Field Book of - Armstrong	5.40

HISTORY AND INDIANS

Ghost Mines of Yosemite - Hubbard (paper)	1.20
Ghost Mines of Yosemite - Hubbard (cloth)	3.00
Gold, Guns and Ghost Towns - Chalfant	3.80
Indians, Yosemite, Yesterday and Today - Godfrey35
John Muir, Protector of the Wilds - Haines-Morrill	2.00
Miwok Material Culture - Barrett and Gifford (paper)	2.20
Miwok Material Culture - Barrett and Gifford (cloth)	3.25
Mother Lode Country, Guide to the - Brockman60
100 Years in Yosemite - Russell (paper)	2.20
100 Years in Yosemite - Russell (cloth)	3.25
One Thousand California Place Names - Gudde	1.15
Steve Mather of the National Parks - Shankland	6.20
Wilderness World of John Muir, The - Teale	4.85
Yosemite: The Story of An Idea - Huth35

GEOLOGY AND MAPS

Geologic History of Yosemite Valley (Prof. Paper 160) - Matthes	5.75
Geology of Yosemite Valley, Brief Story of - Beatty25
High Sierra Camp Areas, Pocket Guide to - Clark60
High Sierra Camp Areas, Trail Guide to - Clark	1.15
Incomparable Valley, The - Matthes (paper)	2.15
Map of Sequoia-Kings Canyon NP, Topographic - USGS	1.15
Map of Yosemite National Park, Topographic - USGS60
Map of Yosemite Valley, Topographic, shaded (geology story printed on back)60
North Country of Yosemite, Pocket Guide to - Clark60
North Country of Yosemite, Trail Guide to - Clark	1.15
South Boundary Country, Pocket Guide to - Clark60
South Boundary Country, Trail Guide to - Clark	1.15

FOR CHILDREN

A Day with Tupti, An Indian Boy of the Sierra - Hubbard (paper)	1.20
A Day with Tupti, An Indian Boy of the Sierra - Hubbard (cloth)	3.00
Animal Friends of the Sierra - Hubbard (paper)	1.20
Animal Friends of the Sierra - Hubbard (cloth)	3.00



Digitized by
Yosemite Online Library

<http://www.yosemite.ca.us/library/>

Dan Anderson